

# TABLE OF CONTENTS

## TOPICS

- 1) OBJECTIVE**
- 2) INTRODUCTION ABOUT THE SOFTWARE**
- 3) TECHNOLOGY (TOOLS AND TECHNIQUES)**
- 4) SOFTWARE REQUIREMENT SPECIFICATION**
- 5) DIAGRAMS**
- 6) *E-R DIAGRAM***
- 7) *DATA FLOW DIAGRAMS***
- 8) 0 LEVEL
- 9) 1 LEVEL
- 10) *UML DIAGRAMS***
- 11) CLASS DIAGRAM
- 12) USE-CASE DIAGRAM
- 13) SEQUENCE DIAGRAM
- 14) *DATA DICTIONARY***
- 15) CODING AND FORM DESIGN
- 16) LIMITATIONS
- 17) FUTURE SCOPE
- 18) REFERENCES AND BIBLIOGRAPHY

## **OBJECTIVE**

Our project introduces railway reservation system with an objective to make the reservation system more efficient, easier and fast. This project explores how computer technology can be used to solve the problem of user.

The main objectives provided by this software are as follows:

- We can reserve and cancel their seats
- We can modify the information related to
  - a) Trains
    - 1) Timetable
    - 2) Train Name
    - 3) Train Number
  - b) Ticket Fare

This project is dedicated to model existing railway reservation systems that aim at development of Railway Reservation System that facilitates the railway customer to manage their reservations and the railway administrator to modify the backend database in a user-friendly manner.

# INTRODUCTION

In this emerging world of computers, almost all-manual system has switched to automated and computerized system. Therefore, we are developing the software for “Railway Reservation System” to model the present system and to remove the drawbacks of the present system. This project explores how computer technology can be used to solve the problem of user.

This being a big step in terms of improvement in the railway system it is widely accepted across the country. Rather than designing manually, we have made use of computer. Use of computer has solved many problems, which are faced during manual calculation. Once data are fed, it can perform accurate functions. Therefore, to reduce the complexity and efficiency a versatile and an outsourcing railway reservation system has been developed.

This project introduces railway reservation system. It explains how reservation is being done in Indian Railways. The systematic procedure is explained. This project is developed in C++ language. All most all the header files have been used in this project. Proper comments have been given at desired locations to make the project user friendly. Various functions and structures are used to make a complete use of this language.

The customers are required to register on the server for getting access to the database and query result retrieval. Upon registration, each user has an account that is essentially the ‘view level’ for the customer. The account contains comprehensive information of the user entered during registration and permits the customer to get access to his/her past reservations, enquire about travel fare and availability of seats, make fresh reservations, and update his account details. Each passenger is allotted a unique PNR no. through which one can access his/her account.

The railway administrator is another member involved in the transactions. The administrator is required to login using a master password, once authenticated as an administrator, one has access and right of modification to all the information stored in the database. This includes the account information of the customers, attributes and statistics of stations, description of the train stoppages and physical description of coaches, all the reservations that have been made. The railway administrator has the right to modify any information stored at the server database.

This project is dedicated to model the existing railway reservation system that aims at development of Railway Reservation System that facilitates the railway customer to manage their reservations and the railway administrator to modify the backend database in a user-friendly manner. The customer and the railway administrator are two parties that interact with the database, who have different 'view level schemas' to the database information. The software provides a comprehensive set of features to enhance the operational limits.

Now one can easily plan the journey comfortably as the process is efficient and fast with being easy to access. The efficiency of the railway will increase result of computerization.

## **TECHNOLOGY (TOOLS AND CONTENTS)**

### **Platform Used:**

#### ➤ Hardware Platform:

- System Model : Compaq Presario C700
- Processor : Intel Pentium Dual Core T2370, 1.73 GHz
- RAM : 512 MB
- Hard disk : 160 GB

#### ➤ Software Platform:

- Operating System : Windows XP with Service Pack 3(CHT)
- Compiler : Turbo C++

# SOFTWARE REQUIREMENT SPECIFICATION

A Software Requirement Specification (SRS) is a requirements specification for a software system that is a complete description of the behavior of a system to be developed. It includes a set of use cases that describe all the interactions the users will have with the software. Use cases are also known as functional requirements. In addition to use cases, the SRS also contains non-functional (or supplementary) requirements. Non-functional requirements are requirements that impose constraints on the design or implementation (such as performance engineering requirements, quality standards, or design constraints).

The initial specifications of user requirements may be based on interviews with the database users and on the designers own analysis of the enterprise. The basic issues that the SRS writer(s) shall address are the following:

- Functionality:

What is the software supposed to do?

- External interfaces.

How does the software interact with people, the system's hardware, other hardware, and other software?

- Performance.

What is the speed, availability, response time, recovery time of various software functions, etc.?

- Attributes.

What is the portability, correctness, maintainability, security, etc. considerations?

An SRS should be:

- a) Correct
- b) Unambiguous
- c) Complete
- d) Consistent
- e) Ranked for importance and/or stability
- f) Verifiable
- g) Modifiable
- h) Traceable

## **1. INTRODUCTION:**

### **1.1.PURPOSE:**

The purpose of this software is to describe the Railway Reservation System which provides the rail timing details, reservation, enquiry, billing and cancellation on various types of reservation namely:-

- Confirm reservation for confirm seat
- Reservation against cancellation
- PNR generation

### **1.2.SCOPE:**

The scope of this project is limited to an engineering college. This project aims to maintain passenger and train information.

Other scopes of this project are as follows:

- Freight Revenue enhancement
- Passenger Revenue enhancement
- Improved and optimised service

### **1.3.REFERENCES:**

- [www.scribd.com](http://www.scribd.com)
- [www.irctc.com](http://www.irctc.com)
- [www.indiarail.com](http://www.indiarail.com)
- [www.wikipedia.org](http://www.wikipedia.org)
- E. Balaguruswami
- Sumita Arora
- Shalini Puri
- Pressman

### **1.4.OVERVIEW:**

This project aims at development of a Railway Reservation System that facilitates the Railway customers to manage their reservations and the Railway administrators to modify the backend databases in a User-Friendly manner.

This project includes the following functions:

- 1) Create new database

2) Add new Record

3) Modify

4) Display record

5) Ticket reservation

6) Ticket Modification

7) Ticket Cancellation

8) Ticket printing

## **2. THE OVERALL DESCRIPTION:**

### **2.1.PRODUCT PERSPECTIVE:**

It enables us to maintain the railway train details like their timings, number of seat available, reservation billing and cancelling the tickets.

#### **2.1.1. SYSTEM INTERFACE:**

- Keyboard
- Mouse

#### **2.1.2. HARDWARE INTERFACE:**

- System Model : HP
- Processor : Intel Pentium Dual Core T2370,1.73 GHz
- RAM : 512 MB
- Hard disk : 160 GB

#### **2.1.3. SOFTWARE INTERFACE:**

- Operating System : Windows 7 or above
- Compiler : Vb.net

#### **2.1.4. COMMUNICATION INTERFACE:**

- Indian Railway's website [www.indianrail.gov.in](http://www.indianrail.gov.in) PRS enquires regarding Berth availability, Passenger Status, Fare, Train Schedule etc.
- National Train Enquiry System (NTES) website [www.trainenquiry.com](http://www.trainenquiry.com) gives dynamic information about the running status of any train and its expected arrival/departure at given station.
- Mobile telephone based SMS enquiry service. A new phone based facility for rail users' viz., Country wide extension of Universal Rail Enquiry number "139" through setting up of Interactive Voice Response System (IVRS)

#### **2.1.5. OPERATIONS:**

- Any Reservation counter from 8 am to 8 pm.
- One form for five persons.
- To save time and queue Agents are other guides.

### **2.2.PRODUCT FUNCTIONS:**

It tells the short note about the product.

#### 2.2.1. TRAIN DETAILS:

Customers may view the train number, train name, train timing (arrival and departure), arrival and departure station of the train and number of seats required.

#### 2.2.2. RESERVATION:

After checking the number of seats available, the customers reserve the tickets.

#### 2.2.3. BILLING:

After reserving the required number of tickets, the customer paid the fare.

#### 2.2.4 CANCELLATION:

If the customer wants to cancel the ticket, he can cancel it using PNR number.

### **2.3.USER CHARACTERISTICS:**

- Knowledgeable User
- Novice User
- Expert User

### **2.4.CONSTRAINTS:**

There is no maintainability of back up so availability will get affected. Real-life credit card validation and Banking system is not implemented. No multilingual support. Given below is an overall picture of the system, as depicted in the above

Administrator:

Database Management:

- Control the database customers and keep track of all records of customers.
- Control the database of trains and keep track of all records of train.
- Control fare management.
- View the details of all orders and control the whole application

Customers:

Login:

- Customers must have a valid login id (PNR number) to enter into the site.

#### Registration:

- New users can sign up by creating new ID.

#### Cancel Details

- Can cancel his reservation details.

### **3. SPECIFIC REQUIREMENTS:**

#### **3.1.EXTERNAL INTERFACES:**

- Booking Terminals
- Enquiry Terminals

#### **3.2.PERFORMANCE REQUIREMENTS:**

It's available during all 24 hours.

Variety of compartments based on comfort:

- Standard
- Economy
- First Class

#### **3.3.SOFTWARE SYSTEM ATTRIBUTES:**

- Reliable
- Available
- Secure
- Portable

#### **3.4.FUNCTIONAL REQUIREMENTS:**

In software engineering, a functional requirement defines a function of a software-system or component. A function is described as a set of inputs, the behavior and outputs. Functional requirements may be calculations, technical details, data manipulation and processing and other specific functionality that show how a use case to be fulfilled. Typically, a requirements analyst generates functional requirements after building use cases. However, this may have exceptions since software development is an iterative process and sometime certain requirements are conceived prior to the definition of the use case. Both artifacts (use cases documents and requirements documents) complement each other in a bidirectional process. A typical functional requirement will contain a unique name and number, a brief summary, and a rationale. This information is used to help the reader understand why the requirement is needed, and to track the requirement through the development of the system. The core of the requirement is the description of the required behavior, which must be a clear and readable description of the required behavior. This behavior may come from organizational or business rule, or it may be discovered through

elicitation sessions with users, stakeholders and other experts within the organization.

Software requirements must be clear, correct unambiguous, specific and verifiable.

#### **3.4.1. RESERVATION OF TICKET:**

- **INPUT DETAILS:**  
Clerk asks customer to enter details for the reservation of ticket.
- **CALCULATE FARE:**  
Clerk calculates the total fare of the journey according to the number of passengers and tells the customer.
- **RESERVE TICKET:**  
Ticket is reserved and customer pays the fare.
- **REQUEST TO PRINT:**  
Customer requests to print the ticket.

### **3.5. NON-FUNCTIONAL REQUIREMENTS:**

In systems engineering and requirements engineering, non-functional requirements are requirements that specify criteria that can be used to judge the operation of system, rather than specific behaviors. Non-functional requirements are often called qualities of a system. Other terms for non-functional requirements are “constraints”, “quality attributes”, “quality goals” and “quality of service requirements” .

Qualities, i.e. non-functional requirements can be divided into 2 main categories:

1. Execution qualities such as security and usability are observable at run time.
2. Evolution qualities, such as extensibility and scalability embody in the static structure of the software system.

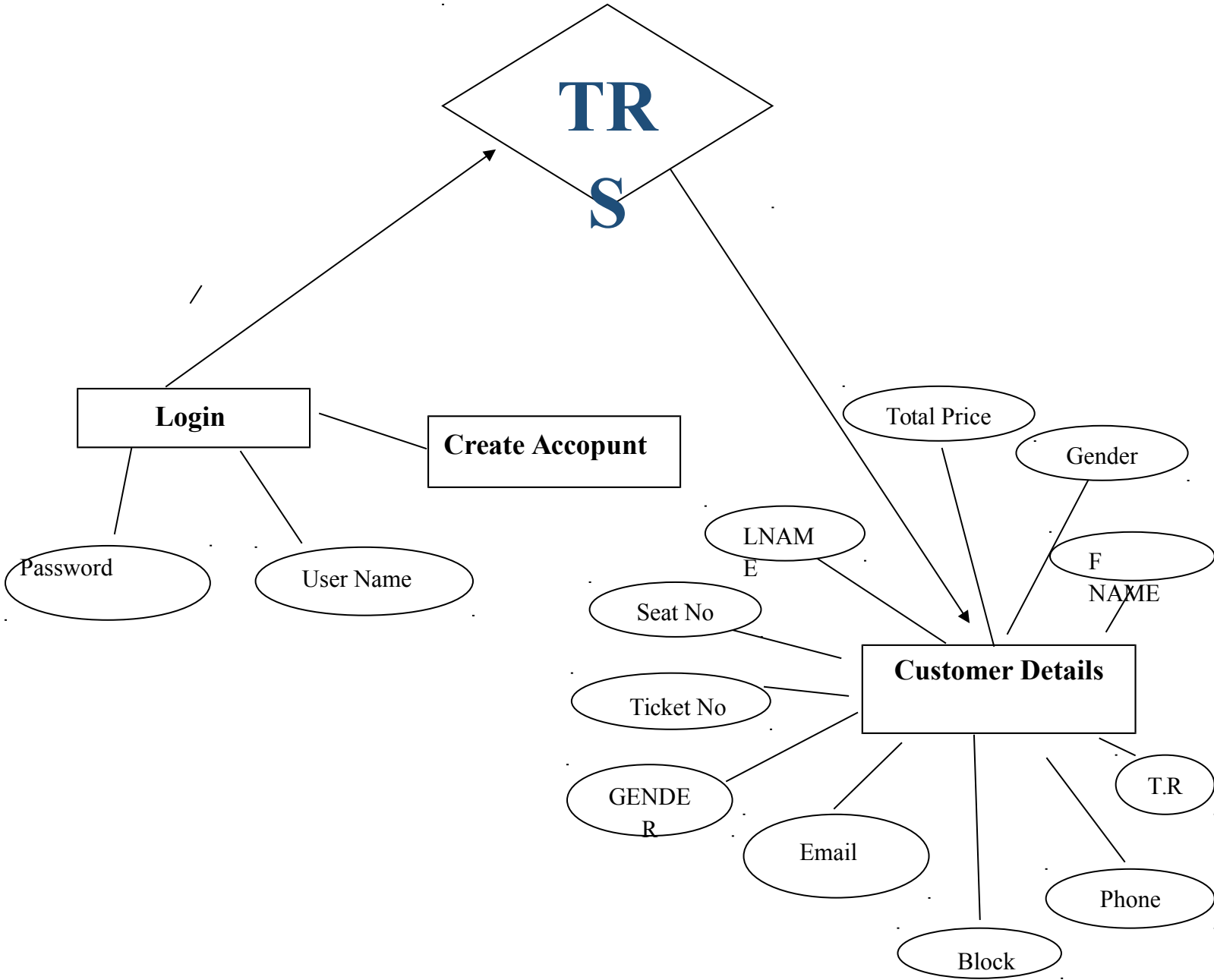
The Non-Functional requirements of our project are:

- **Time:**  
This project should be completed within the stimulated time period.
- **Cost:**  
The cost involved in marketing the project should be less.
- **Usability:**  
This requirement is present, as this system will interact with the user.

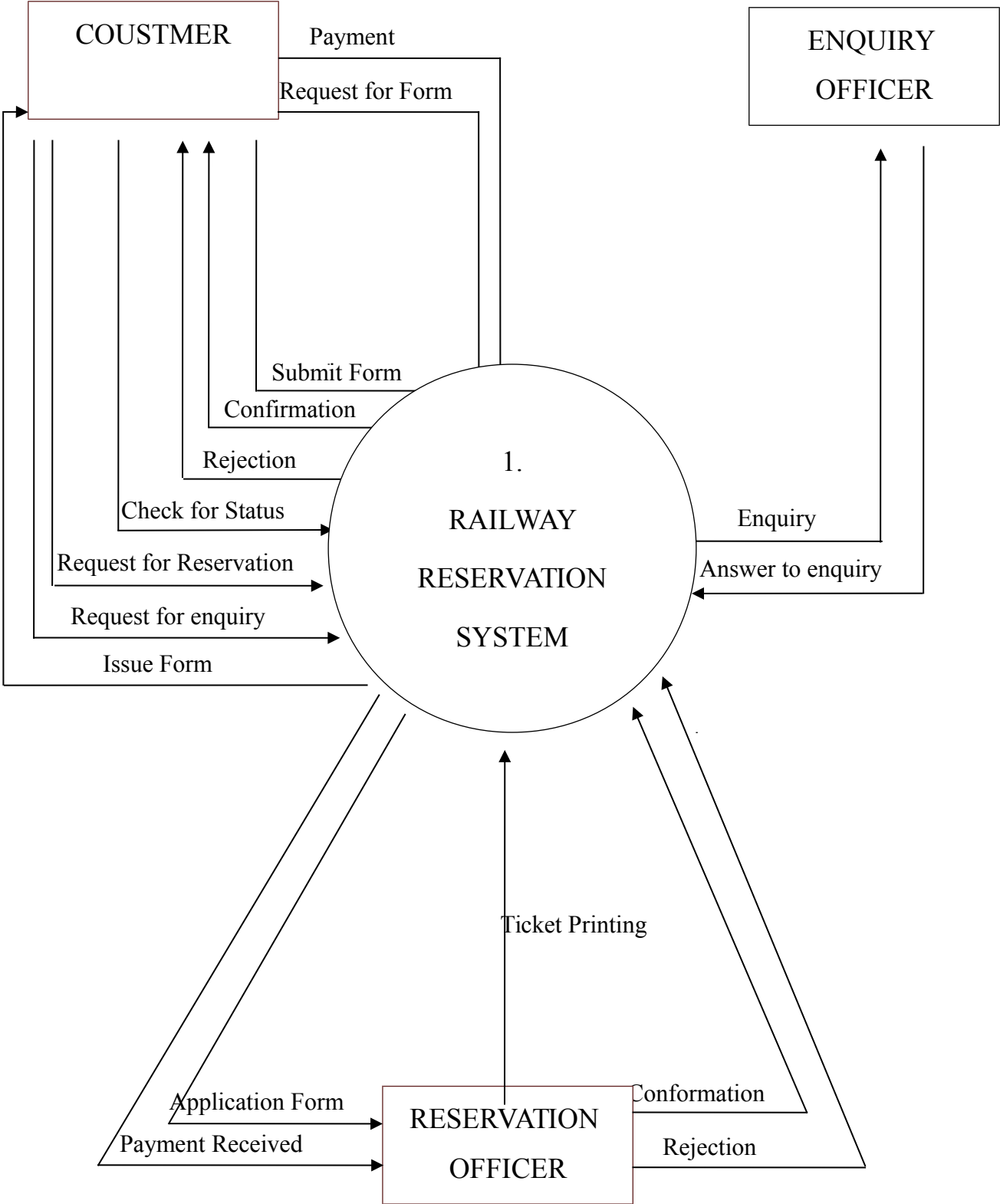
- Reliability:  
This system must be highly robust.
- Performance:  
It should be fast enough to produce output.

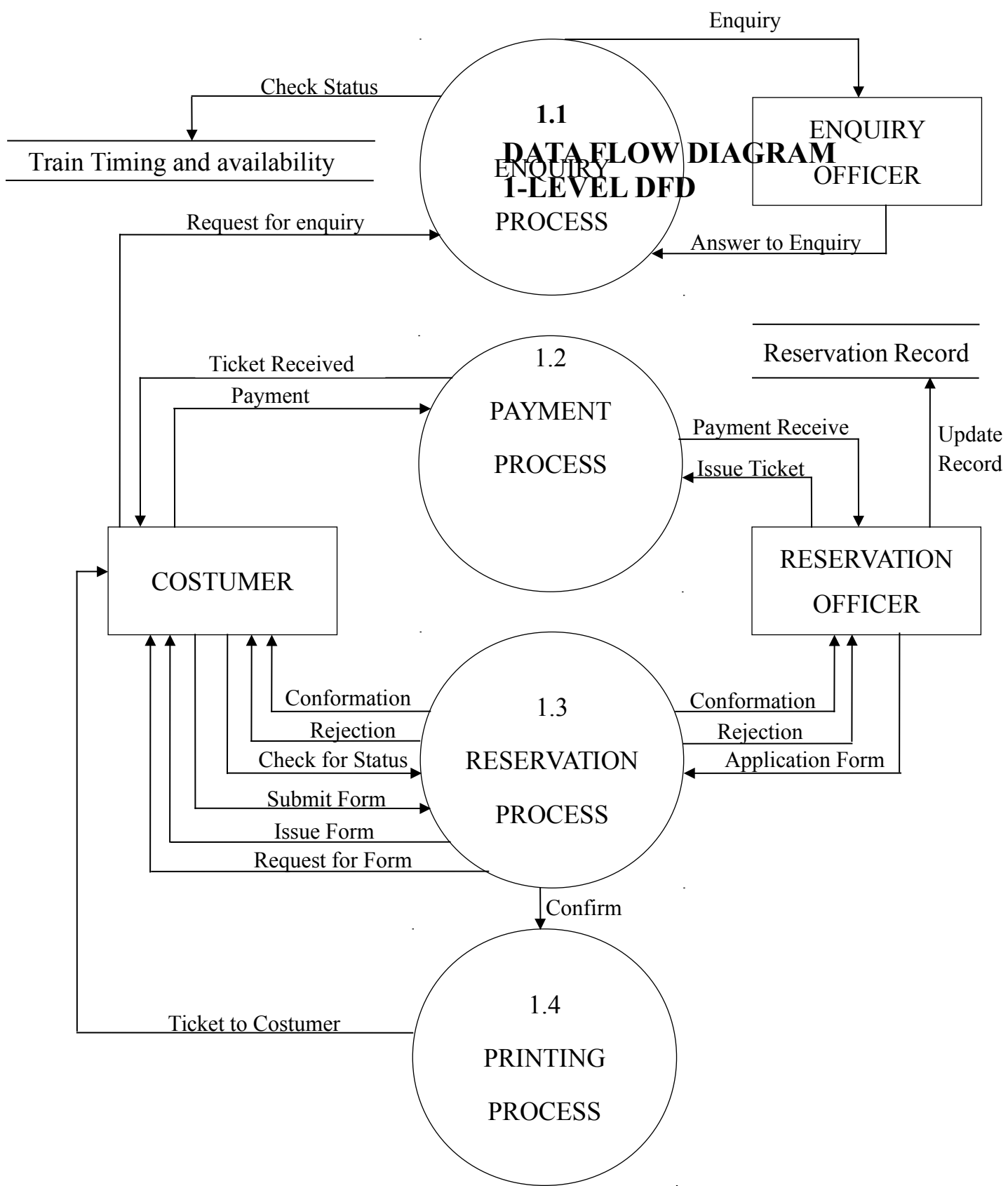


# E-R DIAGRAM



# DATA FLOW DIAGRAM 0-LEVEL DFD





# CODIND AND FORM DESIGN

## Login Form



## Coding:

Public Class Login

```
Private Sub Button1_Click(ByVal sender As System.Object, ByVal e As System.EventArgs) Handles Button1.Click
```

```
    If TextBox1.Text = My.Settings.Username And  
       TextBox2.Text = My.Settings.Password Then  
        tts1.Show()  
        Me.Hide()
```

```
    Else  
        MsgBox("Incoerrect Username or Password!", MsgBoxStyle.Information, "Error")  
    End If
```

```
End Sub
```

```
Private Sub LinkLabel1_LinkClicked(ByVal sender As System.Object, ByVal e As System.Windows.Forms.LinkLabelLinkClickedEventArgs) Handles LinkLabel1.LinkClicked  
    Create_account.Show()
```

```
End Sub
```

```
Private Sub Button2_Click(ByVal sender As System.Object, ByVal e As System.EventArgs) Handles Button2.Click
```

```
    Me.Close()  
End Sub
```

```
Private Sub Login_Load(ByVal sender As System.Object, ByVal e As System.EventArgs) Handles MyBase.Load
```

```
End Sub  
End Class
```

## **Create Account:**



## **Coding:**

```
Public Class Create_account
```

```
Private Sub Button1_Click(ByVal sender As System.Object, ByVal e As System.EventArgs) Handles Button1.Click
```

```
My.Settings.Username = TextBox1.Text  
My.Settings.Password = TextBox2.Text  
My.Settings.Save()  
MsgBox("Create account!", MsgBoxStyle.Information, "Create")  
Me.Hide()  
Login.Show()
```

```
End Sub
```

```
Private Sub Button2_Click(ByVal sender As System.Object, ByVal e As System.EventArgs) Handles Button2.Click
```

```
Me.Hide()  
Login.Show()
```

```
End Sub
```

```
Private Sub Create_account_Load(ByVal sender As System.Object, ByVal e As System.EventArgs) Handles MyBase.Load
```

```
End Sub
```

End Class

## Main Form

**Train Ticketing System**

**Class**

- Standard
- Economy
- First Class

**Ticket Type**

- Single
- Return

**Standard**

**Adult**

- Yes

**Child**

- Yes

**Destination**

**Other Option**

- Use Calculator

**Sub Total**

**Tax**

**Total**

**Travelling Ticket**

Class	Ticket	Adult	Child
Form			
To			
Price			
Ref No.	Time	Date	Route

**Total** **Reset** **Exit** **Next**

Dim operanselected As Boolean = False

```
Const Delhi = 43.9
Const EDelhi = 48.9
Const FDelhi = 64.9
Const Mumbai = 55.23
Const EMumbai = 60.23
Const FMumbai = 65.23
Const Assam = 23.9
Const EAssam = 30
Const FAssam = 40
Const Kolkata = 45
Const EKolkata = 58
Const FKolkata = 69
Const Punjab = 70
Const EPunjab = 78
Const FPunjab = 87
Const Tax = 19.75
Dim TotalCost As Double
```

```
Private Sub GroupBox3_Enter(ByVal sender As System.Object, ByVal e As System.EventArgs) Handles GroupBox3.Enter
```

```
End Sub
```

```
Private Sub Button1_Click(ByVal sender As System.Object, ByVal e As System.EventArgs) Handles bt1.Click
```

```
    If lblDisplay.Text <> "0" Then
```

```
        lblDisplay.Text += "7"
```

```
    Else
```

```
        lblDisplay.Text = "7"
```

```
    End If
```

```
End Sub
```

```
Private Sub Button2_Click(ByVal sender As System.Object, ByVal e As System.EventArgs) Handles bt2.Click
```

```
    If lblDisplay.Text <> "0" Then
```

```
        lblDisplay.Text += "8"
```

```
    Else
```

```
        lblDisplay.Text = "8"
```

```
    End If
```

```
End Sub
```

```
Private Sub Button3_Click(ByVal sender As System.Object, ByVal e As System.EventArgs) Handles bt3.Click
```

```
    If lblDisplay.Text <> "0" Then
```

```
        lblDisplay.Text += "9"
```

```
    Else
```

```
        lblDisplay.Text = "9"
```

```
    End If
```

```
End Sub
```

```
Private Sub Button9_Click(ByVal sender As System.Object, ByVal e As System.EventArgs) Handles bt7.Click
```

```
    If lblDisplay.Text <> "0" Then
```

```
        lblDisplay.Text += "1"
```

```
    Else
```

```
        lblDisplay.Text = "1"
```

```
    End If
```

```
End Sub
```

```
Private Sub Button10_Click(ByVal sender As System.Object, ByVal e As System.EventArgs) Handles bt8.Click
```

```
    If lblDisplay.Text <> "0" Then
```

```
        lblDisplay.Text += "2"
```

```
    Else
```

```
        lblDisplay.Text = "2"
```

```
    End If
```

```
End Sub
```

```
Private Sub Button11_Click(ByVal sender As System.Object, ByVal e As System.EventArgs) Handles bt9.Click
```

```
    If lblDisplay.Text <> "0" Then
```

```
        lblDisplay.Text += "3"
```

```
    Else
```

```
        lblDisplay.Text = "3"
```

```
    End If
```

```
End Sub
```

```
Private Sub Button7_Click(ByVal sender As System.Object, ByVal e As System.EventArgs) Handles  
bt6.Click  
    If lblDisplay.Text <> "0" Then  
        lblDisplay.Text += "4"  
    Else  
        lblDisplay.Text = "4"  
    End If  
End Sub
```

```
Private Sub Button6_Click(ByVal sender As System.Object, ByVal e As System.EventArgs) Handles  
bt5.Click  
    If lblDisplay.Text <> "0" Then  
        lblDisplay.Text += "5"  
    Else  
        lblDisplay.Text = "5"  
    End If  
End Sub
```

```
Private Sub Button5_Click(ByVal sender As System.Object, ByVal e As System.EventArgs) Handles  
bt4.Click  
    If lblDisplay.Text <> "0" Then  
        lblDisplay.Text += "6"  
    Else  
        lblDisplay.Text = "6"  
    End If  
End Sub
```

```
Private Sub Button13_Click(ByVal sender As System.Object, ByVal e As System.EventArgs)  
Handles bt0.Click  
    If lblDisplay.Text <> "0" Then  
        lblDisplay.Text += "0"  
    Else  
        lblDisplay.Text = "0"  
    End If  
End Sub
```

```
Private Sub Button4_Click(ByVal sender As System.Object, ByVal e As System.EventArgs) Handles  
btPlus.Click  
    num1 = lblDisplay.Text  
    lblDisplay.Text = "0"  
    operanselected = True  
    operan = 1  
End Sub
```

```
Private Sub Button8_Click(ByVal sender As System.Object, ByVal e As System.EventArgs) Handles  
btMinus.Click  
    num1 = lblDisplay.Text  
    lblDisplay.Text = "0"  
    operanselected = True  
    operan = 2  
End Sub
```

```
Private Sub Button12_Click(ByVal sender As System.Object, ByVal e As System.EventArgs)  
Handles btMul.Click  
    num1 = lblDisplay.Text  
    lblDisplay.Text = "0"  
    operanselected = True
```

```
operan = 3  
End Sub
```

```
Private Sub Button16_Click(ByVal sender As System.Object, ByVal e As System.EventArgs)  
Handles btDev.Click  
num1 = lblDisplay.Text  
lblDisplay.Text = "0"  
operanselected = True  
operan = 4  
End Sub
```

```
Private Sub Button14_Click(ByVal sender As System.Object, ByVal e As System.EventArgs)  
Handles btMod.Click  
num1 = lblDisplay.Text  
lblDisplay.Text = "0"  
operanselected = True  
operan = 5  
End Sub
```

```
Private Sub Button15_Click(ByVal sender As System.Object, ByVal e As System.EventArgs)  
Handles btDot.Click  
If InStr(lblDisplay.Text, ".") = 0 Then  
lblDisplay.Text = lblDisplay.Text + "."  
  
End If  
End Sub
```

```
Private Sub Button17_Click(ByVal sender As System.Object, ByVal e As System.EventArgs)  
Handles btClear.Click  
lblDisplay.Text = ""  
lblDisplay.Text = "0"  
End Sub
```

```
Private Sub Button18_Click(ByVal sender As System.Object, ByVal e As System.EventArgs)  
Handles btEcu.Click  
If operanselected = True Then  
num2 = lblDisplay.Text  
If operan = 1 Then  
lblDisplay.Text = num1 + num2  
Elseif operan = 2 Then  
lblDisplay.Text = num1 - num2  
Elseif operan = 3 Then  
lblDisplay.Text = num1 * num2  
Elseif operan = 4 Then  
If num2 = "0" Then  
lblDisplay.Text = "Error!"  
Else  
lblDisplay.Text = num1 / num2  
End If  
Elseif operan = 5 Then  
lblDisplay.Text = num1 Mod num2  
  
End If  
operanselected = False  
End If  
End Sub
```

```
Private Sub Button22_Click(ByVal sender As System.Object, ByVal e As System.EventArgs)
Handles Button22.Click
    Application.Exit()

```

End Sub

```
Private Sub Form1_Load(ByVal sender As System.Object, ByVal e As System.EventArgs) Handles
 MyBase.Load

```

```
    ComboBox3.Items.Add("Delhi")
    ComboBox3.Items.Add("Mumbai")
    ComboBox3.Items.Add("Assam")
    ComboBox3.Items.Add("Kolkata")
    ComboBox3.Items.Add("Punjab")

```

```
    bt0.Enabled = False
    bt1.Enabled = False
    bt2.Enabled = False
    bt3.Enabled = False
    bt4.Enabled = False
    bt5.Enabled = False
    bt6.Enabled = False
    bt7.Enabled = False
    bt8.Enabled = False
    bt9.Enabled = False

```

```
    btPlus.Enabled = False
    btMinus.Enabled = False
    btDev.Enabled = False
    btDot.Enabled = False
    btEcu.Enabled = False
    btClear.Enabled = False
    btMod.Enabled = False
    btMul.Enabled = False
    lblDisplay.Enabled = False

```

End Sub

```
Private Sub Button19_Click(ByVal sender As System.Object, ByVal e As System.EventArgs)
Handles Button19.Click

```

```
'=====Delhi=====
'
```

```
'=====Standard=====
'
```

```
    If ComboBox3.Text = "Delhi" And rbStandard1.Checked And rbSingle.Checked And
rbAdult.Checked Then
        lblSubTotal.Text = FormatCurrency(Delhi)
        TotalCost = (Delhi * Tax) / 100
        lblTax.Text = FormatCurrency(TotalCost)
        lblTotal.Text = FormatCurrency(TotalCost + Delhi)
    End If

```

```

lblPrice.Text = lblTotal.Text
lblForm.Text = "Aizawl"
lblTo.Text = ComboBox3.Text
lblClass.Text = rbStandard1.Text
lblTicket.Text = rbSingle.Text
lblAdult.Text = rbAdult.Text
lblRoute.Text = "ANY"
lblDate.Text = Today()
lblTime.Text = TimeOfDay
lblRefNo.Text = (Str(Int(Rnd() * 32654)))
Elseif ComboBox3.Text = "Delhi" And rbStandard1.Checked And rbSingle.Checked And
rbChild.Checked Then
    lblSubTotal.Text = FormatCurrency(Delhi)
    TotalCost = (Delhi * Tax) / 100
    lblTax.Text = FormatCurrency(TotalCost - TotalCost)
    lblTotal.Text = FormatCurrency((TotalCost - TotalCost) + Delhi)
    lblPrice.Text = lblTotal.Text
    lblForm.Text = "Aizawl"
    lblTo.Text = ComboBox3.Text
    lblTo.Text = ComboBox3.Text
    lblClass.Text = rbStandard1.Text
    lblTicket.Text = rbSingle.Text
    lblAdult.Text = rbAdult.Text
    lblRoute.Text = "ANY"
    lblDate.Text = Today()
    lblTime.Text = TimeOfDay
    lblRefNo.Text = (Str(Int(Rnd() * 32654)))
    Elseif ComboBox3.Text = "Delhi" And rbStandard1.Checked And rbReturn.Checked And
rbAdult.Checked Then
        lblSubTotal.Text = FormatCurrency(Delhi)
        TotalCost = (2 * (Delhi * Tax) / 100)
        lblTax.Text = FormatCurrency(TotalCost * 2)
        lblTotal.Text = FormatCurrency(2 * (TotalCost + Delhi))
        lblPrice.Text = lblTotal.Text
        lblForm.Text = "Aizawl"
        lblTo.Text = ComboBox3.Text
        lblTo.Text = ComboBox3.Text
        lblClass.Text = rbStandard1.Text
        lblTicket.Text = rbSingle.Text
        lblAdult.Text = rbAdult.Text
        lblRoute.Text = "ANY"
        lblDate.Text = Today()
        lblTime.Text = TimeOfDay
        lblRefNo.Text = (Str(Int(Rnd() * 32654)))
        Elseif ComboBox3.Text = "Delhi" And rbStandard1.Checked And rbReturn.Checked And
rbChild.Checked Then
            lblSubTotal.Text = FormatCurrency(2 * Delhi)
            TotalCost = (2 * (Delhi * Tax) / 100)
            lblTax.Text = FormatCurrency(TotalCost * 2)
            lblTotal.Text = FormatCurrency((TotalCost - TotalCost) + (2 * Delhi))
            lblPrice.Text = lblTotal.Text
            lblForm.Text = "Aizawl"
            lblTo.Text = ComboBox3.Text
            lblTo.Text = ComboBox3.Text
            lblClass.Text = rbStandard1.Text
            lblTicket.Text = rbSingle.Text
            lblAdult.Text = rbChild.Text
            lblRoute.Text = "ANY"

```

```
    lblDate.Text = Today()
    lblTime.Text = TimeOfDay
    lblRefNo.Text = (Str(Int(Rnd() * 32654)))
End If
```

```
'=====Economy=====
====='
```

```
    If ComboBox3.Text = "Delhi" And rbEconomy.Checked And rbSingle.Checked And
rbAdult.Checked Then
        lblSubTotal.Text = FormatCurrency(EDelhi)
        TotalCost = (EDelhi * Tax) / 100
        lblTax.Text = FormatCurrency(TotalCost)
        lblTotal.Text = FormatCurrency(TotalCost + EDelhi)
        lblPrice.Text = lblTotal.Text
        lblForm.Text = "Aizawl"
        lblTo.Text = ComboBox3.Text
        lblClass.Text = rbStandard1.Text
        lblTicket.Text = rbSingle.Text
        lblAdult.Text = rbAdult.Text
        lblRoute.Text = "ANY"
        lblDate.Text = Today()
        lblTime.Text = TimeOfDay
        lblRefNo.Text = (Str(Int(Rnd() * 32654)))
    ElseIf ComboBox3.Text = "Delhi" And rbEconomy.Checked And rbSingle.Checked And
rbChild.Checked Then
        lblSubTotal.Text = FormatCurrency(EDelhi)
        TotalCost = (Delhi * Tax) / 100
        lblTax.Text = FormatCurrency(TotalCost - TotalCost)
        lblTotal.Text = FormatCurrency((TotalCost - TotalCost) + EDelhi)
        lblPrice.Text = lblTotal.Text
        lblForm.Text = "Aizawl"
        lblTo.Text = ComboBox3.Text
        lblTo.Text = ComboBox3.Text
        lblClass.Text = rbStandard1.Text
        lblTicket.Text = rbSingle.Text
        lblAdult.Text = rbAdult.Text
        lblRoute.Text = "ANY"
        lblDate.Text = Today()
        lblTime.Text = TimeOfDay
        lblRefNo.Text = (Str(Int(Rnd() * 32654)))
    ElseIf ComboBox3.Text = "Delhi" And rbEconomy.Checked And rbReturn.Checked And
rbAdult.Checked Then
        lblSubTotal.Text = FormatCurrency(EDelhi)
        TotalCost = (2 * (EDelhi * Tax) / 100)
        lblTax.Text = FormatCurrency(TotalCost * 2)
        lblTotal.Text = FormatCurrency(2 * (TotalCost + EDelhi))
        lblPrice.Text = lblTotal.Text
        lblForm.Text = "Aizawl"
        lblTo.Text = ComboBox3.Text
        lblTo.Text = ComboBox3.Text
        lblClass.Text = rbStandard1.Text
        lblTicket.Text = rbSingle.Text
        lblAdult.Text = rbAdult.Text
        lblRoute.Text = "ANY"
        lblDate.Text = Today()
        lblTime.Text = TimeOfDay
        lblRefNo.Text = (Str(Int(Rnd() * 32654)))
```

```

Elseif ComboBox3.Text = "Delhi" And rbEconomy.Checked And rbReturn.Checked And
rbChild.Checked Then
    lblSubTotal.Text = FormatCurrency(2 * EDelhi)
    TotalCost = (2 * (EDelhi * Tax) / 100)
    lblTax.Text = FormatCurrency(TotalCost * 2)
    lblTotal.Text = FormatCurrency((TotalCost - TotalCost) + (2 * EDelhi))
    lblPrice.Text = lblTotal.Text
    lblForm.Text = "Aizawl"
    lblTo.Text = ComboBox3.Text
    lblTo.Text = ComboBox3.Text
    lblClass.Text = rbStandard1.Text
    lblTicket.Text = rbSingle.Text
    lblAdult.Text = rbChild.Text
    lblRoute.Text = "ANY"
    lblDate.Text = Today()
    lblTime.Text = TimeOfDay
    lblRefNo.Text = (Str(Int(Rnd() * 32654)))

```

```
End If
```

```
'=====First
```

```
Class====='
```

```
If ComboBox3.Text = "Delhi" And rbFirstClass.Checked And rbSingle.Checked And
rbAdult.Checked Then
```

```

    lblSubTotal.Text = FormatCurrency(FDelhi)
    TotalCost = (FDelhi * Tax) / 100
    lblTax.Text = FormatCurrency(TotalCost)
    lblTotal.Text = FormatCurrency(TotalCost + FDelhi)
    lblPrice.Text = lblTotal.Text
    lblForm.Text = "Aizawl"
    lblTo.Text = ComboBox3.Text
    lblClass.Text = rbStandard1.Text
    lblTicket.Text = rbSingle.Text
    lblAdult.Text = rbAdult.Text
    lblRoute.Text = "ANY"
    lblDate.Text = Today()
    lblTime.Text = TimeOfDay
    lblRefNo.Text = (Str(Int(Rnd() * 32654)))

```

```
Elseif ComboBox3.Text = "Delhi" And rbFirstClass.Checked And rbSingle.Checked And
rbChild.Checked Then
```

```

    lblSubTotal.Text = FormatCurrency(FDelhi)
    TotalCost = (FDelhi * Tax) / 100
    lblTax.Text = FormatCurrency(TotalCost - TotalCost)
    lblTotal.Text = FormatCurrency((TotalCost - TotalCost) + FDelhi)
    lblPrice.Text = lblTotal.Text
    lblForm.Text = "Aizawl"
    lblTo.Text = ComboBox3.Text
    lblTo.Text = ComboBox3.Text
    lblClass.Text = rbStandard1.Text
    lblTicket.Text = rbSingle.Text
    lblAdult.Text = rbAdult.Text
    lblRoute.Text = "ANY"
    lblDate.Text = Today()
    lblTime.Text = TimeOfDay
    lblRefNo.Text = (Str(Int(Rnd() * 32654)))

```

```
Elseif ComboBox3.Text = "Delhi" And rbFirstClass.Checked And rbReturn.Checked And
rbAdult.Checked Then
```

```

    lblSubTotal.Text = FormatCurrency(FDelhi)
    TotalCost = (2 * (FDelhi * Tax) / 100)
    lblTax.Text = FormatCurrency(TotalCost * 2)

```

```

lblTotal.Text = FormatCurrency(2 * (TotalCost + FDelhi))
lblPrice.Text = lblTotal.Text
lblForm.Text = "Aizawl"
lblTo.Text = ComboBox3.Text
lblTo.Text = ComboBox3.Text
lblClass.Text = rbStandard1.Text
lblTicket.Text = rbSingle.Text
lblAdult.Text = rbAdult.Text
lblRoute.Text = "ANY"
lblDate.Text = Today()
lblTime.Text = TimeOfDay
lblRefNo.Text = (Str(Int(Rnd() * 32654)))
Elseif ComboBox3.Text = "Delhi" And rbFirstClass.Checked And rbReturn.Checked And
rbChild.Checked Then
    lblSubTotal.Text = FormatCurrency(2 * FDelhi)
    TotalCost = (2 * (FDelhi * Tax) / 100)
    lblTax.Text = FormatCurrency(TotalCost * 2)
    lblTotal.Text = FormatCurrency((TotalCost - TotalCost) + (2 * FDelhi))
    lblPrice.Text = lblTotal.Text
    lblForm.Text = "Aizawl"
    lblTo.Text = ComboBox3.Text
    lblTo.Text = ComboBox3.Text
    lblClass.Text = rbStandard1.Text
    lblTicket.Text = rbSingle.Text
    lblAdult.Text = rbChild.Text
    lblRoute.Text = "ANY"
    lblDate.Text = Today()
    lblTime.Text = TimeOfDay
    lblRefNo.Text = (Str(Int(Rnd() * 32654)))
End If

```

```

'=====Mumbai=====
'

```

```

'=====Standard=====
'

```

```

If ComboBox3.Text = "Mumbai" And rbStandard1.Checked And rbSingle.Checked And
rbAdult.Checked Then
    lblSubTotal.Text = FormatCurrency(Mumbai)
    TotalCost = (Mumbai * Tax) / 100
    lblTax.Text = FormatCurrency(TotalCost)
    lblTotal.Text = FormatCurrency(TotalCost + Mumbai)
    lblPrice.Text = lblTotal.Text
    lblForm.Text = "Aizawl"
    lblTo.Text = ComboBox3.Text
    lblClass.Text = rbStandard1.Text
    lblTicket.Text = rbSingle.Text
    lblAdult.Text = rbAdult.Text
    lblRoute.Text = "ANY"
    lblDate.Text = Today()
    lblTime.Text = TimeOfDay
    lblRefNo.Text = (Str(Int(Rnd() * 32654)))
Elseif ComboBox3.Text = "Mumbai" And rbStandard1.Checked And rbSingle.Checked And
rbChild.Checked Then
    lblSubTotal.Text = FormatCurrency(Mumbai)
    TotalCost = (Mumbai * Tax) / 100
    lblTax.Text = FormatCurrency(TotalCost - TotalCost)
    lblTotal.Text = FormatCurrency((TotalCost - TotalCost) + Mumbai)

```

```

lblPrice.Text = lblTotal.Text
lblForm.Text = "Aizawl"
lblTo.Text = ComboBox3.Text
lblTo.Text = ComboBox3.Text
lblClass.Text = rbStandard1.Text
lblTicket.Text = rbSingle.Text
lblAdult.Text = rbAdult.Text
lblRoute.Text = "ANY"
lblDate.Text = Today()
lblTime.Text = TimeOfDay
lblRefNo.Text = (Str(Int(Rnd() * 32654)))
Elseif ComboBox3.Text = "Mumbai" And rbStandard1.Checked And rbReturn.Checked And
rbAdult.Checked Then
    lblSubTotal.Text = FormatCurrency(Mumbai)
    TotalCost = (2 * (Mumbai * Tax) / 100)
    lblTax.Text = FormatCurrency(TotalCost * 2)
    lblTotal.Text = FormatCurrency(2 * (TotalCost + Mumbai))
    lblPrice.Text = lblTotal.Text
    lblForm.Text = "Aizawl"
    lblTo.Text = ComboBox3.Text
    lblTo.Text = ComboBox3.Text
    lblClass.Text = rbStandard1.Text
    lblTicket.Text = rbSingle.Text
    lblAdult.Text = rbAdult.Text
    lblRoute.Text = "ANY"
    lblDate.Text = Today()
    lblTime.Text = TimeOfDay
    lblRefNo.Text = (Str(Int(Rnd() * 32654)))
Elseif ComboBox3.Text = "Mumbai" And rbStandard1.Checked And rbReturn.Checked And
rbChild.Checked Then
    lblSubTotal.Text = FormatCurrency(2 * Mumbai)
    TotalCost = (2 * (Mumbai * Tax) / 100)
    lblTax.Text = FormatCurrency(TotalCost * 2)
    lblTotal.Text = FormatCurrency((TotalCost - TotalCost) + (2 * Mumbai))
    lblPrice.Text = lblTotal.Text
    lblForm.Text = "Aizawl"
    lblTo.Text = ComboBox3.Text
    lblTo.Text = ComboBox3.Text
    lblClass.Text = rbStandard1.Text
    lblTicket.Text = rbSingle.Text
    lblAdult.Text = rbChild.Text
    lblRoute.Text = "ANY"
    lblDate.Text = Today()
    lblTime.Text = TimeOfDay
    lblRefNo.Text = (Str(Int(Rnd() * 32654)))
End If

```

```

'=====Economy=====
'

```

```

If ComboBox3.Text = "Mumbai" And rbEconomy.Checked And rbSingle.Checked And
rbAdult.Checked Then
    lblSubTotal.Text = FormatCurrency(EMumbai)
    TotalCost = (EMumbai * Tax) / 100
    lblTax.Text = FormatCurrency(TotalCost)
    lblTotal.Text = FormatCurrency(TotalCost + EMumbai)
    lblPrice.Text = lblTotal.Text
    lblForm.Text = "Aizawl"
    lblTo.Text = ComboBox3.Text

```

```

lblClass.Text = rbStandard1.Text
lblTicket.Text = rbSingle.Text
lblAdult.Text = rbAdult.Text
lblRoute.Text = "ANY"
lblDate.Text = Today()
lblTime.Text = TimeOfDay
lblRefNo.Text = (Str(Int(Rnd() * 32654)))
Elseif ComboBox3.Text = "Mumbai" And rbEconomy.Checked And rbSingle.Checked And
rbChild.Checked Then
    lblSubTotal.Text = FormatCurrency(EMumbai)
    TotalCost = (Mumbai * Tax) / 100
    lblTax.Text = FormatCurrency(TotalCost - TotalCost)
    lblTotal.Text = FormatCurrency((TotalCost - TotalCost) + EMumbai)
    lblPrice.Text = lblTotal.Text
    lblForm.Text = "Aizawl"
    lblTo.Text = ComboBox3.Text
    lblTo.Text = ComboBox3.Text
    lblClass.Text = rbStandard1.Text
    lblTicket.Text = rbSingle.Text
    lblAdult.Text = rbAdult.Text
    lblRoute.Text = "ANY"
    lblDate.Text = Today()
    lblTime.Text = TimeOfDay
    lblRefNo.Text = (Str(Int(Rnd() * 32654)))
Elseif ComboBox3.Text = "Mumbai" And rbEconomy.Checked And rbReturn.Checked And
rbAdult.Checked Then
    lblSubTotal.Text = FormatCurrency(EMumbai)
    TotalCost = (2 * (EMumbai * Tax) / 100)
    lblTax.Text = FormatCurrency(TotalCost * 2)
    lblTotal.Text = FormatCurrency(2 * (TotalCost + EMumbai))
    lblPrice.Text = lblTotal.Text
    lblForm.Text = "Aizawl"
    lblTo.Text = ComboBox3.Text
    lblTo.Text = ComboBox3.Text
    lblClass.Text = rbStandard1.Text
    lblTicket.Text = rbSingle.Text
    lblAdult.Text = rbAdult.Text
    lblRoute.Text = "ANY"
    lblDate.Text = Today()
    lblTime.Text = TimeOfDay
    lblRefNo.Text = (Str(Int(Rnd() * 32654)))
Elseif ComboBox3.Text = "Mumbai" And rbEconomy.Checked And rbReturn.Checked And
rbChild.Checked Then
    lblSubTotal.Text = FormatCurrency(2 * EMumbai)
    TotalCost = (2 * (EMumbai * Tax) / 100)
    lblTax.Text = FormatCurrency(TotalCost * 2)
    lblTotal.Text = FormatCurrency((TotalCost - TotalCost) + (2 * EMumbai))
    lblPrice.Text = lblTotal.Text
    lblForm.Text = "Aizawl"
    lblTo.Text = ComboBox3.Text
    lblTo.Text = ComboBox3.Text
    lblClass.Text = rbStandard1.Text
    lblTicket.Text = rbSingle.Text
    lblAdult.Text = rbChild.Text
    lblRoute.Text = "ANY"
    lblDate.Text = Today()
    lblTime.Text = TimeOfDay
    lblRefNo.Text = (Str(Int(Rnd() * 32654)))

```

```

End If
'=====First
Class=====
If ComboBox3.Text = "Mumbai" And rbFirstClass.Checked And rbSingle.Checked And
rbAdult.Checked Then
    lblSubTotal.Text = FormatCurrency(FMumbai)
    TotalCost = (FMumbai * Tax) / 100
    lblTax.Text = FormatCurrency(TotalCost)
    lblTotal.Text = FormatCurrency(TotalCost + FMumbai)
    lblPrice.Text = lblTotal.Text
    lblForm.Text = "Aizawl"
    lblTo.Text = ComboBox3.Text
    lblClass.Text = rbStandard1.Text
    lblTicket.Text = rbSingle.Text
    lblAdult.Text = rbAdult.Text
    lblRoute.Text = "ANY"
    lblDate.Text = Today()
    lblTime.Text = TimeOfDay
    lblRefNo.Text = (Str(Int(Rnd() * 32654)))
Elseif ComboBox3.Text = "Mumbai" And rbFirstClass.Checked And rbSingle.Checked And
rbChild.Checked Then
    lblSubTotal.Text = FormatCurrency(FMumbai)
    TotalCost = (FMumbai * Tax) / 100
    lblTax.Text = FormatCurrency(TotalCost - TotalCost)
    lblTotal.Text = FormatCurrency((TotalCost - TotalCost) + FMumbai)
    lblPrice.Text = lblTotal.Text
    lblForm.Text = "Aizawl"
    lblTo.Text = ComboBox3.Text
    lblTo.Text = ComboBox3.Text
    lblClass.Text = rbStandard1.Text
    lblTicket.Text = rbSingle.Text
    lblAdult.Text = rbAdult.Text
    lblRoute.Text = "ANY"
    lblDate.Text = Today()
    lblTime.Text = TimeOfDay
    lblRefNo.Text = (Str(Int(Rnd() * 32654)))
Elseif ComboBox3.Text = "Mumbai" And rbFirstClass.Checked And rbReturn.Checked And
rbAdult.Checked Then
    lblSubTotal.Text = FormatCurrency(FMumbai)
    TotalCost = (2 * (FMumbai * Tax) / 100)
    lblTax.Text = FormatCurrency(TotalCost * 2)
    lblTotal.Text = FormatCurrency(2 * (TotalCost + FMumbai))
    lblPrice.Text = lblTotal.Text
    lblForm.Text = "Aizawl"
    lblTo.Text = ComboBox3.Text
    lblTo.Text = ComboBox3.Text
    lblClass.Text = rbStandard1.Text
    lblTicket.Text = rbSingle.Text
    lblAdult.Text = rbAdult.Text
    lblRoute.Text = "ANY"
    lblDate.Text = Today()
    lblTime.Text = TimeOfDay
    lblRefNo.Text = (Str(Int(Rnd() * 32654)))
Elseif ComboBox3.Text = "Mumbai" And rbFirstClass.Checked And rbReturn.Checked And
rbChild.Checked Then
    lblSubTotal.Text = FormatCurrency(2 * FMumbai)
    TotalCost = (2 * (FMumbai * Tax) / 100)
    lblTax.Text = FormatCurrency(TotalCost * 2)

```

```

lblTotal.Text = FormatCurrency((TotalCost - TotalCost) + (2 * FMumbai))
lblPrice.Text = lblTotal.Text
lblForm.Text = "Aizawl"
lblTo.Text = ComboBox3.Text
lblTo.Text = ComboBox3.Text
lblClass.Text = rbStandard1.Text
lblTicket.Text = rbSingle.Text
lblAdult.Text = rbChild.Text
lblRoute.Text = "ANY"
lblDate.Text = Today()
lblTime.Text = TimeOfDay
lblRefNo.Text = (Str(Int(Rnd() * 32654)))
End If

```

```

'=====Assam=====
'
```

```

'=====Standard=====
'
```

```

If ComboBox3.Text = "Assam" And rbStandard1.Checked And rbSingle.Checked And
rbAdult.Checked Then
    lblSubTotal.Text = FormatCurrency(Assam)
    TotalCost = (Assam * Tax) / 100
    lblTax.Text = FormatCurrency(TotalCost)
    lblTotal.Text = FormatCurrency(TotalCost + Assam)
    lblPrice.Text = lblTotal.Text
    lblForm.Text = "Aizawl"
    lblTo.Text = ComboBox3.Text
    lblClass.Text = rbStandard1.Text
    lblTicket.Text = rbSingle.Text
    lblAdult.Text = rbAdult.Text
    lblRoute.Text = "ANY"
    lblDate.Text = Today()
    lblTime.Text = TimeOfDay
    lblRefNo.Text = (Str(Int(Rnd() * 32654)))
Elseif ComboBox3.Text = "Assam" And rbStandard1.Checked And rbSingle.Checked And
rbChild.Checked Then
    lblSubTotal.Text = FormatCurrency(Assam)
    TotalCost = (Assam * Tax) / 100
    lblTax.Text = FormatCurrency(TotalCost - TotalCost)
    lblTotal.Text = FormatCurrency((TotalCost - TotalCost) + Assam)
    lblPrice.Text = lblTotal.Text
    lblForm.Text = "Aizawl"
    lblTo.Text = ComboBox3.Text
    lblTo.Text = ComboBox3.Text
    lblClass.Text = rbStandard1.Text
    lblTicket.Text = rbSingle.Text
    lblAdult.Text = rbAdult.Text
    lblRoute.Text = "ANY"
    lblDate.Text = Today()
    lblTime.Text = TimeOfDay
    lblRefNo.Text = (Str(Int(Rnd() * 32654)))
Elseif ComboBox3.Text = "Assam" And rbStandard1.Checked And rbReturn.Checked And
rbAdult.Checked Then
    lblSubTotal.Text = FormatCurrency(Assam)
    TotalCost = (2 * (Assam * Tax) / 100)
    lblTax.Text = FormatCurrency(TotalCost * 2)
    lblTotal.Text = FormatCurrency(2 * (TotalCost + Assam))

```

```

lblPrice.Text = lblTotal.Text
lblForm.Text = "Aizawl"
lblTo.Text = ComboBox3.Text
lblTo.Text = ComboBox3.Text
lblClass.Text = rbStandard1.Text
lblTicket.Text = rbSingle.Text
lblAdult.Text = rbAdult.Text
lblRoute.Text = "ANY"
lblDate.Text = Today()
lblTime.Text = TimeOfDay
lblRefNo.Text = (Str(Int(Rnd() * 32654)))
Elseif ComboBox3.Text = "Assam" And rbStandard1.Checked And rbReturn.Checked And
rbChild.Checked Then
    lblSubTotal.Text = FormatCurrency(2 * Assam)
    TotalCost = (2 * (Assam * Tax) / 100)
    lblTax.Text = FormatCurrency(TotalCost * 2)
    lblTotal.Text = FormatCurrency((TotalCost - TotalCost) + (2 * Assam))
    lblPrice.Text = lblTotal.Text
    lblForm.Text = "Aizawl"
    lblTo.Text = ComboBox3.Text
    lblTo.Text = ComboBox3.Text
    lblClass.Text = rbStandard1.Text
    lblTicket.Text = rbSingle.Text
    lblAdult.Text = rbChild.Text
    lblRoute.Text = "ANY"
    lblDate.Text = Today()
    lblTime.Text = TimeOfDay
    lblRefNo.Text = (Str(Int(Rnd() * 32654)))
End If

```

```

'=====Economy=====
'=====

```

```

If ComboBox3.Text = "Assam" And rbEconomy.Checked And rbSingle.Checked And
rbAdult.Checked Then
    lblSubTotal.Text = FormatCurrency(EAssam)
    TotalCost = (EAssam * Tax) / 100
    lblTax.Text = FormatCurrency(TotalCost)
    lblTotal.Text = FormatCurrency(TotalCost + EAssam)
    lblPrice.Text = lblTotal.Text
    lblForm.Text = "Aizawl"
    lblTo.Text = ComboBox3.Text
    lblClass.Text = rbStandard1.Text
    lblTicket.Text = rbSingle.Text
    lblAdult.Text = rbAdult.Text
    lblRoute.Text = "ANY"
    lblDate.Text = Today()
    lblTime.Text = TimeOfDay
    lblRefNo.Text = (Str(Int(Rnd() * 32654)))
Elseif ComboBox3.Text = "Assam" And rbEconomy.Checked And rbSingle.Checked And
rbChild.Checked Then
    lblSubTotal.Text = FormatCurrency(EAssam)
    TotalCost = (Assam * Tax) / 100
    lblTax.Text = FormatCurrency(TotalCost - TotalCost)
    lblTotal.Text = FormatCurrency((TotalCost - TotalCost) + EAssam)
    lblPrice.Text = lblTotal.Text
    lblForm.Text = "Aizawl"
    lblTo.Text = ComboBox3.Text
    lblTo.Text = ComboBox3.Text

```

```

    lblClass.Text = rbStandard1.Text
    lblTicket.Text = rbSingle.Text
    lblAdult.Text = rbAdult.Text
    lblRoute.Text = "ANY"
    lblDate.Text = Today()
    lblTime.Text = TimeOfDay
    lblRefNo.Text = (Str(Int(Rnd() * 32654)))
    Elseif ComboBox3.Text = "Assam" And rbEconomy.Checked And rbReturn.Checked And
rbAdult.Checked Then
    lblSubTotal.Text = FormatCurrency(EAssam)
    TotalCost = (2 * (EAssam * Tax) / 100)
    lblTax.Text = FormatCurrency(TotalCost * 2)
    lblTotal.Text = FormatCurrency(2 * (TotalCost + EAssam))
    lblPrice.Text = lblTotal.Text
    lblForm.Text = "Aizawl"
    lblTo.Text = ComboBox3.Text
    lblTo.Text = ComboBox3.Text
    lblClass.Text = rbStandard1.Text
    lblTicket.Text = rbSingle.Text
    lblAdult.Text = rbAdult.Text
    lblRoute.Text = "ANY"
    lblDate.Text = Today()
    lblTime.Text = TimeOfDay
    lblRefNo.Text = (Str(Int(Rnd() * 32654)))
    Elseif ComboBox3.Text = "Assam" And rbEconomy.Checked And rbReturn.Checked And
rbChild.Checked Then
    lblSubTotal.Text = FormatCurrency(2 * EAssam)
    TotalCost = (2 * (EAssam * Tax) / 100)
    lblTax.Text = FormatCurrency(TotalCost * 2)
    lblTotal.Text = FormatCurrency((TotalCost - TotalCost) + (2 * EAssam))
    lblPrice.Text = lblTotal.Text
    lblForm.Text = "Aizawl"
    lblTo.Text = ComboBox3.Text
    lblTo.Text = ComboBox3.Text
    lblClass.Text = rbStandard1.Text
    lblTicket.Text = rbSingle.Text
    lblAdult.Text = rbChild.Text
    lblRoute.Text = "ANY"
    lblDate.Text = Today()
    lblTime.Text = TimeOfDay
    lblRefNo.Text = (Str(Int(Rnd() * 32654)))
End If

```

```

'=====First
Class=====

```

```

    If ComboBox3.Text = "Assam" And rbFirstClass.Checked And rbSingle.Checked And
rbAdult.Checked Then
    lblSubTotal.Text = FormatCurrency(FAssam)
    TotalCost = (FAssam * Tax) / 100
    lblTax.Text = FormatCurrency(TotalCost)
    lblTotal.Text = FormatCurrency(TotalCost + FAssam)
    lblPrice.Text = lblTotal.Text
    lblForm.Text = "Aizawl"
    lblTo.Text = ComboBox3.Text
    lblClass.Text = rbStandard1.Text
    lblTicket.Text = rbSingle.Text
    lblAdult.Text = rbAdult.Text
    lblRoute.Text = "ANY"
    lblDate.Text = Today()

```

```

        lblTime.Text = TimeOfDay
        lblRefNo.Text = (Str(Int(Rnd() * 32654)))
        Elseif ComboBox3.Text = "Assam" And rbFirstClass.Checked And rbSingle.Checked And
rbChild.Checked Then
            lblSubTotal.Text = FormatCurrency(FAssam)
            TotalCost = (FAssam * Tax) / 100
            lblTax.Text = FormatCurrency(TotalCost - TotalCost)
            lblTotal.Text = FormatCurrency((TotalCost - TotalCost) + FAssam)
            lblPrice.Text = lblTotal.Text
            lblForm.Text = "Aizawl"
            lblTo.Text = ComboBox3.Text
            lblTo.Text = ComboBox3.Text
            lblClass.Text = rbStandard1.Text
            lblTicket.Text = rbSingle.Text
            lblAdult.Text = rbAdult.Text
            lblRoute.Text = "ANY"
            lblDate.Text = Today()
            lblTime.Text = TimeOfDay
            lblRefNo.Text = (Str(Int(Rnd() * 32654)))
            Elseif ComboBox3.Text = "Assam" And rbFirstClass.Checked And rbReturn.Checked And
rbAdult.Checked Then
                lblSubTotal.Text = FormatCurrency(FAssam)
                TotalCost = (2 * (FAssam * Tax) / 100)
                lblTax.Text = FormatCurrency(TotalCost * 2)
                lblTotal.Text = FormatCurrency(2 * (TotalCost + FAssam))
                lblPrice.Text = lblTotal.Text
                lblForm.Text = "Aizawl"
                lblTo.Text = ComboBox3.Text
                lblTo.Text = ComboBox3.Text
                lblClass.Text = rbStandard1.Text
                lblTicket.Text = rbSingle.Text
                lblAdult.Text = rbAdult.Text
                lblRoute.Text = "ANY"
                lblDate.Text = Today()
                lblTime.Text = TimeOfDay
                lblRefNo.Text = (Str(Int(Rnd() * 32654)))
                Elseif ComboBox3.Text = "Assam" And rbFirstClass.Checked And rbReturn.Checked And
rbChild.Checked Then
                    lblSubTotal.Text = FormatCurrency(2 * FAssam)
                    TotalCost = (2 * (FAssam * Tax) / 100)
                    lblTax.Text = FormatCurrency(TotalCost * 2)
                    lblTotal.Text = FormatCurrency((TotalCost - TotalCost) + (2 * FAssam))
                    lblPrice.Text = lblTotal.Text
                    lblForm.Text = "Aizawl"
                    lblTo.Text = ComboBox3.Text
                    lblTo.Text = ComboBox3.Text
                    lblClass.Text = rbStandard1.Text
                    lblTicket.Text = rbSingle.Text
                    lblAdult.Text = rbChild.Text
                    lblRoute.Text = "ANY"
                    lblDate.Text = Today()
                    lblTime.Text = TimeOfDay
                    lblRefNo.Text = (Str(Int(Rnd() * 32654)))
                End If
            End If

```

```

'=====Kolkata=====
'

```

'=====Standard====='

```
If ComboBox3.Text = "Kolkata" And rbStandard1.Checked And rbSingle.Checked And
rbAdult.Checked Then
    lblSubTotal.Text = FormatCurrency(Kolkata)
    TotalCost = (Kolkata * Tax) / 100
    lblTax.Text = FormatCurrency(TotalCost)
    lblTotal.Text = FormatCurrency(TotalCost + Kolkata)
    lblPrice.Text = lblTotal.Text
    lblForm.Text = "Aizawl"
    lblTo.Text = ComboBox3.Text
    lblClass.Text = rbStandard1.Text
    lblTicket.Text = rbSingle.Text
    lblAdult.Text = rbAdult.Text
    lblRoute.Text = "ANY"
    lblDate.Text = Today()
    lblTime.Text = TimeOfDay
    lblRefNo.Text = (Str(Int(Rnd() * 32654)))
Elseif ComboBox3.Text = "Kolkata" And rbStandard1.Checked And rbSingle.Checked And
rbChild.Checked Then
    lblSubTotal.Text = FormatCurrency(Kolkata)
    TotalCost = (Kolkata * Tax) / 100
    lblTax.Text = FormatCurrency(TotalCost - TotalCost)
    lblTotal.Text = FormatCurrency((TotalCost - TotalCost) + Kolkata)
    lblPrice.Text = lblTotal.Text
    lblForm.Text = "Aizawl"
    lblTo.Text = ComboBox3.Text
    lblTo.Text = ComboBox3.Text
    lblClass.Text = rbStandard1.Text
    lblTicket.Text = rbSingle.Text
    lblAdult.Text = rbAdult.Text
    lblRoute.Text = "ANY"
    lblDate.Text = Today()
    lblTime.Text = TimeOfDay
    lblRefNo.Text = (Str(Int(Rnd() * 32654)))
Elseif ComboBox3.Text = "Kolkata" And rbStandard1.Checked And rbReturn.Checked And
rbAdult.Checked Then
    lblSubTotal.Text = FormatCurrency(Kolkata)
    TotalCost = (2 * (Kolkata * Tax) / 100)
    lblTax.Text = FormatCurrency(TotalCost * 2)
    lblTotal.Text = FormatCurrency(2 * (TotalCost + Kolkata))
    lblPrice.Text = lblTotal.Text
    lblForm.Text = "Aizawl"
    lblTo.Text = ComboBox3.Text
    lblTo.Text = ComboBox3.Text
    lblClass.Text = rbStandard1.Text
    lblTicket.Text = rbSingle.Text
    lblAdult.Text = rbAdult.Text
    lblRoute.Text = "ANY"
    lblDate.Text = Today()
    lblTime.Text = TimeOfDay
    lblRefNo.Text = (Str(Int(Rnd() * 32654)))
Elseif ComboBox3.Text = "Kolkata" And rbStandard1.Checked And rbReturn.Checked And
rbChild.Checked Then
    lblSubTotal.Text = FormatCurrency(2 * Kolkata)
    TotalCost = (2 * (Kolkata * Tax) / 100)
    lblTax.Text = FormatCurrency(TotalCost * 2)
```

```

lblTotal.Text = FormatCurrency((TotalCost - TotalCost) + (2 * Kolkata))
lblPrice.Text = lblTotal.Text
lblForm.Text = "Aizawl"
lblTo.Text = ComboBox3.Text
lblTo.Text = ComboBox3.Text
lblClass.Text = rbStandard1.Text
lblTicket.Text = rbSingle.Text
lblAdult.Text = rbChild.Text
lblRoute.Text = "ANY"
lblDate.Text = Today()
lblTime.Text = TimeOfDay
lblRefNo.Text = (Str(Int(Rnd() * 32654)))
End If

```

```

'=====Economy=====
'
```

```

If ComboBox3.Text = "Kolkata" And rbEconomy.Checked And rbSingle.Checked And
rbAdult.Checked Then
    lblSubTotal.Text = FormatCurrency(EKolkata)
    TotalCost = (EKolkata * Tax) / 100
    lblTax.Text = FormatCurrency(TotalCost)
    lblTotal.Text = FormatCurrency(TotalCost + EKolkata)
    lblPrice.Text = lblTotal.Text
    lblForm.Text = "Aizawl"
    lblTo.Text = ComboBox3.Text
    lblClass.Text = rbStandard1.Text
    lblTicket.Text = rbSingle.Text
    lblAdult.Text = rbAdult.Text
    lblRoute.Text = "ANY"
    lblDate.Text = Today()
    lblTime.Text = TimeOfDay
    lblRefNo.Text = (Str(Int(Rnd() * 32654)))
Elseif ComboBox3.Text = "Kolkata" And rbEconomy.Checked And rbSingle.Checked And
rbChild.Checked Then
    lblSubTotal.Text = FormatCurrency(EKolkata)
    TotalCost = (Kolkata * Tax) / 100
    lblTax.Text = FormatCurrency(TotalCost - TotalCost)
    lblTotal.Text = FormatCurrency((TotalCost - TotalCost) + EKolkata)
    lblPrice.Text = lblTotal.Text
    lblForm.Text = "Aizawl"
    lblTo.Text = ComboBox3.Text
    lblTo.Text = ComboBox3.Text
    lblClass.Text = rbStandard1.Text
    lblTicket.Text = rbSingle.Text
    lblAdult.Text = rbAdult.Text
    lblRoute.Text = "ANY"
    lblDate.Text = Today()
    lblTime.Text = TimeOfDay
    lblRefNo.Text = (Str(Int(Rnd() * 32654)))
Elseif ComboBox3.Text = "Kolkata" And rbEconomy.Checked And rbReturn.Checked And
rbAdult.Checked Then
    lblSubTotal.Text = FormatCurrency(EKolkata)
    TotalCost = (2 * (EKolkata * Tax) / 100)
    lblTax.Text = FormatCurrency(TotalCost * 2)
    lblTotal.Text = FormatCurrency(2 * (TotalCost + EKolkata))
    lblPrice.Text = lblTotal.Text
    lblForm.Text = "Aizawl"
    lblTo.Text = ComboBox3.Text

```

```

    lblTo.Text = ComboBox3.Text
    lblClass.Text = rbStandard1.Text
    lblTicket.Text = rbSingle.Text
    lblAdult.Text = rbAdult.Text
    lblRoute.Text = "ANY"
    lblDate.Text = Today()
    lblTime.Text = TimeOfDay
    lblRefNo.Text = (Str(Int(Rnd() * 32654)))
Elseif ComboBox3.Text = "Kolkata" And rbEconomy.Checked And rbReturn.Checked And
rbChild.Checked Then
    lblSubTotal.Text = FormatCurrency(2 * EKolkata)
    TotalCost = (2 * (EKolkata * Tax) / 100)
    lblTax.Text = FormatCurrency(TotalCost * 2)
    lblTotal.Text = FormatCurrency((TotalCost - TotalCost) + (2 * EKolkata))
    lblPrice.Text = lblTotal.Text
    lblForm.Text = "Aizawl"
    lblTo.Text = ComboBox3.Text
    lblTo.Text = ComboBox3.Text
    lblClass.Text = rbStandard1.Text
    lblTicket.Text = rbSingle.Text
    lblAdult.Text = rbChild.Text
    lblRoute.Text = "ANY"
    lblDate.Text = Today()
    lblTime.Text = TimeOfDay
    lblRefNo.Text = (Str(Int(Rnd() * 32654)))
End If
'=====First
Class=====
If ComboBox3.Text = "Kolkata" And rbFirstClass.Checked And rbSingle.Checked And
rbAdult.Checked Then
    lblSubTotal.Text = FormatCurrency(FKolkata)
    TotalCost = (FKolkata * Tax) / 100
    lblTax.Text = FormatCurrency(TotalCost)
    lblTotal.Text = FormatCurrency(TotalCost + FKolkata)
    lblPrice.Text = lblTotal.Text
    lblForm.Text = "Aizawl"
    lblTo.Text = ComboBox3.Text
    lblClass.Text = rbStandard1.Text
    lblTicket.Text = rbSingle.Text
    lblAdult.Text = rbAdult.Text
    lblRoute.Text = "ANY"
    lblDate.Text = Today()
    lblTime.Text = TimeOfDay
    lblRefNo.Text = (Str(Int(Rnd() * 32654)))
Elseif ComboBox3.Text = "Kolkata" And rbFirstClass.Checked And rbSingle.Checked And
rbChild.Checked Then
    lblSubTotal.Text = FormatCurrency(FKolkata)
    TotalCost = (FKolkata * Tax) / 100
    lblTax.Text = FormatCurrency(TotalCost - TotalCost)
    lblTotal.Text = FormatCurrency((TotalCost - TotalCost) + FKolkata)
    lblPrice.Text = lblTotal.Text
    lblForm.Text = "Aizawl"
    lblTo.Text = ComboBox3.Text
    lblTo.Text = ComboBox3.Text
    lblClass.Text = rbStandard1.Text
    lblTicket.Text = rbSingle.Text
    lblAdult.Text = rbAdult.Text
    lblRoute.Text = "ANY"

```

```

        lblDate.Text = Today()
        lblTime.Text = TimeOfDay
        lblRefNo.Text = (Str(Int(Rnd() * 32654)))
        Elseif ComboBox3.Text = "Kolkata" And rbFirstClass.Checked And rbReturn.Checked And
rbAdult.Checked Then
        lblSubTotal.Text = FormatCurrency(FKolkata)
        TotalCost = (2 * (FKolkata * Tax) / 100)
        lblTax.Text = FormatCurrency(TotalCost * 2)
        lblTotal.Text = FormatCurrency(2 * (TotalCost + FKolkata))
        lblPrice.Text = lblTotal.Text
        lblForm.Text = "Aizawl"
        lblTo.Text = ComboBox3.Text
        lblTo.Text = ComboBox3.Text
        lblClass.Text = rbStandard1.Text
        lblTicket.Text = rbSingle.Text
        lblAdult.Text = rbAdult.Text
        lblRoute.Text = "ANY"
        lblDate.Text = Today()
        lblTime.Text = TimeOfDay
        lblRefNo.Text = (Str(Int(Rnd() * 32654)))
        Elseif ComboBox3.Text = "Kolkata" And rbFirstClass.Checked And rbReturn.Checked And
rbChild.Checked Then
        lblSubTotal.Text = FormatCurrency(2 * FKolkata)
        TotalCost = (2 * (FKolkata * Tax) / 100)
        lblTax.Text = FormatCurrency(TotalCost * 2)
        lblTotal.Text = FormatCurrency((TotalCost - TotalCost) + (2 * FKolkata))
        lblPrice.Text = lblTotal.Text
        lblForm.Text = "Aizawl"
        lblTo.Text = ComboBox3.Text
        lblTo.Text = ComboBox3.Text
        lblClass.Text = rbStandard1.Text
        lblTicket.Text = rbSingle.Text
        lblAdult.Text = rbChild.Text
        lblRoute.Text = "ANY"
        lblDate.Text = Today()
        lblTime.Text = TimeOfDay
        lblRefNo.Text = (Str(Int(Rnd() * 32654)))
    End If

```

```

'=====Punjab=====
'

```

```

'=====Standard=====
'

```

```

        If ComboBox3.Text = "Punjab" And rbStandard1.Checked And rbSingle.Checked And
rbAdult.Checked Then
        lblSubTotal.Text = FormatCurrency(Punjab)
        TotalCost = (Punjab * Tax) / 100
        lblTax.Text = FormatCurrency(TotalCost)
        lblTotal.Text = FormatCurrency(TotalCost + Punjab)
        lblPrice.Text = lblTotal.Text
        lblForm.Text = "Aizawl"
        lblTo.Text = ComboBox3.Text
        lblClass.Text = rbStandard1.Text
        lblTicket.Text = rbSingle.Text
        lblAdult.Text = rbAdult.Text
        lblRoute.Text = "ANY"
        lblDate.Text = Today()

```

```

        lblTime.Text = TimeOfDay
        lblRefNo.Text = (Str(Int(Rnd() * 32654)))
        Elseif ComboBox3.Text = "Punjab" And rbStandard1.Checked And rbSingle.Checked And
rbChild.Checked Then
            lblSubTotal.Text = FormatCurrency(Punjab)
            TotalCost = (Punjab * Tax) / 100
            lblTax.Text = FormatCurrency(TotalCost - TotalCost)
            lblTotal.Text = FormatCurrency((TotalCost - TotalCost) + Punjab)
            lblPrice.Text = lblTotal.Text
            lblForm.Text = "Aizawl"
            lblTo.Text = ComboBox3.Text
            lblTo.Text = ComboBox3.Text
            lblClass.Text = rbStandard1.Text
            lblTicket.Text = rbSingle.Text
            lblAdult.Text = rbAdult.Text
            lblRoute.Text = "ANY"
            lblDate.Text = Today()
            lblTime.Text = TimeOfDay
            lblRefNo.Text = (Str(Int(Rnd() * 32654)))
            Elseif ComboBox3.Text = "Punjab" And rbStandard1.Checked And rbReturn.Checked And
rbAdult.Checked Then
                lblSubTotal.Text = FormatCurrency(Punjab)
                TotalCost = (2 * (Punjab * Tax) / 100)
                lblTax.Text = FormatCurrency(TotalCost * 2)
                lblTotal.Text = FormatCurrency(2 * (TotalCost + Punjab))
                lblPrice.Text = lblTotal.Text
                lblForm.Text = "Aizawl"
                lblTo.Text = ComboBox3.Text
                lblTo.Text = ComboBox3.Text
                lblClass.Text = rbStandard1.Text
                lblTicket.Text = rbSingle.Text
                lblAdult.Text = rbAdult.Text
                lblRoute.Text = "ANY"
                lblDate.Text = Today()
                lblTime.Text = TimeOfDay
                lblRefNo.Text = (Str(Int(Rnd() * 32654)))
                Elseif ComboBox3.Text = "Punjab" And rbStandard1.Checked And rbReturn.Checked And
rbChild.Checked Then
                    lblSubTotal.Text = FormatCurrency(2 * Punjab)
                    TotalCost = (2 * (Punjab * Tax) / 100)
                    lblTax.Text = FormatCurrency(TotalCost * 2)
                    lblTotal.Text = FormatCurrency((TotalCost - TotalCost) + (2 * Punjab))
                    lblPrice.Text = lblTotal.Text
                    lblForm.Text = "Aizawl"
                    lblTo.Text = ComboBox3.Text
                    lblTo.Text = ComboBox3.Text
                    lblClass.Text = rbStandard1.Text
                    lblTicket.Text = rbSingle.Text
                    lblAdult.Text = rbChild.Text
                    lblRoute.Text = "ANY"
                    lblDate.Text = Today()
                    lblTime.Text = TimeOfDay
                    lblRefNo.Text = (Str(Int(Rnd() * 32654)))
                End If

```

```

'=====Economy=====
'

```

```

If ComboBox3.Text = "Punjab" And rbEconomy.Checked And rbSingle.Checked And
rbAdult.Checked Then
    lblSubTotal.Text = FormatCurrency(EPunjab)
    TotalCost = (EPunjab * Tax) / 100
    lblTax.Text = FormatCurrency(TotalCost)
    lblTotal.Text = FormatCurrency(TotalCost + EPunjab)
    lblPrice.Text = lblTotal.Text
    lblForm.Text = "Aizawl"
    lblTo.Text = ComboBox3.Text
    lblClass.Text = rbStandard1.Text
    lblTicket.Text = rbSingle.Text
    lblAdult.Text = rbAdult.Text
    lblRoute.Text = "ANY"
    lblDate.Text = Today()
    lblTime.Text = TimeOfDay
    lblRefNo.Text = (Str(Int(Rnd() * 32654)))
Elseif ComboBox3.Text = "Punjab" And rbEconomy.Checked And rbSingle.Checked And
rbChild.Checked Then
    lblSubTotal.Text = FormatCurrency(EPunjab)
    TotalCost = (Punjab * Tax) / 100
    lblTax.Text = FormatCurrency(TotalCost - TotalCost)
    lblTotal.Text = FormatCurrency((TotalCost - TotalCost) + EPunjab)
    lblPrice.Text = lblTotal.Text
    lblForm.Text = "Aizawl"
    lblTo.Text = ComboBox3.Text
    lblTo.Text = ComboBox3.Text
    lblClass.Text = rbStandard1.Text
    lblTicket.Text = rbSingle.Text
    lblAdult.Text = rbAdult.Text
    lblRoute.Text = "ANY"
    lblDate.Text = Today()
    lblTime.Text = TimeOfDay
    lblRefNo.Text = (Str(Int(Rnd() * 32654)))
Elseif ComboBox3.Text = "Punjab" And rbEconomy.Checked And rbReturn.Checked And
rbAdult.Checked Then
    lblSubTotal.Text = FormatCurrency(EPunjab)
    TotalCost = (2 * (EPunjab * Tax) / 100)
    lblTax.Text = FormatCurrency(TotalCost * 2)
    lblTotal.Text = FormatCurrency(2 * (TotalCost + EPunjab))
    lblPrice.Text = lblTotal.Text
    lblForm.Text = "Aizawl"
    lblTo.Text = ComboBox3.Text
    lblTo.Text = ComboBox3.Text
    lblClass.Text = rbStandard1.Text
    lblTicket.Text = rbSingle.Text
    lblAdult.Text = rbAdult.Text
    lblRoute.Text = "ANY"
    lblDate.Text = Today()
    lblTime.Text = TimeOfDay
    lblRefNo.Text = (Str(Int(Rnd() * 32654)))
Elseif ComboBox3.Text = "Punjab" And rbEconomy.Checked And rbReturn.Checked And
rbChild.Checked Then
    lblSubTotal.Text = FormatCurrency(2 * EPunjab)
    TotalCost = (2 * (EPunjab * Tax) / 100)
    lblTax.Text = FormatCurrency(TotalCost * 2)
    lblTotal.Text = FormatCurrency((TotalCost - TotalCost) + (2 * EPunjab))
    lblPrice.Text = lblTotal.Text
    lblForm.Text = "Aizawl"

```

```

    lblTo.Text = ComboBox3.Text
    lblTo.Text = ComboBox3.Text
    lblClass.Text = rbStandard1.Text
    lblTicket.Text = rbSingle.Text
    lblAdult.Text = rbChild.Text
    lblRoute.Text = "ANY"
    lblDate.Text = Today()
    lblTime.Text = TimeOfDay
    lblRefNo.Text = (Str(Int(Rnd() * 32654)))
End If
'=====First
Class=====
If ComboBox3.Text = "Punjab" And rbFirstClass.Checked And rbSingle.Checked And
rbAdult.Checked Then
    lblSubTotal.Text = FormatCurrency(FPunjab)
    TotalCost = (FPunjab * Tax) / 100
    lblTax.Text = FormatCurrency(TotalCost)
    lblTotal.Text = FormatCurrency(TotalCost + FPunjab)
    lblPrice.Text = lblTotal.Text
    lblForm.Text = "Aizawl"
    lblTo.Text = ComboBox3.Text
    lblClass.Text = rbStandard1.Text
    lblTicket.Text = rbSingle.Text
    lblAdult.Text = rbAdult.Text
    lblRoute.Text = "ANY"
    lblDate.Text = Today()
    lblTime.Text = TimeOfDay
    lblRefNo.Text = (Str(Int(Rnd() * 32654)))
Elseif ComboBox3.Text = "Punjab" And rbFirstClass.Checked And rbSingle.Checked And
rbChild.Checked Then
    lblSubTotal.Text = FormatCurrency(FPunjab)
    TotalCost = (FPunjab * Tax) / 100
    lblTax.Text = FormatCurrency(TotalCost - TotalCost)
    lblTotal.Text = FormatCurrency((TotalCost - TotalCost) + FPunjab)
    lblPrice.Text = lblTotal.Text
    lblForm.Text = "Aizawl"
    lblTo.Text = ComboBox3.Text
    lblTo.Text = ComboBox3.Text
    lblClass.Text = rbStandard1.Text
    lblTicket.Text = rbSingle.Text
    lblAdult.Text = rbAdult.Text
    lblRoute.Text = "ANY"
    lblDate.Text = Today()
    lblTime.Text = TimeOfDay
    lblRefNo.Text = (Str(Int(Rnd() * 32654)))
Elseif ComboBox3.Text = "Punjab" And rbFirstClass.Checked And rbReturn.Checked And
rbAdult.Checked Then
    lblSubTotal.Text = FormatCurrency(FPunjab)
    TotalCost = (2 * (FPunjab * Tax) / 100)
    lblTax.Text = FormatCurrency(TotalCost * 2)
    lblTotal.Text = FormatCurrency(2 * (TotalCost + FPunjab))
    lblPrice.Text = lblTotal.Text
    lblForm.Text = "Aizawl"
    lblTo.Text = ComboBox3.Text
    lblTo.Text = ComboBox3.Text
    lblClass.Text = rbStandard1.Text
    lblTicket.Text = rbSingle.Text
    lblAdult.Text = rbAdult.Text

```

```

    lblRoute.Text = "ANY"
    lblDate.Text = Today()
    lblTime.Text = TimeOfDay
    lblRefNo.Text = (Str(Int(Rnd() * 32654)))
    Elseif ComboBox3.Text = "Punjab" And rbFirstClass.Checked And rbReturn.Checked And
rbChild.Checked Then
    lblSubTotal.Text = FormatCurrency(2 * FPunjab)
    TotalCost = (2 * (FPunjab * Tax) / 100)
    lblTax.Text = FormatCurrency(TotalCost * 2)
    lblTotal.Text = FormatCurrency((TotalCost - TotalCost) + (2 * FPunjab))
    lblPrice.Text = lblTotal.Text
    lblForm.Text = "Aizawl"
    lblTo.Text = ComboBox3.Text
    lblTo.Text = ComboBox3.Text
    lblClass.Text = rbStandard1.Text
    lblTicket.Text = rbSingle.Text
    lblAdult.Text = rbChild.Text
    lblRoute.Text = "ANY"
    lblDate.Text = Today()
    lblTime.Text = TimeOfDay
    lblRefNo.Text = (Str(Int(Rnd() * 32654)))
End If
End Sub

```

```

Private Sub CheckBox1_CheckedChanged(ByVal sender As System.Object, ByVal e As
System.EventArgs) Handles CheckBox1.CheckedChanged

```

```

    If CheckBox1.Checked = True Then

```

```

        bt0.Enabled = True
        bt1.Enabled = True
        bt2.Enabled = True
        bt3.Enabled = True
        bt4.Enabled = True
        bt5.Enabled = True
        bt6.Enabled = True
        bt7.Enabled = True
        bt8.Enabled = True
        bt9.Enabled = True

```

```

        btPlus.Enabled = True
        btMinus.Enabled = True
        btDev.Enabled = True
        btDot.Enabled = True
        btEcu.Enabled = True
        btClear.Enabled = True
        btMod.Enabled = True
        btMul.Enabled = True
        lblDisplay.Enabled = True

```

```

    Elseif CheckBox1.Checked = False Then

```

```

        bt0.Enabled = False
        bt1.Enabled = False
        bt2.Enabled = False
        bt3.Enabled = False
        bt4.Enabled = False
        bt5.Enabled = False
        bt6.Enabled = False
        bt7.Enabled = False
        bt8.Enabled = False
        bt9.Enabled = False

```

```

    btPlus.Enabled = False
    btMinus.Enabled = False
    btDev.Enabled = False
    btDot.Enabled = False
    btEcu.Enabled = False
    btClear.Enabled = False
    btMod.Enabled = False
    btMul.Enabled = False
    lblDisplay.Enabled = False
End If
End Sub

Private Sub RadioButton8_CheckedChanged(ByVal sender As System.Object, ByVal e As
System.EventArgs) Handles RadioButton8.CheckedChanged
    If RadioButton8.Checked = True Then
        num1 = lblDisplay.Text
        lblTax.Text = FormatCurrency(TotalCost * num1)
        lblSubTotal.Text = FormatCurrency(num1 * lblSubTotal.Text)
        lblTotal.Text = FormatCurrency(lblTotal.Text * num1)
        lblPrice.Text = FormatCurrency(lblTotal.Text)

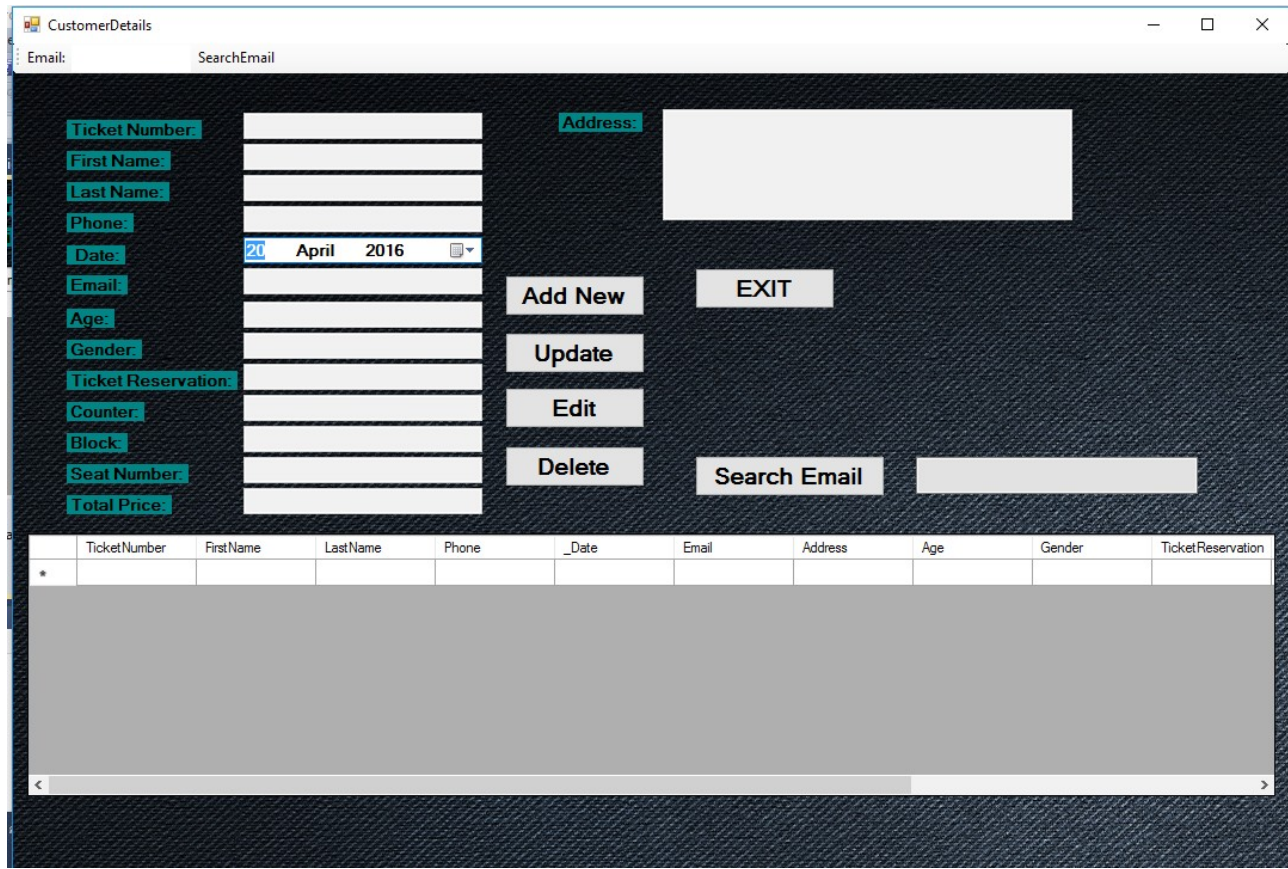
    End If
End Sub

Private Sub Button21_Click(ByVal sender As System.Object, ByVal e As System.EventArgs)
Handles Button21.Click
    CustomerDetails.Show()
    Me.Hide()

End Sub
End Class

```

## **Customer Information:**



## Coding:

Public Class CustomerDetails

Private Sub Table1BindingNavigatorSaveItem\_Click(ByVal sender As System.Object, ByVal e As System.EventArgs)

Me.Validate()

Me.Table1BindingSource.EndEdit()

Me.TableAdapterManager.UpdateAll(Me.TTSDatabaseDataSet)

End Sub

Private Sub CustomerDetails\_Load(ByVal sender As System.Object, ByVal e As System.EventArgs) Handles MyBase.Load

'TODO: This line of code loads data into the 'TTSDatabaseDataSet.Table1' table. You can move, or remove it, as needed.

Me.Table1TableAdapter.Fill(Me.TTSDatabaseDataSet.Table1)

End Sub

Private Sub Button1\_Click(ByVal sender As System.Object, ByVal e As System.EventArgs) Handles Button1.Click

TicketNumberTextBox.Enabled = True

FirstNameTextBox.Enabled = True

LastNameTextBox.Enabled = True

```
PhoneTextBox.Enabled = True
EmailTextBox.Enabled = True
AddressTextBox.Enabled = True
AgeTextBox.Enabled = True
GenderTextBox.Enabled = True
TicketReservationTextBox.Enabled = True
CounterTextBox.Enabled = True
BlockTextBox.Enabled = True
SeatNumberTextBox.Enabled = True
TotalPriceTextBox.Enabled = True
```

```
Me.Table1BindingSource.AddNew()
```

```
End Sub
```

```
Private Sub Button4_Click(ByVal sender As System.Object, ByVal e As System.EventArgs) Handles Button4.Click
```

```
Me.Table1BindingSource.RemoveCurrent()
```

```
End Sub
```

```
Private Sub Button2_Click(ByVal sender As System.Object, ByVal e As System.EventArgs) Handles Button2.Click
```

```
TicketNumberTextBox.Enabled = True
FirstNameTextBox.Enabled = True
LastNameTextBox.Enabled = True
PhoneTextBox.Enabled = True
EmailTextBox.Enabled = True
AddressTextBox.Enabled = True
AgeTextBox.Enabled = True
GenderTextBox.Enabled = True
TicketReservationTextBox.Enabled = True
CounterTextBox.Enabled = True
BlockTextBox.Enabled = True
SeatNumberTextBox.Enabled = True
TotalPriceTextBox.Enabled = True
```

```
End Sub
```

```
Private Sub Button5_Click(ByVal sender As System.Object, ByVal e As System.EventArgs) Handles Button5.Click
```

```
Me.Validate()
Me.Table1BindingSource.EndEdit()
Me.Table1TableAdapter.Update(Me.TTSDatabaseDataSet)
TableAdapterManager.UpdateAll(Me.TTSDatabaseDataSet)
TicketNumberTextBox.Enabled = False
FirstNameTextBox.Enabled = False
LastNameTextBox.Enabled = False
PhoneTextBox.Enabled = False
EmailTextBox.Enabled = False
AddressTextBox.Enabled = False
AgeTextBox.Enabled = False
GenderTextBox.Enabled = False
TicketReservationTextBox.Enabled = False
CounterTextBox.Enabled = False
BlockTextBox.Enabled = False
SeatNumberTextBox.Enabled = False
TotalPriceTextBox.Enabled = False
```

```
End Sub
```

```
Private Sub SearchNameToolStripButton_Click(ByVal sender As System.Object, ByVal e As System.EventArgs)
    Try
        Me.Table1TableAdapter.SearchName(Me.TTSDatabaseDataSet.Table1)
    Catch ex As System.Exception
        System.Windows.Forms.MessageBox.Show(ex.Message)
    End Try
End Sub
```

```
Private Sub Button3_Click(ByVal sender As System.Object, ByVal e As System.EventArgs) Handles Button3.Click
    Me.Table1TableAdapter.SearchEmail(Me.TTSDatabaseDataSet.Table1, TextBox1.Text)
End Sub
```

```
Private Sub Button6_Click(ByVal sender As System.Object, ByVal e As System.EventArgs) Handles Button6.Click
    Me.Close()
End Sub
End Class
```

## LIMITATIONS

Our project meets the following limitations:

- 1) The software is not able to reserve tickets for more than 10 people per train.
- 2) The fare allotted for every reservation is independent of Kilometres travelled instead it is set for every mode (AC, Non-AC or General) of each train.
- 3) The software is made such to carry out reservation in max 15 trains.
- 4) The software does not support multi-day reservation system, i.e., the reservations cannot be done in advance rather it is carried out for single day.
- 5) The software does not provide concession in fare rates for children, aged people, armament etc. i.e., the fare identical for all people.

- 6) The software does not take into consideration the stations falling in between the source and destination station.

## **FUTURE SCOPE**

If anyone wants to extend this project then he/she can make an additional database of Train Fare. And database for updated availability of seats which is available after the cancellation of ticket on that specific train etc. He/she can also add some more command buttons in the existing software and extend working of the existing software.

Implementations of this project idea are in industrial use. Hence, this can be used for suggesting improvements in design, performance and greater usability. Apart from the industrial applications, it is a research-oriented project as well, the task of performance evaluation of different database designs, for efficiency, is in this spirit.

## REFERENCES AND BIBLIOGRAPHY

### ➤ BOOKS USED:

- Object Oriented Programming C++ (E. Balaguruswami)
- Introducing C++ (Sumita Arora)
- Software Engineering (Shalini Puri)
- Software Engineering (Pressman)

### ➤ SITES USED :

- [www.scribd.com](http://www.scribd.com)
- [www.irctc.com](http://www.irctc.com)
- [www.indianrail.com](http://www.indianrail.com)
- [www.wikipedia.org](http://www.wikipedia.org)
- [www.yatra.com](http://www.yatra.com)
- [www.trainenquiry.com](http://www.trainenquiry.com)