



# The Maple Lake MESSENGER

Your Hometown Newspaper!

Volume 120, Number 29 • Wednesday, April 15, 2015 • Maple Lake, MN 55358 • maplelakemessenger.com \$1

## Inside . . .



Parkinson's fundraiser: page 2



Irish Track: page 8

**Lawn and Garden Spring Directory:**  
pages 6-7



## Coming up

- \* 6th grade musical is April 16
- \* Prom & Post Prom Party is April 18
- \* Co-Curricular Awards are April 21

## Severe Weather Awareness Week

Are you ready for severe weather? Minnesota Severe Weather Awareness Week is April 12 to 18. Each year, in collaboration with the National Weather Service, state and local agencies sponsor this week to refresh, remind and educate everyone about the seasonal threats from severe weather and how to avoid them. It's also a great time to make and practice your emergency plan and build or refresh your emergency preparedness kit.

This year's tornado drill day will be Thursday, April 16th, at 1:45 p.m. and 6:55 p.m. Outdoor warning sirens and NOAA Weather Radios will sound in a simulated tornado warning. The first drill is intended for institutions and businesses. The evening drill is intended for second shift workers and families to practice their severe weather plans.

Each day of the week will focus on a different topic:

- Monday - Alerts and Warnings
- Tuesday - Severe Weather; Lightning and Hail
- Wednesday - Floods
- Thursday - Tornadoes (Tornado Drill Day)
- Friday - Extreme Heat

## Commemorate Maple Lake's 125th Anniversary



Buttons are now on sale at various businesses around Maple Lake. Celebrate Maple Lake's 125th Anniversary on June 6, 2015.

# NATIONAL VOLUNTEER WEEK

Look for ways that you can lend a helping hand

National Volunteer Week celebrates ordinary people that, day in and day out, do extraordinary things.

It salutes the individuals that find that extra hour to lend a hand where it's needed and honors their enormous contributions. It reminds us all to thank the volunteers we see in our lives, to give them the handshake or pat on the back they so richly deserve.

But, perhaps more than anything else, National Volunteer Week is about taking action. To decide that not only can YOU do something to make a difference in a life, a community or the world, but that by encouraging others to do the same, to join forces and work together for a common goal, most anything can be accomplished.

### To be a volunteer, it takes...

- Generosity, a willingness to give your time to others
- Understanding, because their lives might be very different from your own
- Empathy, an ability to put yourself in someone else's shoes and feel what they must feel
- Compassion, to truly care about making someone else's life better
- Patience, because the process doesn't always go as smoothly as it might
- Dedication, to stick with the

project and see it through

Take the first step, be a volunteer, whether it's picking up trash in your own neighborhood or helping an organization or group.

### Listed are just a few volunteer opportunities near you:

#### American Legion and local veterans

Volunteer opportunities:

- Inside and outside maintenance at the Legion Club
- Food servers
- Help for individual vets on an as-needed basis

Contact: Monica Scheiber, manager, American Legion Post 131, 320-963-3911.

#### City of Maple Lake

- City of Maple Lake's 125th Celebration on June 6, 2015

A variety of help is needed during the June 6 celebration. They'll be short shifts so you'll have plenty of time to enjoy the fun!

Contact: Julie Hudek, 320-963-5899

- Hwy. 55 Beautification project, (TBA, possibly May 30)

The Highway 55 Beautification project is funded by MnDOT. They provide grants for landscaping materials and the



Left: Volunteers Della Ness, Marie Mavencamp, and Denise Blizil volunteering at the Library's Barnes & Noble Book Fair. Right: Volunteer Jesse Spike dressed as an apple for storybook reading at MLE. (Photos submitted)



community volunteers do the planting and maintenance.

Volunteer opportunities include planting trees and shrubs, spreading mulch, other landscaping tasks.

Contact: Lynn Kissock (Mayor) at [lynn.kissock@ci.maple-lake.mn.us](mailto:lynn.kissock@ci.maple-lake.mn.us)

#### DNR (MN)

Opportunities change depending on the season. Right now, the DNR is looking for volunteers to

help radio collar sharp-tailed grouse, count loons and frogs, protect trees, bait hooks at fishing clinics, pull invasive plants, and search for rare wildflowers.

Contact: Volunteer positions are listed on the DNR website at [www.dnr.state.mn.us/volunteering/opps/index.html](http://www.dnr.state.mn.us/volunteering/opps/index.html), or call the DNR Information Center at 651-296-6157 or 888-646-6367.

#### Food Shelf (Annandale/Maple Lake)

Volunteer opportunities:

- Restock shelves and box food for clients (must be able to lift 40 lbs.)
  - Looking for people with computer skills
- Contact: Jean and/or Ed: [jeaned@lakedalelink.net](mailto:jeaned@lakedalelink.net)

#### Love INC Big Woods

Love Inc enables churches in a community to coordinate their resources and services. Their network of churches include Bethlehem United Church of Christ, Holy Cross Lutheran Church, St. Timothy's Catholic Church, all of Maple Lake, Silver Creek Community Church and seven other churches from Buffalo.

Volunteer opportunities include furniture delivery, moving help, minor car repair, minor household repair, Lullaby Ministry (baby items), transportation to medical appointments or job interviews.

Contact: Connie for more information, 763-682-2550.

#### Maple Lake Community Theater

MLCT produces at least one major play or musical every winter.

Volunteers needed: Actors, Singers, Musicians, Directors, Set Builders, Decorators, Painters, Costumers, Hair Dressers, Make-up Artists, Light/Sound Operators, Stage Hands, Ticket Takers, Concession Workers, and anybody who wants to help out. MLCT does not turn anyone away.

Facebook: <http://www.facebook.com/MapleLakeCommunityTheater>

Contact: [mlcommunitytheater@gmail.com](mailto:mlcommunitytheater@gmail.com) or 320-963-6277.

**Volunteer Week**  
continued on page 12

## Speaking of peace...



Lynn Elling holds up a picture of the earth, a prop he uses to remind his audience that we are all part of one big human family and should treat each other as such. Elling, the founder of World Citizen Inc., delivered a message of peace last week in Buffalo. Sitting next to him is retired minister, Rev. Bill Weir. (Photo by Brenda Erdahl)

by Brenda Erdahl  
Correspondent

In 1941 Lynn Elling was called to serve his country in WWII, since then he has been calling others not to war, but to peace.

At 94 years old, Elling is the founder of the Annual Nobel Peace Prize Youth Forum, the co-author of the 1971 Minnesota Declaration of World Citizenship and founder of World Citizen Inc.

On Wednesday, April 8, he visited Buffalo to spread his message of peace in Wright County.

"One of my props is this beautiful picture of the earth," Elling said, holding up a poster of the earth that was roughly the size of a legal pad. "All of you should think about having a poster like this in every classroom and every place of worship," he told the small group of

individuals gathered at Huikko's Bison Creek Bar and Grill to hear his story.

"Notice we don't have any slogans on it. It doesn't say do this or do that, but think about the impact it has on a little fifth grader who sees this every day when he or she comes to class. . . it reminds that youngster that we are all part of one big human family and we're living on this space ship."

Brought to Wright County by the Buffalo Unitarian Universalist Fellowship, Elling's message is one that was planted as a seed in his brain during his days as a naval officer in WWII.

"I ended up on an LST," he said. "I don't know if anyone knows what an LST is, but it stands for Landing Ship Tank. It's a horrible ship, because it can go only nine knots and it rams up on the beach and is stuck there while they unload

the Marines and their tanks and guns. It wasn't anything to look forward to because we were headed to Tarawa.

"I don't know if any of you know anything about Tarawa, but it was a horror scene No. 1. Some 6,000 young men were slaughtered at Tarawa alone."

Although Elling's ship was diverted three days before the battle and turned into a supply ship, they eventually landed on that beach and saw first-hand what the brutality of the war had wrought. The image planted a seed of peace in Elling's mind that never left, he said.

For two years Elling traveled with the Navy and saw many other battles. He found himself at sea again during the Korean War, then later, he "marched with the kids" to protest the Vietnam War.

**World Citizen**  
continued on page 2

## Russell, Stejskal to State Speech tourney



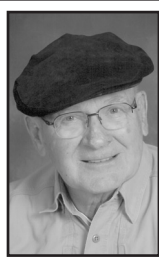
Tyler Russell and Charlie Stejskal, pictured at the Section 5A speech competition with speech coach, Eric Meyer, and an unofficial team mascot, 'Good Luck Bear,' from the Care Bears.

Both young men are advancing to the Minnesota State High School Speech Tournament in Lakeville on Friday. Russell placed second in Great Speeches, and will be making his first trip to State.

Stejskal's section championship in Extemporaneous Speaking earned him his third trip to the state tournament. (Photo by Susan Petersen-Stejskal)



# Viewpoint



## Brute's Bleat

by Harold Brutlag

Sunday night's 1/4 inch of rain was a good start as rains go and all of a sudden the lawns are turning green and the tulips look like they're ready to pop any day now. Morel mushrooms are about a month away, but I expect to see the spring flowers start to show their violet colors soon as well as the blood roots popping up. We see pheasants occasionally in Ney Park, but the eagles are either staying low in their nest or have changed locations. Last week we, Vanna and I, took time to look at the animals in the Johnson Cattle Co. pasture across from the park (west side of Endicott Ave. NW). This



burro was the first animal to show some interest in us and was one of four that share the pasture with the Texas Longhorn cattle.

Owner of the Johnson Cattle Co., Ron Johnson, said the

burros have a purpose in that they keep predators away from the cattle. He said the burros came from the Custer State Park in North Dakota. Johnson said he started pasturing Longhorns in Maple Lake



Township 12 years ago. He has cattle in two other pastures in Minnesota and raises them primarily for breeding stock. This year's calves and the cows weren't quite as friendly as the burros and gradually moved away from the gated pasture while I took these photos. Needless to say, I stayed on my side of the fence. As an old farm boy I was fascinated by the animals, although my experience was with milking and tending the dairy cows.

\* \* \*

Mille Lacs Lake anglers will need to read the new rules that will govern fishing on that lake this summer. What will probably hurt anglers the most isn't the one-fish limit on walleyes, but prohibiting night fishing after May 11 when there's no fishing from 10 p.m. to 6 a.m. The two exceptions to night fishing are muskie angling and bow fishing for rough fish. The new rules for the lake take up one typed page (8 1/2 x 11"), more space than I wanted to use, so you're on your own.

\* \* \*

I noticed four wood ducks flying on the north side of Division St. in Maple Lake Sunday morning about 7 a.m. when I went after the Sunday paper for Janis.

## World Citizen

continued from page 1

But it wasn't until he visited Hiroshima, Japan at the age of 45 that the second seed of peace was planted in his mind.

In 1982, he started World Citizen Inc., a non-profit organization based in Saint Paul with a mission to empower communities to educate for a just and peaceful world.

Here educators can enroll in online and onsite classes and work shops where they can find tools and ideas to create peaceful classrooms and conscien-

tious students.

"We should start in preschool," Elling said. "With the little ones. No matter what age, introduce the notion, get them to start thinking about being a passenger on that same spaceship."

Elling has always followed with Gandhi's prediction that the way to peace is through the children.

With that in mind, he helped to create the Annual Nobel Peace Prize Youth Forum held

at Augsburg College that this year attracted hundreds of youth throughout the state to hear Nobel Peace Prize Laureate President Jimmy Carter speak.

"I would love to send a busload of kids from Wright County to the Peace Festival at Augsburg College next March," Maria Maki of Annandale said after Elling's presentation.

Maki, a member of the First Universalist Church, played a vital role in bringing Elling to

Buffalo to speak. Her hope was that Elling would inspire local leaders, educators in particular, to get on board with his teachings.

"Teachers have such an opportunity to inspire the youth about peace and the world picture," she said. "But it is going to take someone to go to the trainings and get things going."

For more information on World Citizen, Inc. and the classes it offers, visit [www.peacesites.org](http://www.peacesites.org).

# Parkinson's fundraiser a success



Left: Just some of the volunteers who helped organize and run the Parkinson's fundraiser last Saturday, March 11th. Left to right: Wayne Gangl, Brett Austin, Ed Shanks, Nancy Henjum, Maggie Henjum, Mellie Morszak, Mary Henjum and Skip Ristvedt. Right: Auctioneer Wayne Gangl encourages bids from the crowd. (Photos by Bob Zimmerman)



Left: 59 bottles of wine were donated by friends, family and staff from Maple Lake Schools for the Wine Pull. Right: A line of guests check out the silent auction items. An estimated \$10,000 was raised at the event for Parkinson's Disease with close to 200 people in attendance. (Photos by Bob Zimmerman)



## Ask a Trooper

by Sgt. Jesse Grabow

**Question:** Can a person with a handicapped parking permit park at a meter without having to pay?

**Answer:** If there's a physically disabled person in the vehicle, a vehicle can be parked in a metered space without payment if certain requirements are met, according to Minnesota State Statute (M.S.S.) 169.345 "Privilege for the physically disabled."

A vehicle that "prominently displays the certificate authorized by this section or that bears the disability plate or plates may be parked by or solely for the benefit of a physically disabled person in a... metered parking space without obligation to pay the meter fee and without time restrictions unless time restrictions are separately posted on official signs.

"A person may park the vehicle for a physically disabled person in a parking space only when actually transporting the physically disabled person for the sole benefit of that person and when the parking space is within a reasonable distance from the drop-off point." Note, the vehicle must display the required certificate or license plate.

*A portion of state statutes was used with permission from the Office of the Revisor of Statutes. If you have any questions concerning traffic related laws or issues in Minnesota, send your questions to Trp. Jesse Grabow - Minnesota State Patrol at 1000 Highway 10 West, Detroit Lakes, MN 56501-2205. (You can follow him on Twitter @MSPPIO\_NW or reach him at, [jesse.grabow@state.mn.us](mailto:jesse.grabow@state.mn.us)).*



## Thank You

*This column is not intended for items of personal thanks, promotion or editorial comments. Its purpose is to simply give recognition to local residents for their contributions to our community.*

### CARD OF THANKS

The family of Roger James Wurm would like to send heartfelt thanks to the following businesses and individuals:

To the Allina Hospice care team and Select Home Care for the wonderful care they gave him the last year.

To Father Meyer and the Resurrection Choir for the beautiful funeral service.

To B&P Catering for the delicious meal after the service.

To the Maple Lake Fire Department for their very impressive presence at the funeral.

To all the Sisters from St.

Benedict's Monastery for the prayers and attendance at the funeral.

To all the relatives and friends for the cards, gifts, prayers, visits and support.

Special thanks to Marilyn Hochstedler for her visits and comfort, to Roger and Rick Geyen for helping the family when called upon.

Last but not least, the staff of the Dingmann Funeral Care for the wonderful way they took care of the arrangements and the family.

Thanks again,  
Roger James Wurm Family

### CARD OF THANKS

We would like to say "Thank You" to all of Mert's family, friends, and neighbors for the love and kindness we received during her illness and at the time of her death. Your cards, phone calls, visits, food brought to the home and prayers were so ap-

preciated. Thank you also to Pastor Michael Fritz and the Bethlehem United Church of Christ Women's Guild.

May God bless you all,

The family of "Mert" Mytle Marquette,

Laurie and Kirt Stuve

Nancy and Dean Sorenson

## The Maple Lake MESSENGER

Maple Lake, MN 55358

• Michele Pawlenty, Publisher  
[publisher@maplelakemessenger.com](mailto:publisher@maplelakemessenger.com)

• Harold Brutlag, Master Printer, Columnist, Publisher 1968-2000  
• Kayla Erickson, Projects Manager  
• Vicki Grimmer, Ad Sales/Marketing  
• Sam Zuehl, Newspaper Ad Design/Sales  
• Linda Ordorff, Office/News  
• Mollie Graham, Student Intern

Subscription Rates  
\$25 per year in Wright County  
\$28 Minnesota Out of County  
\$52 Out of State  
E-Edition Free with print subscription  
(No refunds on unexpired subscriptions)

Postmaster  
For change of address send old address with current address to the Maple Lake Messenger, P.O. Box 817, Maple Lake, MN 55358  
MAPLE LAKE MESSENGER (USPS 3285-6000)

Deadlines  
News: Monday at 4 p.m.  
Programs and Events: Monday at 4 p.m.  
Display Advertising: Monday  
Classified Advertising: Tuesday at noon

Phone: 320-963-3813  
Fax: 320-963-6114

News Email:  
[news@maplelakemessenger.com](mailto:news@maplelakemessenger.com)

Advertising Email:  
[ads@maplelakemessenger.com](mailto:ads@maplelakemessenger.com)

Website:  
[maplelakemessenger.com](http://maplelakemessenger.com)

Published every Wednesday at  
Maple Lake, MN 55358,  
Second Class Periodical Postage Paid at  
Maple Lake, MN 55358



MAPLE LAKE  
VETERINARY CLINIC

320-401-1300  
Now Open!

New veterinary clinic in Maple Lake!  
Full service care for your animals with  
24-hour on-call veterinarian.

Located on Highway 55 next to H&H Sport shop.  
We also have locations in Watkins (320-764-7400) and Kimball (320-398-3600)  
Call now for an appointment!



## Maple Lake Housing Development Corporation Annual Meeting

You are hereby notified of the annual meeting of the members of the Maple Lake Housing Development Corporation to be conducted at the Maple Lake Manor Apartments (West) Lounge, Maple Lake, MN 55358 on

**Wednesday, April 29, 2015 at 9 a.m.**

Two directors will be elected to serve on the board of directors for a three year term.

Persons interested in serving on the board of directors may call Cathy Elfstrand at 320-963-5283.

•• Your attendance will be appreciated ••



5th Season - Free Admission!  
Every Sunday\* - 7AM - 2PM

Open: April 12 - October 25

110 Birch Avenue South • Maple Lake  
(Maple Lake Museum grassy area/parking lot/sidewalk)

\$10 Day of set-up at 7am  
(\$15 w/ large table)

Fundraiser to help support the Maple Lake Museum!  
\* New Day! Monticello Market is now closed.

Contact John Haack at 612-819-4225



## April 13 Wright County Sheriff's report

On April 6, Michael John Flasch, 32, of Monticello, was arrested in Buffalo on a Wright County warrant for 1st degree DWI probation violation.

On April 6, Nathan Skip Neumann, 18, of Annandale, was arrested in Howard Lake on the charge of domestic assault.

On April 6, Haley Ann Kammerer, 50, of Annandale, was arrested in Annandale on a Douglas County warrant for 3rd degree DWI violation of conditional release.

On April 6, Roger Charles Fiecke, 48, of Winsted, was arrested in Buffalo on a Wright County warrant for weapon possession violation.

On April 6, Derek Steven Heidelberger, 25, of Montrose, was arrested in Montrose on a Wright County warrant for domestic assault.

On April 7, Shannon Lee Lindquist, 46, of South Haven, was arrested in Annandale on the charge of 2nd degree DWI.

On April 7, Zachary Vincent Wolf, 18, of Annandale, was arrested in Buffalo on a Wright County apprehension and detention order for 5th degree sale of a controlled substance violation.

On April 7, Kerry Wayne Anderson, 49, of Monticello, was arrested in Buffalo on Wright County warrants for terroristic threats and 4th degree assault.

On April 7, Amanda Jeanette Dunning, 38, of Rockford, was arrested in Rockford on Wright County warrants for terroristic threats and 3rd degree DWI.

On April 8, Justin James Burgess, 26, of Monticello, was arrested in Sherburne County on a Wright County warrant for 2nd degree DWI violation.

On April 8, Daniel Patrick Nichols, 28, of Buffalo, was arrested in Buffalo on a Wright County apprehension and detention order for possession of stolen property and a Hennepin County warrant for theft.

On April 8, Darrian Lee Edwards, 22, of Buffalo, was arrested in Buffalo on the charge of 1st degree possession of a controlled substance.

On April 8, Brelynn Rose Miller, 20, of Buffalo, was arrested in Buffalo on the charge of 1st degree possession of a controlled substance.

On April 8, Cheyenne Lee Clough, 18, of Buffalo, was arrested in Buffalo on the charge of 1st degree possession of a controlled substance.

On April 8, Benjamin Joseph Buchite, 25, of Maple Lake, was arrested in Buffalo on the charge of 1st degree possession of a controlled substance.

On April 8, Justin David Wirgau, 22, of Buffalo, was arrested in Buffalo on the charge of 1st degree possession of a controlled substance.

On April 8, Allen Dale Wirgau, 50, of Buffalo, was arrested in Buffalo on the charge of 1st degree possession of a controlled substance.

On April 8, Jordan Paul Nelson-Lundgren, 31, of Buffalo, was arrested in Buffalo on the charge of domestic assault and 5th degree assault.

On April 8, David Francis, 54, of Monticello, was arrested in Monticello on the charges of disorderly conduct and trespassing.

On April 8, Trevor Allen Heitland, 22, of Monticello, was arrested in Monticello on a Wright County warrant for theft.

On April 9, Chelsea Renee Scherr, 22, of Monticello, was arrested in St. Louis County on Wright County warrants for 3rd degree criminal sexual conduct and theft.

On April 9, Hannah Elizabeth Bagne, 18, of St. Michael was arrested in St. Michael on the charge of terroristic threats.

On April 10, Brandon Duane Heck, 22, of Montrose, was arrested in Carver County on a Wright County warrant for under 21 liquor consumption.

On April 10, Jason Ray Davis, 35, of Monticello, was arrested in Monticello on a Wright County warrant for obscenity violation.

On April 11, Dakota Ray Larson, 22, of Buffalo, was arrested in Buffalo on the charge of procuring alcohol for a minor.

On April 11, Todd Joseph Neuman, 49, of Monticello, was arrested in Monticello on the charge of 5th degree controlled substance possession.

On April 11, Dillon Scott Hagedorn, 21, of Buffalo, was arrested in Buffalo on the charge of 5th degree controlled substance possession.

On April 11, Jacqueline June Weide, 47, of Buffalo, was arrested in Greenfield on a Wright County warrant for theft.

On April 11, Bradley Darryl Arnold, 51, of Buffalo, was arrested in Albertville on the charge of driving after cancellation inimical to public safety.

On April 11, Anthony Edward Stewart, 24, of Kimball, was arrested in Corinna Township on the charge of 5th degree controlled substance possession.

On April 11, Lance Burton Hellerud, 44, of Annandale, was arrested in Maple Lake Township on the charge of 3rd degree DWI.

On April 12, Rebecca Ann Smith, 42, of Monticello, was arrested in Monticello on the charge of 3rd degree DWI.

On April 12, John Paul Eldred, 46, of Ogilvie, was arrested in Clearwater on an Isanti County warrant for dishonored check.

On April 12, Dylan Ray Cochran, 23, of Monticello, was arrested in Waverly on a Wright County warrant for domestic assault.

There were 16 property damage accidents, 3 personal injury accidents, no hit and run accidents and 5 car-deer accidents.

There were 6 arrests for DWI, no underage consumption arrests, 3 school bus stop arm violations and 63 tickets for miscellaneous traffic violations reported this week.

## April 6 Wright County Attorney's report

Buker, Juan Carlos Michael, age 34, of Rockford, sentenced on 04/06/15 for Probation Violations for Gross Misdemeanor Domestic Assault to 59 days jail. Sentenced by Judge McPherson.

Cabrera, Hipolito, age 23, of Monticello, sentenced on 04/06/15 for Probation Violations for Gross Misdemeanor Domestic Assault to 365 days jail. Sentenced for Probation Violations for Gross Misdemeanor Assault in the Fifth Degree to 365 days jail. Sentenced by Judge McPherson.

Durand, Kimberly Sue, age 29, of Buffalo, sentenced on 04/10/15 for Probation Violations for Gross Misdemeanor Third Degree DWI to 3 days jail. Sentenced by Judge Strand.

Holmers, Brian Charles, age 37, of Howard Lake, sentenced on 04/08/15 for Probation Violations for Felony Controlled Substance Crime in the Fifth Degree to 15 months prison. Sentenced by Judge Davis.

**Sentencings**  
continued on page 12

## April 6 Maple Lake Fire Department Report

Maple Lake's Volunteer Fire Department and Ambulance Service responded to the following emergencies during the past week:

**April 12**, 6:10 a.m.: Medical. Patient transported by Maple Lake Ambulance to the St. Cloud Hospital ER.

**April 9**, 1:07 a.m.: Medical. Call cancelled.

**April 8**, 9:22 p.m.: Medical.

## County approves bidding out sheriff's support building

by John Holler  
Correspondent

For decades, when it has come to housing items for the Wright County Sheriff's Department, whether it be confiscated vehicles or their own storage items, the process of maintaining and protecting them was done of a piece-meal basis. Without room within the county courthouse, where the county jail was located, storing those items had to take place off-sight. The county's impound lot was located at the Public Works Building and county equipment had to be kept in cold storage at different facilities near the Law Enforcement Center in Buffalo.

That is about to change. At the April 7 meeting of the Wright County Board, the commissioners approved sending out the bid specifications for a support services building to be constructed on the Law Enforcement Center property.

Sheriff Joe Hagerty said the facility has been needed for some time, since law enforcement has many tools at its disposal and the new building will give the county a one-stop loca-

tion for all of them.

"We are building a facility on the north side of the Law Enforcement Center property to house all of our equipment," Hagerty said. "It will house a lot of things, from our command post to our airboat to snowmobiles to our patrol boats to larger items of evidence. It will also include our impound lot, where we can put all of our confiscated and evidence vehicles."

With construction ongoing at the Public Works site, the current impound lot is going to be re-purposed for the highway department to use, which will add the new impound lot area to the support building project. The building will be pretty substantial – 225 feet by 78 feet and the hope, said Todd Hoffman of the sheriff's department, is that the bids will come in at a six-figure level, not seven.

"The whole project we're trying to keep under \$1 million," Hoffman said. "That would include everything – the building, dirt work, power, gas, fencing, lighting, you name it. The goal is to keep it under \$1 million because it is intended to

## Extra caution needed during planting season

The Wright County Highway Department would like to remind Wright County citizens to use extra caution on county highways now that farmers are in the fields and using the roadways to transport trucks and equipment from storage facilities to the fields.

Farm-related truck traffic increases significantly during the planting season, both in volume and in the number of hours on the

road. Motorists are urged to watch for tractors pulling wagons at slow speeds, as well as plows, planters and other wide equipment that may go over the center line (due to vehicles taking wide turns because of their size). The leading contributing crash factors in farm vehicle crashes are inattention, speeding, and unsafe passing.

Please be alert and prepared

for slow-moving farm vehicles, especially on rural, two-lane highways. Motorists need to give them extra space and use caution when attempting to pass.

Motorists should also watch for fallen debris from farm-related vehicles and remember that it is safer to brake or drive through the debris rather than veer into oncoming traffic or off the road. Farm-related traffic is

be approved by May and the construction can begin. In fact, some of the items needed for the preliminary portions of the construction can begin immediately. The Wright County Highway Department is going to be in charge of the land grading at the site and Hagerty said the plan will be to hit the ground running so the facility can be up and running by July.

"We could start grading for the impound lot as early as tomorrow once it's approved," Hagerty said. "We're looking to fast-track this so it will be completed by mid-summer. Once we get the ball rolling on this, we see the project coming along quickly."

In other items on the April 7 agenda, the board:

\* Set a meeting with officials from the Tri-County Crime Lab for 1:30 p.m. Tuesday, April 21. Given the proximity of the date, the board set an alternate day for the meeting for 10:30 a.m. Tuesday, May 5.

**County Board**  
continued on page 12

## Wright County Highway Dept. to spray roadsides

Beginning May 18, 2015, the Wright County Highway Department, as part of its vegetation management program, will be scheduling some roadside vegetation work along all Wright County highways. The unwanted brush and noxious weeds will be cut and/or treated with herbicide.

This notice is to inform all property owners who have property abutting county highways of the work that is scheduled and their right to use alternative methods.

The goal is to eliminate the brush and noxious weeds and promote grass cover along the roadside. Brush along the road

reduces driving visibility, obstructs road signs and reduces driver reaction time to crossing wildlife. Brush presents maintenance problems by retaining water along the roadbed, obstructing ditches and damaging equipment.

To meet these goals, selective herbicides are used that control the brush and noxious weeds but allow the grasses to grow, unharmed. All herbicides used have been fully tested and are approved for use by the U. S. Environmental Protection Agency and the Minnesota Department of Agriculture.

During the spraying operation, care is taken to avoid sensitive areas adjacent to the right-of-way such as tree plantations, ornamental plantings, crops, gardens, front yards, lakes and streams.

If you would like to maintain the right-of-way adjacent to your land in some other fashion, such as mowing, please follow these instructions:

1. Prior to May 18, stop at the Wright County Public Works Building (located along State Highway 25 at the Jct. of CR 138 on the north side of Buffalo) and fill out the proper form including property description.

2. Post, on your property, the "DO NOT SPRAY" signs that you will be given.

3. Remove the brush and/or noxious weed plants (such as thistles, wide parsnip, and leafy spurge) within that site by June 20, 2015, and continue to maintain it. If the brush and/or noxious weeds are not removed, they must treated as part of the vegetation management program.

If you have any questions, please call the Wright County Highway Department at 1-800-362-3667, ext. 7383 or (763) 682-7383.

## Speak up: distracted driving changes lives

### Extra enforcement on MN roads April 13-18

A young mother of two is killed while on a bike ride with her kids by a man distracted by his cell phone. A mother of a toddler who was seriously injured when a teen driver was reading a text said, "One text almost killed my son."

These Minnesotans' lives were changed forever by a distracted driver, and starting Monday, law enforcement will be looking to catch drivers who are focused more on their phones than on the road. The extra enforcement runs April 13 to 18.

#### Speak Up

Distracted driving is a leading factor in crashes each year in

Minnesota. Law enforcement is the last line of defense when it comes to distracted driving and officers encourage anyone riding with a distracted driver to speak up.

#### Eyes off the Road Equals Crash behind the Wheel

• At 55 miles per hour, texting and driving is like traveling the length of a football field without looking up.

• The result of distracted driving can be devastating as it contributes to one in four crashes, 64 deaths and 234 serious injuries each year.

• Preliminary numbers show that distraction was a factor in

16,900 crashes in 2014, resulting in 56 deaths and 165 serious injuries.

#### The Law in Minnesota

In Minnesota, it is illegal for drivers to read, compose or send texts and emails, and access the web while the vehicle is in motion or a part of traffic. That includes sitting at a stoplight or stop sign. It is also illegal for drivers with a permit or provisional driver's license to use a cell phone while driving, except for emergencies to call 911.

#### Make the Right Choice

• Cell phones - Put the phone down, turn it off or place it out of reach.

• Music and other controls - Pre-program radio stations and arrange music in an easy-to-access spot. Adjust mirrors and ventilation before traveling.

• Navigation - Map out the destination and enter the GPS route in advance.

• Eating and drinking - Avoid messy foods and secure drinks.

• Children - Teach children the importance of good behavior in a vehicle and model proper driving behavior.

• Passengers - Speak up to stop drivers from distracted driving behavior and offer to help with anything that takes the driver's attention off the road.

## Adopt a Highway volunteers save state money

Volunteers helping with the Adopt a Highway program picked up 970,000 pounds, more than 100 dump truck loads, of litter in 2014, saving the state an estimated \$7 million, according to the Minnesota Department of Transportation.

The Adopt a Highway program is staffed by more than 48,000 volunteers representing schools, businesses, non-profits, families and individuals who are helping to clean up more than 10,000 linear miles of Min-

nesota's highways.

Even with these great efforts, MnDOT is looking for more volunteers to help with this public service campaign. To become part of the program, the volunteer groups agree to:

• Adopt a highway for a minimum of two years

• Select a segment of highway approximately two miles in length (only select sections of state highways are available for adoption due to safety concerns)

• Pick up litter on both sides of

the highway

• Pick up litter as often as needed from spring through fall, usually two to three times

MnDOT provides a safety video, trash bags for cleanup and safety vests for each volunteer. The high-visibility color and reflective tape make litter crews more visible to passing motorists.

After the group completes its cleanup, MnDOT crews pick up the filled bags and large, heavy or hazardous items from the roadside. State workers, not volun-

teers, are responsible for litter pickup along the interstate.

Another Adopt a Highway option is "Pick A Highway," which allows an individual, family, business or group the option of trying out the program with a one-time pickup of litter along an unadopted section of state highway.

Those interested in participating in the program can visit [www.mn-dot.gov/adopt/contacts.html](http://www.mn-dot.gov/adopt/contacts.html) for local contact information.



# Community



## Meetings

**April 16: Wright Saddle Club**, clubhouse, Maple Lake, 7:30 p.m. New members always welcome; Krista, 320-963-3990.

**April 16: Maple Lake Legion Post 131 Auxiliary**, 7 p.m., Legion Club.

**April 18: AA & Al-Anon**, 7:30 p.m., Buffalo Evangelical Free Church, 2051 50th St. NE, County Rds. 25 & 113.

**April 18: AA**, 7:30 p.m., Buffalo Evangelical Free Church, 2015 50th St. NE, County Rds. 25 & 113.

**April 20: S.A.M. quilting group**, St. Timothy's Church basement, 8 a.m.

**April 20: Multiple Sclerosis support group**, 12-1:30 p.m., Buffalo United Methodist Church. For more information, call Cathy at 320-274-8408 or

Mary Jo, 612-353-1460.

**April 20: Al-Anon and Men's 12 Step Group**, 7:30 p.m., Buffalo Evangelical Free Church, 2051 50th St. NE, County Rds. 25 & 113.

**April 21: Maple Lake City Council**, 7 p.m., city hall.

**April 21: Annandale Lakers AA & Al-Anon**, 8 p.m., United Methodist Church of Annandale, 20 Oak Ave. N. 320-274-3380

**April 21: Gamblers Anonymous & AA**, 7:30 p.m., Buffalo Evangelical Free Church, 2051 50th St. NE, County Rds. 25 & 113.

**April 21: Celebrate Recovery** (non-denominational Christian-based recovery program), 7 p.m., Monticello Covenant Church; 763-295-2112.



## And that's the way it was . . .

Karen and Dave Lein were named the big winners of the 2010 Chevrolet Cobalt Sedan LT at the St. Timothy's Spring Auction and Dinner. ... The Maple Lake School District had it narrowed down to five candidates for the position as MLHS principal. ... Starting the season off, the Maple Lake Irish baseball team won 9-2 against the Becker Bulldogs. ... Irish Head Coach Tim Staloch was named the Central Minnesota Conference Boys Basketball Coach of the Year. **...And That's The Way It Was Five Years Ago This Week.**

Jerry McBrady and Pat McDonald constructed their first dolmen, an ancient concrete structure that originated from Ireland. ... The Maple Lake Irish girls softball team defeated Mayer Lutheran 16-5 in their season opener. ... Dawn Lambert and Mary Bakeberg prepared for the Wright County Dairy Princess coronation. **...And That's The Way It Was 15 Years Ago This Week.**

Art Dingmann announced his preliminary plans to build a new funeral chapel in Maple Lake at a site just north of St. Timothy's Catholic Church. ... Dennis Gordan, former graduate from Annandale High School, created scenes for multiple Walt Disney movies, including "Honey I Shrunk the Kids." ... The Maple Lake Ghetto Basketball Tournament Board of Directors recently had its annual "Think Spring" Ghetto gathering in Denver, CO, to plan Maple Lake's 1990 basketball classic. **...And That's The Way It Was 25 Years Ago This Week.**

The Maple Lake senior class presented "The Night of January 16th" as their class play for the school and community. ... Andy's Red Owl sold 12 rolls of Charmin bathroom tissue for just one dollar. ... Fifty years ago, the Wright-Hennepin Cooperative Electric Association sold a washer and dryer for \$300. Today the average amount spent on a washer and dryer is a couple thousand. **...And That's The Way It Was 50 Years Ago This Week.**

## 60+ and Healthy Clinics

The 60+ and Healthy Clinics, provided by Wright County Public Health, provides foot care for the senior citizens of Wright County. Toenail trimming is offered to meet the needs of those seniors who have a health condition such as diabetes or are unable to trim toenails themselves.

The 60+ and Healthy Clinics will be charging a \$15 fee for foot care services. This fee is necessary because the clinics are no longer being funded by grant money. However, if you are unable to pay the fee, you will not

be turned away. The clinics are hosted from 9:30 to 11:30 a.m.

If you have any questions, please ask clinic staff or call WC Public Health at 1-800-362-3667 or 763-682-7456. Upcoming dates:

**Tuesday, April 21:** Maple Lake Maple Manor East, 333 2nd Street West

**Tuesday, April 28:** Monticello Senior Center, 505 Walnut Street, Suite 3

For the full schedule, visit: [www.co.wright.mn.us/forms/humanservices/60%20Plus%20and%20Healthy%20Schedule.pdf](http://www.co.wright.mn.us/forms/humanservices/60%20Plus%20and%20Healthy%20Schedule.pdf)

## 55+ Driver Improvement Program

The Minnesota Highway Safety Center will be offering 55+ Driver Improvement Program courses on the following days:

**April 16th (4Hr. Refresher Course)** 5:30 to 9:30 p.m., Buffalo Presbyterian Church, 507 County Rd. 134, Buffalo

**April 22nd (8Hr. First Time Course)** 8:30 a.m. to 5 p.m., Albertville City Hall, 5959 Main Ave. NE, Albertville

**April 22nd (4Hr. Refresher Course)** 12:30 to 4:30 p.m., Elk River – Handke Center, 1170 Main St., Elk River

The driver improvement course is open to the public; pre-registration is required. A MN Highway Safety & Research Center certified instructor

teaches this class. By utilizing the most up-to-date research in the field, participants will be provided the latest information in regards to driver safety, new laws, and vehicle technology. The fee for the four-hour refresher course is \$20 and the eight-hour course is \$24. For more information or to register, visit [www.mnsafety-center.org](http://www.mnsafety-center.org) or call TOLL FREE 1-(888)-234-1294.

Persons age 55 and older who complete the course qualify for a 10% discount on their auto insurance premiums for three years, according to Minnesota law. First-time participants must complete the initial eight hours of training and a four-hour refresher class every three years to maintain the 10% discount.

## SUDOKU

April 15th Puzzle

	5	3	1				4
1		6	3		2		
			5		3		
					2		5
			6	9		8	
2	7		9				
6	4			8	3		9
	3			5	1		7

Level: Intermediate

### Here's How It Works:

Sudoku puzzles are formatted as a 9x9 grid, broken down into nine 3x3 boxes. To solve a sudoku, the numbers 1 through 9 must fill each row, column and box. Each number can appear only once in each row, column, and box. You can figure out the order in which the numbers will appear by using the numeric clues already provided in the boxes. The more numbers you name, the easier it gets to solve the puzzle!

Answers on Page 11

## Cold Weather Rule ends April 15

Customers with past due natural gas bills should take steps to avoid having their natural gas service disconnected once the Cold Weather Rule (CWR) ends April 15. The Minnesota CWR protects residential customers who are having problems paying their natural gas bill from having

their service disconnected Oct. 15 through April 15. While the CWR does not prevent disconnection, it does protect qualified customers during the coldest months as defined in the rule.

For more information, visit the website at [CenterPointEnergy.com](http://CenterPointEnergy.com).

## WOW

Wellness on Wheels

Wright County Public Health offers cholesterol testing in the Wellness on Wheels van. The WOW Van schedule is available at [www.co.wright.mn.us](http://www.co.wright.mn.us) and [www.facebook.com/WrightCityPublicHealth](http://www.facebook.com/WrightCityPublicHealth) or by calling our new phone number, 763-682-7516 (toll-free 1-800-362-3667 ext 7516). Please use this number for more information or to make an appointment.

Wellness on Wheels Services include: Adult and Child Immunizations; Health Screening: Blood Pressure, Diabetes, Cholesterol (by appointment), Pregnancy, Health and Wellness; Child Car Seat Check (by appointment); Information about: Healthy Lifestyle - Exercise, Nutrition, Recommendations for Routine Medical Care, Safety - Individual, Home, Car Seat, Pregnancy, Childbirth, Parenting, Child Health, Growth & Development, Reproductive Health & Family Planning, Infectious Diseases, Chronic Illness, Unhealthy Lifestyle Behaviors, such as Smoking,

Drug and Alcohol Abuse, Unsafe Sex; Information and Assistance in Accessing Resources.

For immunizations, bring past immunization records to the van, if available. \* Van hours Monday through Thursday are from 2 p.m. to 6 p.m. and on Saturday from 9 a.m. to 1 p.m.

**Upcoming dates:**  
**Thursday, April 16:** Marketplace, Annandale

**Monday, April 20:** Walmart, Monticello

**Tuesday, April 21:** Clark Station, Montrose

**Wednesday, April 22:** Marketplace, St. Michael

**Thursday, April 23:** Marketplace, Cokato

**Saturday, April 25:** Cub Foods, Buffalo

The complete WOW van schedule is available online at: <http://www.co.wright.mn.us/departments/humanservices/wow>

Wright County Public Health offers cholesterol testing in the Wellness on Wheels (WOW) Van. The entire test takes about 30 minutes. We have two different test options. A 12 hour fast is required for a lipid profile including blood sugar screening. The cost is \$35. A non-fasting test is also available. This test gives your total cholesterol and HDL. The cost is \$25.

RELIABLE  
AUTO CARE

[reliable-autocare.com](http://reliable-autocare.com)

763-682-3222

Tires • Brakes • Oil Changes  
Suspension/Steering • Diagnostics & More!

MAINTENANCE SPECIAL!

Transmission OR Coolant FLUSH only

\$79.95

Not valid with any other offers.

Reliable Auto Care, Inc.

763-682-3222

1018 Hwy. 55 E • Buffalo NO EXPIRATION

\$21.99\*

Oil Change

\*Includes: Most cars and light trucks. Up to 5 quarts.

Reliable Auto Care, Inc.

763-682-3222

1018 Hwy. 55 E • Buffalo NO EXPIRATION

Build-Your-Own COUPON\*

EXAMPLE:  
\$10 OFF over \$100  
\$20 OFF over \$200  
\$30 OFF over \$300

\*Excludes Tires & Batteries. Up to \$30. Not valid with any other offers.

Reliable Auto Care, Inc.

763-682-3222

1018 Hwy. 55 E • Buffalo NO EXPIRATION

RELIABLE AUTO CARE  
Jeff & Kris Jackson, Owners • Mon-Thurs: 7 a.m.-6 p.m. • Fri: 7 a.m.-4 p.m.  
1018 Hwy. 55 East • Buffalo • 763-682-3222  
"We will not sell you something you don't need!"

Save the Date! June 6, 2015  
Maple Lake's 125th Anniversary

## Programs & Events

### Upcoming Red Cross blood drives

Donors of all types are encouraged to help save lives by giving blood. Appointments can be made by calling 1-800-RED-CROSS or visiting [redcrossblood.org](http://redcrossblood.org). Upcoming blood donation opportunities in Wright County: **April 28**, 1 - 7 p.m., St. James Lutheran Church, 1000 6th Ave., Howard Lake; **May 2**, 9 a.m. - 3 p.m., Buffalo Country Store, 101 8th St. NE, Buffalo; **May 7, 12** - 6 p.m., Preferred Choice Chiropractic, 703 Thielen Drive SE, St. Michael.

### Pioneer Park's 38th Annual Pancake Breakfast

Now that spring is here, Minnesota Pioneer Park is geared up for another wonderful season. Its 38th Annual Maple Syrup Pancake Breakfast is Sunday, **April 19**, from 9 a.m. to 1 p.m. Meal includes: scrambled eggs, sausage, juice, coffee or milk and all you can eat pancakes with freshly-bottled real maple syrup. Minnesota Pioneer Park is located right off Hwy. 55 in Annandale, MN at 725 Pioneer Park Trail.

### Wright County Baby Animal Fair is Sunday

Local churches, businesses, schools, community organizations (including the Buffalo Rotary Club, the Knights of Columbus and the Lion's Club) and individuals are joining together to raise funds for Heifer International, [www.heifer.org](http://www.heifer.org). Since 1944 Heifer International has been dedicated to helping families around the world with the gift of food and income-producing animals and training in their care. In return for this gift of hope, families agree to pass on the first female offspring of their animal to another family in need. The gift keeps multiplying.

Fair goers test their knowledge at the geography and ecology booths and visit the Global Village to discover facts about our world. Admission to the fair is a donation of non-perishable food for the local food shelves. To learn more, visit [www.babyanimalfair.com](http://www.babyanimalfair.com).

### Learn how to compost your garden April 20

Open garden on Monday, **April 20**, at 208 Oak Ave. North, Maple Lake, by the Hwy. 55 stoplights. Compost your garden and learn how to generate a composted, weed-free, life-long garden. See a successful 4'x4' composted in 2013 and planted with seedlings in August 2014 and now getting ready for the 2015 season. Learn to utilize tools to save your back and enjoy healthy food from vegetable gardens. Also, a specialized small-size plant starting system will be demonstrated. The garden opens at 2 p.m. with a 6:30 p.m. presentation. For more information call 320-963-3690.

### Radon and Other Risks Community Forum

On Monday, **April 20**, from 6:30 to 8:30 p.m. at the Buffalo Hospital Medical Office building there will be a community forum about radon, other risks and understanding the environment's role in lung cancer. Learn more about what radon is, why it is harmful, how to test for it, and how to reduce levels in your home. Also learn about the effects of tobacco, pollution, and other environmental hazards. This event is free but registration is requested. Please call 763-684-7025.

### MN Railroads at Cokato Historical Society

The Cokato Historical Society is presenting Steve Glischinski, author of "Minnesota Railroads: A Photographic History, 1940-2012" on **April 21**, 7 p.m., at the centennial room in the library/museum building. This program is free to the public; you do not have to be a historical society member to attend. The 2015 annual meeting of the historical society will precede Glischinski's presentation.

### First-time home buyers seminar is April 22

Wright County residents thinking about buying a home are invited to attend a one day informative workshop designed to help them learn the basics of home ownership. Wright County Community Action (WCCA) offers a first-time home buyer's seminar (Home Stretch) which will cover a variety of topics related to the home buying process. This program is approved to meet the Neighborhood Stabilization Program Requirements and the Minnesota Housing Finance Agency (MHFA) Requirements.

Home Stretch will be offered on Wednesday, **April 22**, from 8 a.m. to 5 p.m. at Trinity Lutheran Church, 449 West Broadway, Monticello, MN 55362. To register, call Wright County Community Action (WCCA) at (320) 963-6500, ext 238.

### 2015 Farm Family of the Year Nominations

Wright County has many outstanding farm families who make very positive contributions to the economic and cultural environment of the county while receiving little or no recognition. Now you have the opportunity to recognize one of these families by nominating them to be the Farm Family of the Year for 2015. Nominees should be actively involved in agriculture with one or more agricultural enterprises or have made significant short term progress and/or innovative contributions with their agricultural endeavors. To nominate a family call the U of M Extension Office of Wright County at 763-682-7381 or send an email to [gred0014@umn.edu](mailto:gred0014@umn.edu). All nominations must be received by **April 23** and a family will be selected May 1.

### Crisis Nursery Spring fundraiser is April 24

The 17th Annual Spring Fundraiser for Crisis Nursery serving Wright County is being held on Friday, **April 24**, from 6:00 to approximately 10 p.m. at the Buffalo Civic Center. Enjoy a delicious BBQ buffet from 6 to 7:30 p.m. that is catered by Red's of Montrose, music, a raffle for dollars, silent auction and the live auction takes place at 7:30 p.m. where they will be auctioning off some "interesting" items and having fun with the audience. To order tickets, donate an auction item, or for more information, contact Jill Gatzke at the Crisis Nursery Office at 763-271-1674. This special event is helping to raise awareness of April as Child Abuse and Neglect Prevention Month.

### Jeff Nothnagel Cancer Benefit is May 9

After a courageous 6 month battle with kidney cancer, Jeff Nothnagel passed away on March 13th. Jeff leaves behind his wife and children who need your support for mounting medical bills and funeral expenses. Please join in celebrating the life of Jeff and help the Nothnagel family at a benefit on Saturday, **May 9**, at the Maple Lake American Legion Club. There will be a pork chop dinner, raffles, silent auction and music. Dinner will be available from 4-6 p.m. and is provided by B & P Catering. Silent Auction will end around 7 p.m. If you would like to make a donation or have questions please contact: Jeremy Nothnagel at 612-369-2930, Jenny Carlson at 763-614-7810 or Sara Stempler at 763-300-2398.

Submit community programs and events to  
[news@maplelakemessenger.com](mailto:news@maplelakemessenger.com)







# Lawn & Garden

**Did you know?**

Damage to a lawn may be indicative of various problems. Everything from insects to rodents to the family pet may be responsible for causing burnt patches, holes and other eyesores. Getting to the bottom of the problem is the first step in remediation. Burning and discoloration of the lawn is often a

result of high concentrations of dog urine pooling in one area. Diluting the urine by hosing down areas of the lawn can clear up many problems. Birds, raccoons, skunks, moles, and other rodents may feed on grubs that reside just under the thatch of the lawn, and animals may tear up lawns in search of this delicacy. Treating the grub problem usu-

ally alleviates damage caused by animals. Mole crickets are another common lawn destroyer. These insects resemble crickets, but they burrow beneath the turf to feed on plant roots. The mole crickets can push up channels of turf as they burrow, exposing roots to the elements and causing the grass to die. Getting rid of the insects can revitalize the lawn.

## A more eco-friendly lawn is just steps away

Maintaining a lush lawn is a healthy and rewarding hobby that affords homeowners to spend some time outdoors in nature. Lawn enthusiasts can make their hobby even healthier by adopting several eco-friendly lawn care strategies that not only make for a healthier lawn, but a healthier planet as well.

Responsible landscaping has grown increasingly popular in recent years, as more and more homeowners are adopting eco-friendly lawn care practices in the same way they have embraced environmentally conscious behaviors in other areas of their lives. The following are a handful of ways lawn care enthusiasts can incorporate eco-friendly practices into their landscaping routines.

- Maintain an appropriate grass height. When temperatures start to peak in summer, homeowners may be tempted to cut their grass as close as possible so they can reduce the number of afternoons they spend riding or pushing a mower in the hot sun. But cutting too low makes the grass increasingly susceptible to infestations and disease, and such problems may need to be remedied with potentially harm-

ful pesticides if no other approach proves effective. Even if it means an extra afternoon or two mowing under the hot sun, maintaining an appropriate grass height can lead to a healthier lawn, as longer grass soaks up more sunlight, allowing it to grow a deep root system that will help a lawn survive drought and other potential problems.

- Cut back on harmful pesticides. Many homeowners now prefer to avoid pesticides at all costs, but sometimes pesticides are a last resort when lawns are falling victim to harmful insects and organisms. Homeowners who want to embrace more eco-friendly lawn care practices can cut back on their use of pesticides, first trying more environmentally friendly options. For example, biopesticides are made from naturally occurring materials, including animals, plants, bacteria, and certain minerals. According to the United States Environmental Protection Agency, biopesticides are often inherently less toxic than more conventional pesticides. In addition, biopesticides typically affect only the pest causing the problem, whereas broad spectrum pesticides may affect sur-

rounding organisms, such as birds and mammals, in addition to the targeted pest. The EPA ([www.epa.gov](http://www.epa.gov)) advises homeowners hoping to use biopesticides first learn about managing pests so they can effectively remedy problems on their properties.

- Harvest rainwater. Lawns need water, especially when temperatures rise in the summer. But watering lawns can have an adverse effect on your community's water supply, draining that supply and hurting the community in the long run. Homeowners who can harvest rainwater can drastically reduce their impact on their community water supply, thereby helping the planet and their community, especially if they reside in locales where water resources are traditionally scarce. When rainwater is harvested, it is collected from downspouts before it washes into nearby sewage systems. Many lawn and garden retailers sell rainwater harvesting systems, which homeowners can install themselves or pay a landscaping professional to install for them.

- Lay mulch down around trees, shrubs and flower beds. Trees, shrubs and flower beds need water, especially in the summer when rising temperatures pose a threat to plants. Homeowners can cut back on the water they use to protect those plants by laying organic mulch in the spring. Organic mulch conserves moisture in soil, promoting stronger roots in plants and helping homeowners cut back on the amount of watering they need to maintain a garden that's both healthy and pleasing to the eye. Organic mulch, which might be made of bark, is also heavy, making it hard for ugly weeds that rob plants of water to thrive.

## Trees need trimming?

### WH Services can help with all of your landscaping needs:

- Tree and stump removal
- Tree and shrub pruning / shaping
- Emerald ash borer treatment
- Storm damage clearing
- Lot clearing



90 day, no-interest financing available

Call today!

(763) 477-3000

[www.whe.org](http://www.whe.org)

**WHSERVICES**

A subsidiary of Wright-Hennepin Cooperative Electric Association

**LAKE CENTRAL**  
INSURANCE SERVICES

**LAKE CENTRAL**  
INVESTMENTS

Providing Insurance for:

- ✦ Home
- ✦ Auto
- ✦ Business
- ✦ Long Term Care
- ✦ Health
- ✦ Life
- ✦ Farm

Providing Services for Your Financial Future:

- ✦ 401K Rollovers
- ✦ Roth IRA
- ✦ Traditional IRA

\*Lake Central Investments is Cetera Investments Services LLC program, member FINRA/SIPC. Cetera Investments Services LLC is unaffiliated with any other name entity.

[www.mylakecentral.com](http://www.mylakecentral.com)

Maple Lake 320-963-3163 • Annandale 320-274-8216  
Clearwater 320-558-2480

## Buffalo Floral & Landscaping

Great Landscaping - Done Right from Concept to OOH!... not Ouch!

FULL SERVICE  
LANDSCAPING &  
IRRIGATION  
DESIGN &  
INSTALLATION

763-682-2010

114 Central Ave. • Buffalo  
Across from the Courthouse  
[www.buffalofloral.com](http://www.buffalofloral.com)

3 Year Guarantee on Plants and Workmanship!

FREE  
ESTIMATES

WEEKLY  
LAWN MOWING  
SERVICES  
AVAILABLE  
CALL NOW!

**Hunter**  
The Irrigation Innovators

## DeZiel Heating & Air Conditioning, Inc.

Call us for all your heating & cooling needs!

763-684-3965

Go ahead, make yourself more comfortable!

AC Tune-Up Special:  
**\$49.00**



## Butterfly Gardens Flower Mart

Opening April 24th!

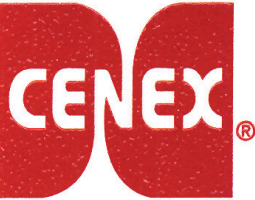
Weather Permitting

Monday - Saturday 8 a.m. - 8 p.m. • Sunday 8 a.m. - 7 p.m.

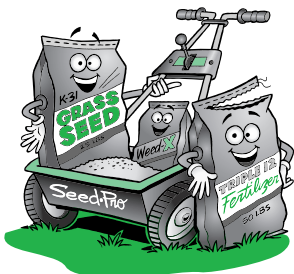
Located in Cenex-Lake Region Co-op Parking Lot • Maple Lake

Hanging Baskets • Veggies • Bedding Plants  
Perennials • Specialty Annuals • Garden Decor

Family Owned, Locally Grown



Cenex-Lake Region Co-op  
Hwy. 55 • Maple Lake  
320-963-6074



Check Out Our Lawn & Garden Department!

Insect Control Chemicals  
Broad Leaf Weed Control Products  
Veggie Seeds • Potting Soil  
Grass Seed • Mulch  
Lawn & Garden Fertilizer  
Garden Decor • Wind Chimes

**Hydrothol 191**

We handle a full line of Aquatic Chemicals  
for lake & shore maintenance

community  
lawn care

Supporting Your Community  
One Lawn at a Time



5% of your purchase supports  
the Maple Lake Library!



- CRABGRASS CONTROL • FERTILIZER & WEED CONTROL •
- TREE & SHRUB FEEDING • MOWING • SPRING & FALL CLEANUP •
- EMERALD ASH BORER CONTROL • APPLE & CRAB APPLE SPRAYING •
- CHRISTMAS & EVENT LIGHTING •

Call for FREE estimates & spring/summer scheduling  
(763) 286-6303  
[www.centrasota.com](http://www.centrasota.com)

A division of Centra Sota Cooperative

**Sold Here!**

**Available FUELS:**

- Non-Oxygenated Premium for Boats, Classic Cars & ATVs.
- E-85
- E-15, E-30, E-50
- Diesel

**PIZZA CORNER**

**320-274-2556**

50 Elm Street East  
Annandale

**CENEX**

Locally Owned





**BRING PREMIUM TO YOUR LAWN**



REGENT™ BROADMOOR™ CONQUEST™ LEGACY XL™

**Visit your local dealer & test drive one today!**

**Kramer Sales & Services**  
610 Oak Ave. N • Maple Lake • 320-963-3733

\*Consider terrain, slope and grass conditions in selecting proper operating speed. Results of Suspension Comfort System™ depend on grass/yard conditions.



**Country Fest 2015**  
Cadott, WI  
June 25 - 28

**Auto Value Parts Stores**

Enter our Sweepstakes to win  
**FREE** tickets to Country Fest 2015!  
\*See Store for Details\*



**Auto Value**  
Parts Stores

**Annandale Parts Supply**  
**320-274-8284**  
Hwy. 55 • Annandale  
Locally Owned and Operated  
Mon. thru Fri. 7:30-5:30 • Sat. 8-2

**SAFETY FIRST** Bosch UltraStop Premium Brake Pads



**\$24.99** Per Axle

**Trailer Bearing Kits**  
1" Trailer Bearing Kit (#871)  
1 1/4" Trailer Bearing Kit (#872)  
1 1/8" Trailer Bearing Kit (#873)



**ONLY \$10.49**

**3.5 Ton Low Profile/Rapid Lift Floor Jack**  
Colors may vary



**\$199.99**

**Super Concentrated Car Wash**



**\$3.99**

**Engine Tune-Up**



**\$6.99**

**Jet-Black®**  
World's Most-Beautiful Driveways

**Rated #1** by Entrepreneur Magazine

1987 - 2015  
Celebrating 28 Years of Excellence

Residential---Townhomes---Commercial

Sealcoating  
Crack Repair  
HEAT-Treat Oil Spots  
Power-edge Grass  
Patch Work

Call for **FREE** Estimate Today!

**763.432.9090**  
[www.Jet-Black.com](http://www.Jet-Black.com)

Independently Owned & Operated • Satisfaction Guaranteed • Fully Insured

**Carefree LAWN**

Metro Area: (612) 588-4000  
Maple Lake Area: (320) 963-2178

**Sprinkler System Installation & Service**  
[www.CarefreeLawnMN.com](http://www.CarefreeLawnMN.com)

**Yard by Yard**  
Garden & Landscape Design

**Shelly Liljequist**

(612) 719-9891  
Maple Lake, MN 55358  
[www.yardbyyardgarden.com](http://www.yardbyyardgarden.com)

- Consultations
- Design Services
- Installations
- Maintenance

**JKLANDSCAPE CONSTRUCTION LLC**

**A Complete Design & Build Company**

Landscape Design, Retaining Walls, Paver Patios/Walkways/Driveways, Decks, Pergolas and Gazebos, Landscape Lighting, Hydro Seeding, Lakeshore Renovation, Water Features, Outdoor Living

**"Turning Dreams Into Reality"**

Clearwater, MN • 320-980-2710 • [jklandscape.com](http://jklandscape.com)

**Dingmann MARINE AND MORE LLC**

**Our Business is Boats!**  
Are you ready for Spring?  
We do Spring tune-ups!

**SERVICING:** Boats & Motors, ATVs, Watercraft & Snowmobiles

Service & Repair

1100 Business Boulevard • In the Annandale Business Park  
**320-274-8688 • [dingmannmarine.com](http://dingmannmarine.com)**

**Sticks & Stones Inc.**  
LANDSCAPE AND TREE SERVICE

- Lakeshore Restoration • Patio & Walls
- Driveways • Water & Fire Features
- Drainage Solutions • Firewood
- Fertilization & Weed Control
- Hauling & Bobcat Work

**Office: 320-274-6853**  
Quote@sticksandstonesmn.com  
[www.SticksAndStonesMN.com](http://www.SticksAndStonesMN.com)

*We wear our boots out for you!*

**AMERICAN Mini Storage, LLC**

**Spring Cleaning & Organizing?**  
We have the extra space you need!

Moving Boxes & Storage Supplies For Sale  
We rent Tables & Chairs!

Maple Lake & Annandale Locations  
**320-274-SHED (7433)**  
[www.aministorage.biz](http://www.aministorage.biz)

**KAZ Hardware & Rental Center**

For All Your Rental Needs...  
Stop in or Call Today!

**"Your Hometown Hardware Store"**

valspar

Rental • Hardware • Housewares  
Tools • Plumbing • Paint • Electrical  
Lawn & Garden • Saw Sharpening  
Window & Screen Repair

Main Street • Annandale  
**320-274-5214**

**Don't cut into your weekend time mowing, cut your mowing time and enjoy your weekend.**

**HUSTLER**

**Starting at \$2900**

**HUSTLER RAPTOR**



**Spread the Word...**  
**Maple Lake's RECYCLE!**

**Appliance Recycling Day**

It's Your Chance to Dispose of Items at a Minimum Cost  
**Saturday, May 16**  
**9 a.m. to 1 p.m.**

**\$5 Per Household Appliance**  
Includes: refrigerator, freezer, water heater, range/stove, washer, dryer, dishwasher, trash compactor, garbage disposal and air conditioners.

Computers & TV Sets: \$20 Each • Microwaves: \$10 Each

**\* NOT ACCEPTING Sulfur Dioxide (SO-2) or Gas Ammonia Refrigerators**  
We cannot accept glass, paint, liquids, carpeting, wood or burnable materials, food, debris, water softeners, mattresses, humidifiers, de-humidifiers or hazardous waste.

**• ADDITIONAL CLEAN-UP ITEMS •**

\$2.....13-15" Car Tires (on/off rim)	FREE .....Batteries
\$8.....16-17" Car Tires (on/off rim)	FREE .....Scrap Metal
\$15.....Truck Tires (off rim)	FREE .....Motor Oil
\$25.....Tractor Tires (off rim)	<b>* NO ANTIFREEZE</b>

**NO ITEMS WILL BE ACCEPTED BEFORE OR AFTER SCHEDULED HOURS.**

The City Maintenance Shop  
441 Oak Avenue South  
Maple Lake

All Wright County residents are invited to participate in this cleanup.

Sponsored by the  
**City of Maple Lake**

**Join Maple Lake for the All City Garage Sale & 125th Anniversary Celebration on June 6th, 2015!**



**Season's BIGGEST Savings!**

**J&J MARINE Inc.**

14882 Hwy. 55 • South Haven, MN  
**320-236-3625**  
[www.ijmarineinc.com](http://www.ijmarineinc.com)

**"We Rock The Boat!"**




**MAPLE LAKE LUMBER CO.**

**We Cut Residential Keys!**

**6 Foot Deluxe Folding Table**  
**\$34.99**

- Polypropylene top folds in half for storage
- Steel frame with powercoated finish
- 30" x 72" • Includes carry handle 64000

**Hefty Trash Bags**  
**\$6.99**

Reg. \$8.99 Features drawstring top and Odor Block technology

**Fiskars 2 pc. Lopper/Pruner Tool Set**  
**\$19.97**

- Cuts Cleanly • Comfort-grip handles
- Hardened steel nonstick blades



**Stop in & look at our Composite Decking display! Redwood Decking is back!**



New Home • Remodeling • Garage • Pole Building  
**320-963-3612**  
120 Oak Ave. S • [www.MapleLakeLumber.com](http://www.MapleLakeLumber.com)  
Monday - Friday: 7 a.m. - 5 p.m.  
Saturday: 8 a.m. - Noon • Sunday: Closed



# Sports

## Irish softball wins opener

**By Brenda Erdahl  
Sports Writer**

The Maple Lake softball team kicked off its season on Friday, April 10, with a 4-0 win over the Annandale Cardinals.

The Irish were supposed to start the season on Tuesday, April 7, in Litchfield, but the game was postponed due to weather and will be made up on Wednesday, April 29, at 3:30 p.m.

Maple Lake went into Friday night's opener expecting an exciting match-up with the neighboring rival.

"Annandale is always a tough team to go up against," Irish coach Tim Knudsen said. "They play in a very competitive conference, they have a good young pitcher and they are coached very well."

After three scoreless innings the Irish got hot in the fourth, driving in two runs to take the lead. They scored two more in the sixth and the Cardinals didn't answer, surrendering the win to the Irish.

Maple Lake pitcher Kennedy Haney nearly tossed a perfect game. She threw a no-hitter and struck out seven. Only one hitter reached the base on an error.

"Our infielders played flawlessly," Knudsen said. "No balls made it to the outfield."

Defensively the Maple Lake girls played very well and in the

circle, the coached added, noting that their biggest mistake in this early season game was leaving too many runners in scoring position.

"We must work on being better situational hitters," he said.

The win was a great way to kick off the season for the Maple Lake squad. This week they were to face off against Rockford at home on Monday, April 13. The Rockets have been to the state tournament the last two years in a row and have one of the top pitchers in the state in Bria Majeski.

"It should be a pitcher's duel and a fun game to watch," Knudsen said before the game.

Last year the Irish split with them, winning 8-4 and losing 3-2.

Then on Tuesday, April 14, the Irish were to host Kimball, an up-and-coming team that has improved tremendously over the last two years, Knudsen said.

### Maple Lake vs. Annandale

	Run	Hit	RBI
A. Klug	1	1	-
S. Knudsen	1	1	2
C. Callahan	-	1	1
L. Rachel	-	1	-
E. Webb	1	1	-
M. Scheiber	-	-	2
T. Pilger	1	1	1
B. Ankerfelt	-	1	-

**Final Score: 4-0**

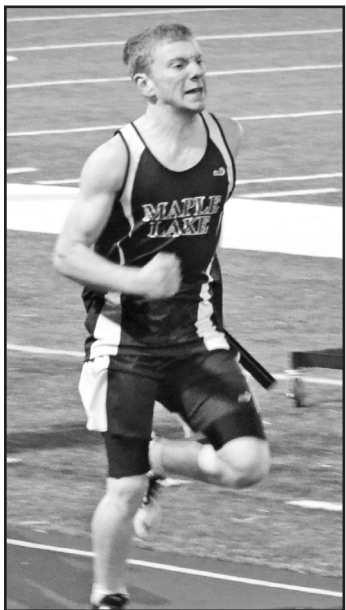
## Irish track off to a good start three meets in

**By Brenda Erdahl  
Sports Writer**

The Maple Lake track team is off to a good start after three meets. The Irish kicked off the season at the Tootsie Pop Invite in Monticello, on Tuesday, March 24.

Although team scores were not kept at this early meet, the boys team came away with two first-place finishes and the girls tallied up three.

Ryan Kalinowski won the 400-meter dash on the boys' side



**Austin Stuefen in the 4 x 400m relay at Rockford. It was his first time running that race and he passed a runner for the win.**

and the Irish 4x600-meter relay team claimed top honors. The boys also had several second- and third-place finishes.

Brielle Paumen won the 55-meter dash, Brynn Paumen won the long jump and Catie Fobbe won the shot put.

Results were not available for the Rockford meet on Tuesday, April 7, but on Friday, April 10, the Maple Lake teams traveled to Norwood-Young America for the Chuck Halliday Meet.

Both the girls and boys teams finished first out of six teams.

The girls dominated the meet with five first-place finishes from: the 4x800-meter relay team; Catie Fobbe in the shot put; Brynn Paumen in the long jump and high jump; and the 4x400-meter relay team.

The boys claimed seven individual wins: the Maple Lake 4x800-meter relay team cruised to a win; Andrew Schonnesen won the long jump, the high jump and the triple jump; Alex Hausladen won the 300-meter hurdles and the 4x100; and 4x400-meter relay teams won their races.

The Irish will compete again on Thursday, April 16, at Howard Lake-Waverly-Winsted and on Monday, April 20, they will host a meet at 4 p.m.

**Tuesday, March 24, Tootsie Pop Invite at Monticello**

**Boys results:** 400-meter dash - 1.



**Charlie Stejskal jumping hurdles at the Rockford meet on April 7th.**

**(Photos by Chris Fobbe)**

Ryan Kalinowski, 57.36; 5. Willard Jackson, 58.59; 800-meter run - 5. Devin Deringer, 2:21.74; 2,000-meter run - 5. Dan Miller, 6:43.34; 4x200-meter relay - 3. Maple Lake 1:50.27; 4x300-meter relay - 3. Maple Lake, 2:44.36; 4x600-meter relay - 1. Maple Lake, 6:09.05; high jump - 2. Andrew Schonnesen, 5-foot, 10-inches; 3. Charlie Stejskal, 5 feet, 6-inches; 4. Henry Stecker, 5 feet, 4 inches; pole vault - 3. Jordan Scott, 10 feet, 6 inches; long jump - 2. Schonnesen, 20-feet, 5 inches; 3. Stejskal 18 feet, 7.5 inches; triple jump - 3. Scott, 37 feet, 5.5 inches; 4. Stejskal, 35 feet, 9 inches.

**Girls results:** 55-meter dash - 1. Brielle Paumen, 8.12; 5. Callie Lefave, 8.36; 400-meter dash - 2. Grace Heying, 1:10.26; 3. Paumen, 1:10.27; 4. Sommer Carlson, 1:10.57; 800-meter run - 5. Mollie Graham, 3:06.05; 4x200-meter relay - 4. Maple Lake, 2:06.39; 4x300-meter relay - 3. Maple Lake, 3:23.05; 4x600-meter relay - 2. Maple Lake, 8:22.07; high jump - 2. Brynn Paumen - 5 feet; 4. Sara Simonette, 4 feet, 8 inches; 4. Mackenna Brown, 4 feet, 8 inches; long jump - 1. Brynn Paumen, 15- feet, 7.5 inches; Brielle

Paumen, 14 feet, 2.5 inches; shot put - 1. Catie Fobbe, 31 feet, 7.5 inches.

**Friday, April 10, Chuck Halliday Meet at Norwood-Young America**

**Girls results:** 4x800-meter relay - 1. Maple Lake, 11:25.35; 100-meter hurdles - 4. Grace Thiele, 19:54; shot put - 1. Catie Fobbe, 32 feet, 7.5 inches; 100-meter dash - 2. Brielle Paumen 13.51; 4. Callie Lefave, 14.16; long jump - 1. Brynn Paumen, 14 feet, 5 inches; 2. Brielle Paumen 14 feet., 1.5 inches; high jump - 1. Brynn Paumen, 5 feet; 2. Emily Webb, 4 feet, 10 inches; 4. Mackenna Brown, 4 feet, 8 inches; 1,600-meter run - 2. Sommer Carlson, 6:09.68; 4x100-meter relay - 2. Maple Lake, 56.71; 400-meter run - 3. Webb, 1:09.41; 5. Grace Heying, 1:10.67; discus - 4. Fobbe, 7 feet, 11 inches; 300-meter hurdles - 2. Paumen, 53.60; 4. Graham, 56.64; 800-meter run - 3. Carlson, 2:49.63; 3,200-meter run - 3. Halle Geyen, 13:27.09; triple jump - 2. Brynn Paumen, 30 feet, 4 inches; 5. Brown, 29 feet, 2.5 inches; 4x400-meter relay - 1. Maple Lake, 4:41.28.

**Track**  
continued on page 9

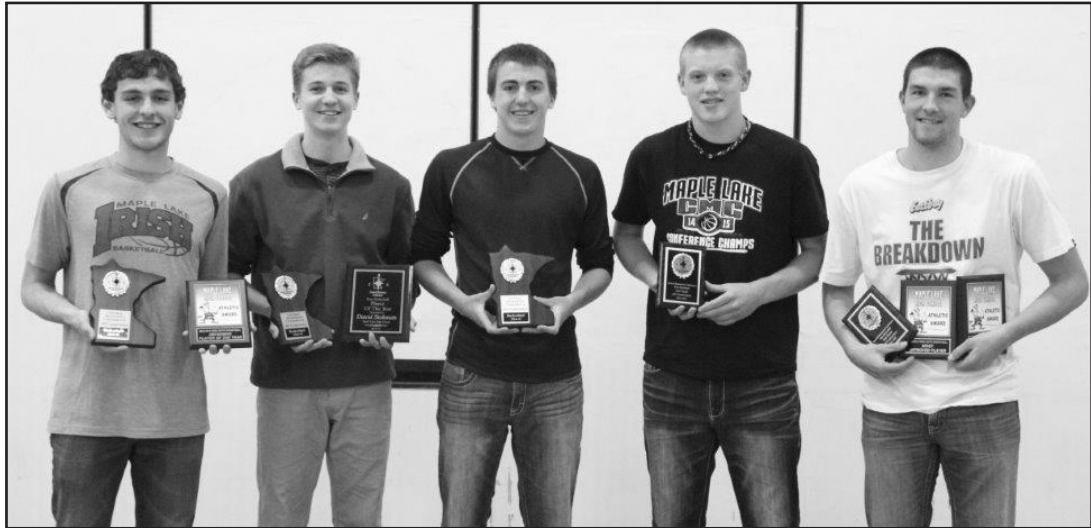
## Four awarded at girls basketball banquet



**Morgan Scheiber, Hardest Worker; Lindsey Rachel, 1st Team All-Conference and Defense Player of the Year; Kayla Hoistad, Offensive Player of the Year, 2nd Team All-Conference and Most Improved Player; Emily Webb, Offensive Player of the Year and 2nd Team All-Conference.**

(Photo by Mollie Graham)

## Five awarded at boys basketball banquet



**Andrew Schonnesen, 1st Team All-Conference and Defensive Player of the Year; David Stokman, 1st Team All-Conference and CMC Player of the Year; Tony Goelz, 1st Team All-Conference; Brandon Borell, 2nd Team All-Conference; Chase Olson, 2nd Team All-Conference, Hardest Worker and Most Improved Player**

(Photo by Charlene Wurm)

## Stokman presented with Irish jersey



**Coaches Tim Staloch and Casey Pack presented David Stokman with his Irish jersey for breaking the school record of most points scored during a high school career with 1,694 points. Also, Coach Staloch was voted Conference Coach of the Year and Casey Pack was voted Assistant Coach of the Year by the Central MN Conference.**

(Photo by Charlene Wurm)



## The Catch

by Jeff Plattner

### Introducing Jeff Plattner

Growing up in the small town of Gary, MN (pop. 200), it didn't take long for sports to become a big part of my life. Whether it be playing with friends outside (which sometimes included shoveling snow off the neighborhood basketball court on a sunny winter day, to get up some extra shots) or watching on TV, I was passionate at an early age. As a fan, some of my earliest memories include watching my sister drop a Bo Jackson home run ball at the Metrodome (unbelievable, it was right in her glove), seeing the Gary Bulldogs fall two points shy of becoming the smallest school in Minnesota to ever make the boys state basketball tournament, and watching my beloved Notre Dame Fighting Irish on Saturday afternoons. They were always on

TV, which I'm guessing is why, at the age of 5, I gravitated to them quickly. Throughout the years, as I've grown, many things have changed in my life, but one constant has always remained...my absolute love for sports. It's only fitting that I was born in March. What a fantastic month for a sports fan with NCAA March Madness, NFL free agency, MLB spring training, etc.

My name is Jeff Plattner, a Bemidji State alum now living in Maple Grove, MN. I work in Analytics for a local company. Other than being a sports nut, I'm also a son, brother (one bro, one sis), uncle (one nephew, twin nieces), husband, and as of December 23rd, 2014, a father to the most adorable little girl I've ever met! I'm fortunate enough to have been given the opportunity to share my love

for, not only sports, but also writing, with you. And over the coming months, although you may not always agree with my take on the subject at hand, I hope you enjoy reading my column and look forward to it each week. Getting things going this week, is a rhyming, limerick-like preview of Major League Baseball's American League. Enjoy!

### MLB: 2015 American League Preview

#### American League West

#### Seattle Mariners: 93-69\*

It's time King Felix takes M's to top,  
Cano, Cruz, Seager have big-time pop;  
Division not won,  
Since 2001,  
Fifteen years later, cream of the crop?  
**Los Angeles Angels of Anaheim: 89-73\***  
Trout is a monster, best in the game,  
Pujols and Hammy can't pull up lame;

Young pitching with flare,  
The bullpen is fair,  
But the Halos glow won't be the same.

#### Texas Rangers: 77-85

2014 was a horror show,  
Not what the Rangers have come to know;  
Too many what-ifs,  
Turn out to be stiff,  
And past injuries will start to show.

#### Houston Astros: 75-87

Enough is enough losing gets old,  
Few years away, farm system is gold;  
Last year they stepped in,  
The right direction,  
Stros get warmer before they get cold.

#### Oakland Athletics: 74-88

Billy Beane's gone mad and sold the farm,  
Few bats remain and barely an arm;  
When used right, Moneyball,  
Helps them ball into fall,  
But this time Beane has only done harm.

**The Catch**  
continued on page 9



## This week's Maple Lake Irish activities

**Thursday, April 16:**

4:00pm Softball: 7th Grade Game  
Lester Prairie/Holy Trinity @ Lester  
Prairie City Park; 4:00pm

Softball: 8th Grade Game Lester  
Prairie/Holy Trinity @ Lester Prairie  
City Park; 4:00pm Track & Field:  
Varsity Invitational Howard Lake-  
Waverly-Winsted @ Howard Lake-  
Waverly-Winsted H.S.; 4:15pm  
Golf:Boys Varsity CMC Inv Bel-  
grade-Broten-Elrosa, Howard  
Lake-Waverly-Winsted, Kimball  
Area, Osakis., Pierz Healy, Rock-  
ford Area Schools District vs. Kim-  
ball Area @ Kimball Golf Course;  
4:30pm Baseball: 7th Grade Game  
vs. Lester Prairie/Holy Trinity @  
Bolduan Park  
**Friday, April 17:**

9:00am Speech: Varsity State  
Tournament TBA vs. Lakeville  
North @ Lakeville North High  
School; 4:00pm Baseball: 8th  
Grade Game Rockford Area  
Schools District @ Rockford Mid-  
dle School; 4:00pm Baseball: 7th  
Grade Game Rockford Area  
Schools District @ Rockford Mid-  
dle School; 4:00pm Softball: 7th  
Grade Game vs. Rockford  
Area Schools District @ Maple  
Lake High School; 4:00pm  
Softball: 8th Grade Game vs.  
Rockford Area Schools District @  
Maple Lake High School; 4:30pm

Baseball: JV Game vs. Zimmer-  
man @ Irish Diamond #3; 4:30pm  
Baseball: Varsity Game vs. Zimmer-  
man @ Irish Stadium  
**Monday, April 20:**  
4:00pm Track & Field: Varsity In-  
vitational vs. Belgrade-Broten-El-  
rosa, Howard  
Lake-Waverly-Winsted, Maranatha  
Christian Academy, Math & Sci-  
ence Academy, Rockford Area  
Schools District, Saint John's  
Prep, West Lutheran, Lester  
Prairie/Holy Trinity @ Maple Lake  
High School  
**Tuesday April 21:**

4:15pm Baseball: 8th Grade Game  
Eden Valley-Watkins @ Eden Val-  
ley-Watkins High School; 4:15pm  
Baseball: 7th Grade Game Eden  
Valley-Watkins @ Watkins City  
Softball Field; 4:15pm  
Golf:Boys Varsity CMC Inv Bel-  
grade-Broten-Elrosa, Howard  
Lake-Waverly-Winsted, Kimball  
Area, Osakis., Pierz Healy, Rock-  
ford Area Schools District vs.  
Howard Lake-Waverly-Winsted @  
ShadowBrooke Golf Course;  
4:15pm Softball: 7th Grade  
Game vs. Eden Valley-Watkins @  
Maple Lake High School; 4:15pm

Softball: 8th Grade Game vs. Eden  
Valley-Watkins @ Maple Lake  
High School; 4:30pm  
Baseball: Varsity Game vs.  
Howard Lake-Waverly-Winsted @  
Maple Lake High School; 4:30pm  
Baseball: JV Game vs. Howard  
Lake-Waverly-Winsted @ Maple  
Lake High School; 4:30pm Soft-  
ball: Varsity Game Howard Lake-  
Waverly-Winsted @ Howard  
Lake-Waverly-Winsted High  
School; 4:30pm Softball: JV Game  
Howard Lake-Waverly-Winsted @  
Howard Lake-Waverly-Winsted  
High School



# School



A writing program featuring young writers from Maple Lake Elementary School, coordinated by Senior Connections.

*Tai Skay had her 1st grade students write Acrostic poems describing what the word spring means to them.*

**Seth Gage** - Morton Spring  
Pie Rainbow Icy, New life, Great

**Gavin Manthie** - Spiders coming out, Plants growing, Rabbits coming out, Icicles melt, New Life, Gardens grow.

**Alana Weiss** - Skunk, Pie, Raccoon, Icicles melting, Night, Great

**Brynn Ortiz** - Super, Pie, Rainbow, Icy, New life, Great

**Grace Ronnenberg & Carly Frost** - Squirrels on stumps, Playing in puddles, Rain & Rabbits, Icy icicles, New baby animals, Good & Great

**Allie McClory** - Snow melting, Plants growing, Rabbits coming out, Icicles melting, New babies, Good smells

**Santiago Castro** - Spiders, Plants growing, Rabbits coming out, Icicles melting, New life, Gardens growing

**Alyxis Strzyzewski** - Snow melting, Pie, Rain, Icicles melting, New baby animals, Good

**Katherine Froemming** - Sun Shine, Perfect, Running,

Icecream, New frogs, Good times

**Olivia Jerome** - Snow melting, Pie, Run, Icicles melting, New baby animals, Good

**Kody Uecker** - Snow melting, Play, Riding bikes, Icicles melting, New baby animals, Great

**Joey Novotny** - Sports, Pie, Raccoons, Icicles melting, Night, Good

**Ryne Lodermeier** - Sunny skies, Popcorn, Rainy, Icecream, Night Crawlers, Good

**Carter Haflich** - Skunk, Pie, Raccoon, Icicles melting, Night, Great

**Hayden Dircks** - Sunny skies, Popcorn, Rain, Icicles melting, Night crawlers, Good

**Nicholas Hughes & Tyler Halloran** - Sunshine, Puddles, Rabbits, Insects, Night crawlers, Go bike riding.

**Remington Daluge** - Snow melting, Plants growing, Running, Ice melts, New babies, Good

**Sam Purcell** - Spring, Puddles, Ride bike, I love spring, Night, Good

**Danny Reilley** - Sunshine, Perfect, Running, Icecream, New frogs, Good times

## Track

continued from page 8

**Team scores:** 1. Maple Lake 165; 2. Watertown-Mayer 89; 3. SE 82; 4. Norwood-Young America 71; 5. Howard Lake-Waverly-Winsted 67; 6. STC 41.

**Boys results:** 4x800 relay - 1. Maple Lake, 8:50.2; 110 hurdles - 2. Charlie Stejskal 17.04; 5. Aaron Reese, 18.16; 100-meter dash - 2. Henry Stecker 12.17; 5. Ben Triplett, 12.37; 4x200-meter relay - 2. Maple Lake, 1:44; long jump - 1. Andrew Schonnese, 18 feet, 1.5 inches; 5. Jason Webb, 16 feet, 9 inches; 4x100-meter relay - 1. Maple Lake 48.41; 400-meter

run - 2. Ryan Kalinowski, 53.47; discus - 3. Tanner Schmid, 109 feet, 5 inches; 300-meter hurdles - 1. Alex Hausladen, 44.59; 2. Stejskal, 44.80; 800-meter run - 5. Jackson Willard, 2:24.05; high jump - 1. Schonnese, 6 feet, 4 inches; 3. Stejskal, 6 feet; 5. Stecker, 5 feet, 8 inches; 4x400-meter relay - 1. Maple Lake, 3:44.40; triple jump - 1. Schonnese, 38 feet, 5 inches; 2. Scott Jordan, 38 feet, 5 inches; 4. Stejskal, 36 feet, 8 inches.

**Team scores:** 1. Maple Lake 149; 2. Howard Lake-Waverly-Winsted 94; 3. Norwood-Young America 90; 4. Watertown-Mayer 73; 5. STC 61; 6. SE 59.

## The Catch

continued from page 8

### American League Central

**Kansas City Royals: 91-71\***

First playoffs since Nintendo was hot,

Wait that long again, Royals think not;

A blossoming core,

Bullpen shuts the door,

Playoffs, they could again stir the pot.

**Chicago White Sox: 87-75**

Tigers, Royals in Chicago's sights,

Offseason moves to the fan's delight;

Chris Sale is cash,

Abreu will mash,

The Central race is sure to be tight.

**Detroit Tigers: 87-75**

They've owned the Central for four years straight,

But no rings for this group that is great;

With Scherzer now out,

Will pitching be stout,

Or winning it all not Tigers fate?

**Cleveland Indians: 84-78**

Cy Young winner was Corey Kluber,

Brantley does it all, not a goober;

Perhaps they lost pace,

With teams they will chase,

So year will be good, but not uber.

**Minnesota Twins: 71-91**

Four years to go of overpaid Joe,

Fans eager to see Buxton, Sano;

The future looks bright,

But not overnight,

Will wins pile up like Mauer's dough?

**American League East**

**Boston Red Sox: 92-70\***

Worst to first once again for the

Sox?

With Panda and Hanley, lineup rocks;

Youngsters bring swagger,

Big Papi the daggers,

With good health, to win East, Sox are locks.

**Toronto Blue Jays: 89-73\***

Longest dry spell of twenty-one years,

Joey Bats and E5, pitcher's fears;

They crush the long balls,

To Niagara Falls,

World Series, eh! Canada cheers.

**Baltimore Orioles: 82-80**

Tough to lose Cruz, the loss leaves a bruise,

Jones is a stud, but would need to use;

An MVP year,

For the ship to steer,

Deep into fall, else O's have the blues.

**Tampa Bay Rays: 76-86**

Maddon was gone, seemed like an hour,

Rays' direction quickly went sour;

The pitching is good,

Unlike the Rays wood,

Which will lack some serious power.

**New York Yankees: 75-87**

ARod's a con, self-righteous cheater,

The Captain's gone, Yankees miss Jeter;

This year won't be stellar,

Could end in the cellar,

Haters will say, couldn't be sweeter.

AL Cy Young: Felix Hernandez (Seattle Mariners)

AL MVP: Mike Trout (Los Angeles Angels of Anaheim)

AL Rookie of the Year: Rusney Castillo (Boston Red Sox)

ALCS: Seattle over Boston 4-3

*\*denotes playoff team*

## District 881 Menus

### Breakfast

**MONDAY, April 20**

Sausage breakfast pizza (elem. and high school), sausage & cheese biscuit or choice of WG cereal, WW toast, jelly/margarine, vegetable selection, fresh fruit, milk

**TUESDAY, April 21**

WG French toast sticks w/syrup, tri-tator (elem. and high school), WG waffle sticks w/syrup, tri-tator or sausage n' egg-wich or choice of WG cereal, WW toast, jelly/margarine, vegetable selection, fresh fruit, milk

**WEDNESDAY, April 22**

Breakfast burritos (elem. and h.s.), breakfast pizza or choice of WG cereal, WW toast, jelly/margarine, vegetable selection, fresh fruit, milk

**THURSDAY, April 23**

Yogurt with fruit & homemade granola (elem. and h.s.), ham n' egg-wich or choice of WG cereal, WW toast, jelly/margarine, vegetable selection, fresh fruit, milk

**FRIDAY, April 24**

Long john (elem. and h.s.), egg n' cheese bagel or choice of WG cereal, WW toast, jelly/margarine, vegetable selection, fresh fruit, milk

### Lunch

**MONDAY, April 20**

Asian chicken salad or hot ham & cheese on WG bun, chicken & penne, garlic breadstick; asparagus, cucumber slices, tomatoes; choice of fruit, milk

**TUESDAY, April 21**

Crispy chicken wrap or cheese calzini w/marinara, hamburger on WG bun; glazed carrots, broccoli florets, peas; choice of fruit, milk

**WEDNESDAY, April 22**

Turkey sub or chicken patty on WG bun w/WG pasta, meat balls & gravy w/WG pasta; corn, baby car-

rots, cauliflower; choice of fruit, milk

**THURSDAY, April 23**

Honey-mustard ham wrap or turkey ala king over rice, whole wheat bread, chicken nuggets, brown rice, WW bread; broccoli, celery sticks, cherry tomatoes; choice of fruit, milk

**FRIDAY, April 24**

Crispy chicken salad or sloppy Joe on WG bun, homemade cheese bread w/marinara sauce; baked beans, baby carrots, cauliflower; fresh fruit, milk

## Automotive DIRECTORY

**BLIZIL'S**  
Repair, Inc.  
963-3518

Hwy. 55 West Maple Lake Tom Blizil, Prop. Transmission Flushes Now Available!  
HOURS:  
Monday-Thursday: 8 a.m.-5p.m.

See Tom for all your auto & truck maintenance needs!

**Andy's PRO TIRE & AUTO**  
Complete Auto Repair  
State of the art 4 wheel alignment equipment  
Hwy. 55 • Annandale • andysprofire.com

Alignment & Brakes Cooper Tires AutoCare Center ASE Damage Free Towing

**Annandale • 320-274-3986**

**WRIGHT WSC**  
SERVICE CENTER, INC.

- Construction Equipment
- Truck & Trailer Repair
- DOT Inspection Center
- Tractors
- Engine Rebuilding
- Hydraulic Hose Repair
- Air & Hydraulic Tool Repair
- Welding
- Machine Shop

**320-963-2470**

500 Cty. Rd. 37 E Maple Lake  
Open 6 a.m. to 7 p.m. • Monday-Friday

**M&M EXPRESS**  
CAR CARE CENTER

- ASE Certified Auto Repair
- Complete Lube Center
- Tire Sales & Repair
- Any Vehicle Make or Model
- Friendly Knowledgeable Staff
- All technicians average 20 years experience
- No appointment necessary

520 Division St. W. Maple Lake, MN  
**320-963-2060**

Get your business noticed weekly in the Messenger!

maplelakemessenger.com

## Sales & Service DIRECTORY

**Kramer Sales & Services**  
Simplicity • Snapper • Lawn & Snow Equipment  
Commercial & Residential  
efco® Chainsaws & Trimmers  
Welding • Repairs • Chain Sharpening  
Your Professional Full Service Power Equipment Retailer  
Monday-Friday: 8-5:30 • Saturday 8-1 • 610 Oak Avenue N. • Maple Lake  
320-963-3733 or 320-963-5858

**Vonco** Waste Management Campuses

**Solid Waste Disposal Services Including:**

- Industrial Waste
- Foundry & General Manufacturing Wastes
- Construction & Demolition Waste
- Sludges & Ash

SERVING MANUFACTURING, INDUSTRIAL & COMMERCIAL CLIENTS

763-262-8662 VONCOUSA.COM | LOCATIONS: BECKER, DULUTH

**GRINNELL MUTUAL**  
REINSURANCE SINCE 1909  
**Ryan Zylstra**

**Zylstra Insurance Agency**

9571 Endicott Ave. NW Maple Lake  
(320) 963-5859  
Fax: (320) 963-3748  
Home • Farm • Auto Rec Veh • Business

"A Policy of Working Together"

**Cokato and Grinnell Mutual Ins. Co.**

Home • Auto • Farm • Business  
Fire • Wind • Liability

**Ryan Zylstra**  
**320-963-5859**

The Maple Lake **MESSENGER**

We print almost anything!

Copies • Inserts  
Flyers • Posters  
Invitations • Postcards  
Business Cards  
Letterheads & More!

Same day copies available!

For price quotes  
Contact us at  
**320-963-3813**  
ads@maplelakemessenger.com  
maplelakemessenger.com

## Professional DIRECTORY

**Buffalo Clinic**  
Taking Care of Our Community

**Office Hours:**  
Mon.-Thurs.: 8 a.m. - 8 p.m.  
Fridays: 8 a.m. - 5 p.m.

**Urgent Care:**  
Mon.-Fri.: 1 - 8 p.m.  
Sat.-Sun.: 8 a.m. - 4 p.m.

(763) 682-1313 for appointments, call:  
(763) 684-3600

1700 Highway 25 North Buffalo, MN 55313  
www.buffaloclinic.com  
www.monticelloclinic.com

**Primary Services**

- Family Practice
- Internal Medicine
- Pediatrics
- OB-GYN
- General Surgery
- Chiropractic/Acupuncture

**Specialty Services**

- ENT, Head & Neck Surgery
- Urology
- Orthopedic Surgery
- Ophthalmology
- Gastroenterology
- Neurology
- Cardiology

**Maple Lake Chiropractic Clinic**  
121 Division Street West • Maple Lake  
**320-963-6003**

**Hours for Dr. Shinabarger**  
Tuesday & Thursday  
Noon to 7 p.m.

**Hours for Dr. Kisner**  
Mon., Wed., Fri.: 1-6 p.m.  
Saturday: 10 a.m. to Noon

To provide patients with optimal care and service, Dr. Shinabarger & Dr. Kisner are available additional hours at:  
**Crow River Chiropractic Clinic of St. Michael**  
(763) 497-4499 • Colonial Mall

**Buffalo Eye Clinic**

- Medical Eye Exams • Contact Lenses
- Full Service Optical Dept. • Cataract Surgery
- Glaucoma • Dry Eye Therapy • Eye Lid Surgery

**Rodney A. Melgard, O.D. • Warren J. Stoltman, O.D.**  
**George W. Robertson, O.D. (Retired) • Daniel S. Conrad, M.D.**

103 Center Drive, Suite 100, Buffalo • 763-682-1282

Visit Us Online At  
maplelakemessenger.com





# TWO-FUR DEAL!

**FREE FURNACE** With Air Conditioner Purchase  
*Cool And Cozy All Summer – Warm and Fuzzy All Winter*

**Hurry! Fur a limited time only!**

## DOG GONE Good Deal

If your air conditioner and furnace are over ten years old, they've pretty much gone to the dogs. They're more prone to roll over and break down **and** they're also inefficient energy wasters. But here's your chance to fetch a **FREE STANDARD EFFICIENT FURNACE** when you purchase a high efficient air conditioner\*. Hurry! The dog days of summer will be here before you know it.



**HURRY!**  
The **FREE FURNACE**  
With Air Conditioner Purchase  
Offer Expires 5/1/15



**\*Call For Details. This offer cannot be combined with other offers. \*\*Upon Credit Approval**

- 10-year parts and labor warranty
- Free 12 months Interest Free Financing\*\*
- **FIRST 10 CALLERS** also receive a free programmable thermostat with purchase of air conditioner

**DeZiel Heating & A/C, Inc.**  
**763-684-3965 • www.dezielhvac.com**

## Legal Notices

### CITY OF MAPLE LAKE NOTICE OF HEARING ON IMPROVEMENT

Notice is hereby given that the City Council of the City of Maple Lake, Minnesota will meet in the Council Chambers of the City of Maple Lake, 10 Maple Avenue South, Maple Lake, Minnesota at 7:00 pm on Tuesday, April 21, 2015, to consider the making of the 2015 Sewer Repairs Project in the rear yard across between 22 Elm Ave. S and 44 Elm Ave. S. Proposed improvements include sanitary sewer and water main replacement. The improvements are made pursuant to Minn. Stat. §§429.011 to 429.111. The area proposed to be assessed for such improvement is the properties abutting said improvements. The estimated cost of the improvement is \$166,100.00. A reasonable estimate of the total amount to be assessed and a description of the methodology used to calculate individual assessments for affected parcels will be available at the hearing.

Such person as desire to be heard with reference to the proposed improvement will be heard at this meeting. Additional information on the 2015 Sewer Repairs can be

found on the City's website at ci.maple-lake.mn.us.

Lee Ann Yager  
City Clerk/Treasurer  
(28-29c)

### ALBION TOWNSHIP ASSESSMENT NOTICE

NOTICE IS HEREBY GIVEN, That the Local Board of Appeal and Equalization of the Township of Albion of Wright County, Minnesota, will meet at the Albion Town Hall 9020 30th St NW, Annandale; at 7:30pm, on Monday the 20th of April, 2015, for the purpose of reviewing and correcting the assessment of said township for the year 2015. All persons considering themselves aggrieved by said assessment, or who wish to complain that the property of another is assessed too low, are hereby notified to appear at said meeting and show cause of having such assessment corrected.

No complaint that another person is assessed too low will be acted upon until the person so assessed, or his agent, shall have been notified of such complaint.

Debbie Uecker  
Albion Township Clerk  
(28-29c)

**Week of April 17-23**

**BUFFALO**  
FIVE STAR CINEMAS

- **Paul Blart: Mall Cop 2 (PG)**  
11:50am, 12:15, 2:00, 2:25, 4:10, 4:35, 6:20, 7:05, 8:30, 9:25
- **The Longest Ride (PG-13)**  
11:35am, 2:45, 6:10, 9:10
- **Woman in Gold (PG-13)**  
11:55am, 2:20, 4:45, 7:10, 9:35
- **Furious 7 (PG-13)**  
12:30, 4:10, 7:30
- **Get Hard (R)**  
11:35am, 2:00, 4:25, 7:00, 9:30
- **Home (PG)**  
11:50am, 2:10, 4:15, 6:30, 9:00
- **Cinderella (PG)**  
11:50am, 3:00, 6:05, 9:05
- **No Passes Allowed**

100 1ST AVENUE (763) 682-3000  
**FIVE-STAR-CINEMAS.COM**

*The Annandale Lions Clubs announces...*

**CASH BAR**  
*Rich's at Russell's*  
Every Monday night at 6:30 p.m.

- **Game 1: 37 #s - Win \$200**
- **Game 8: 62 #s - Win \$500**
- **Game 9: 40 #s - Win \$200**
- **Game 16: 62 #s - Win \$500**

**BINGO!**  
**TWO**  
**\$500**  
*Coveralls*  
License #02921

**MADIGAN'S**  
PUB & GRILL

**SIGN UP FOR SPRING VOLLEYBALL LEAGUES NOW!**

**Men's Monday Nights (4 person teams)**  
**Women's Tuesday Nights (6 person teams)**  
**Co-Ed Wednesday & Thursday Nights (6 person teams)**  
**\$100 per team sign-up**

**Player Specials: Mon. & Tue. - 2 for 1 Drinks, Wed. & Thu. - First Pitcher of Beer - BOGO FREE!**

**Wear Your WILD Jersey during week night games and receive 2 for 1 drinks!**

**MAPLE LAKE • 320-963-6660 • BELOW THE WATERTOWER**  
**OPEN DAILY AT 11AM • WE DELIVER ANY ITEM ON THE MENU!**

**AMERICAN LEGION CLUB**  
Post 131 • Maple Lake • Lottery Tickets On Sale • 320-963-3911  
Monday-Saturday: 10 a.m. - 12:30 a.m. • Sunday: 11:30 a.m. - 7 p.m.

**UPCOMING EVENTS**

Thursday, April 16th - Legion Auxiliary Meeting 7 p.m.  
Friday, April 17th - **Down the Road Band** 8 p.m. - Midnight

**FRIDAY NIGHT FOOD SPECIAL**  
**Pasta - \$7.95**  
Regular Menu Available

**TUESDAY NIGHT BAR BINGO**  
Join us at 6:30 p.m.  
8 regular & 2 jackpot games  
Food Available  
**f FIND US ON FACEBOOK!**

**Meat Raffles: Friday 5:30 p.m. & Sunday 3 p.m.**  
Friday & Sundays Includes a \$2/\$40 Package & Sundays a \$5/\$100 Package  
Proceeds go to Irish PATHS & Maple Lake Library

**INJURED AT WORK? DISABILITY DENIED?**

**Contact Us Today For Free Advice**

Ask about our "Win-Win Guarantee"

1-888-343-5375  
**www.GetFields.com**

**FIELDS LAW FIRM**

**GOT KNEE PAIN?**  
Get a Pain-Relieving Knee Brace At Little or **No Cost to You**  
**You May Qualify for Free Shipping**  
We Do All The Paperwork  
Shoulder Braces, Ankle Braces, Back Braces Also Available

*Medicare Patients Call Us Right Now*

**1-800-755-6807**



# CLASSIFIED ADS

## Help Wanted

Wanted Part-Time Driving Caregiver in Maple Lake, to provide transportation and light housekeeping for 3 kids (ages 11, 13 & 15). Must be caring, reliable, punctual and tobacco-free. Needed June - August / Monday - Thursday / 4 hrs per day. Email larsonv@gmail.com if interested for more details. (27-29p)

Cleaning person for the Maple Manor. Contact Cathy at 320-963-5283. (29-31c)

## HELP WANTED DELI Part-time Nights & Weekends

Apply Within  
Rogers BP Amoco  
300 Hwy. 55  
Maple Lake  
320-963-6555

## Services

Computer Repair. Professional service, reasonable prices. Hundreds of happy Wright County customers. 320-963-6094 (25-31p)

## For Sale

Dresser, nightstand, shelf with tin sides, round pedestal table, all oak, \$70 each. Call 207-391-2176. (27-29p)

1998 Dodge Durango - 293,000 miles, runs well, in Maple Lake. \$1,999. Call 207-391-2176. (27-29p)

Heavy duty car dolly trailer; 763-300-5527 (29-31p)

## For Rent

WestMar Apts. in Maple Lake: newly redecorated, garbage, security, mowing, furnished, \$700/mo. with garage. Call 612-965-5503. Available April 15. (29-31c)

## Free

Steel desk and/or steel blueprint file. Must pick up at the Maple Lake Messenger and move yourself. Call 320-963-3813 if interested. (29-31f)

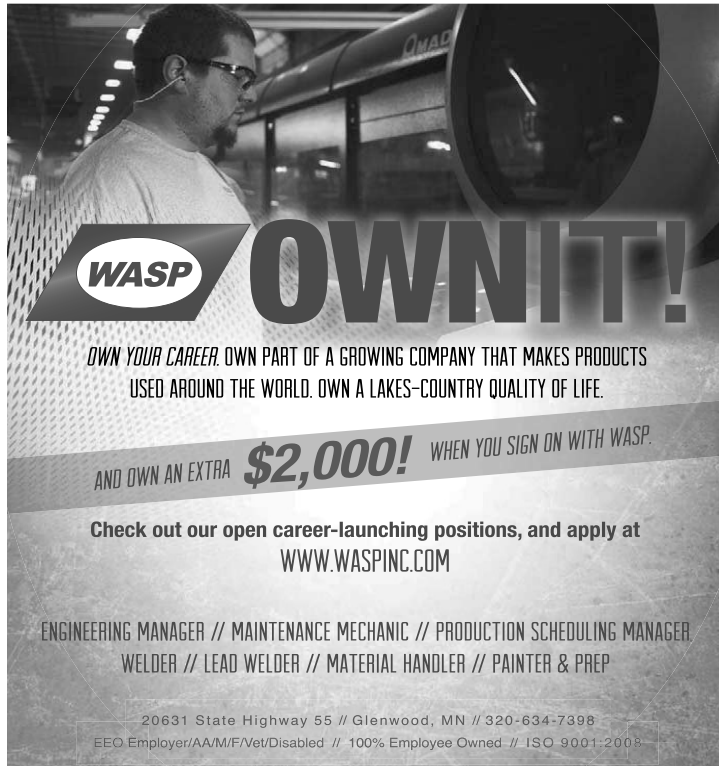
## MAPLE LAKE SCHOOLS School Nurse

Maple Lake Schools has a 2015-16 opening for a full time School Nurse. Requires a Bachelor's degree in Nursing, R.N. License, a Public Health Nurse Certificate and a MN Public School Nurse License.

Please send cover letter, resume, 3 letters of reference, transcripts, and "Certified" application (available on our website: [www.maplelake.k12.mn.us](http://www.maplelake.k12.mn.us)) to:

Kris Harlan, Elementary Principal  
Maple Lake Schools  
PO Box 788  
Maple Lake, MN 55358

Application Deadline: April 30, 2015. EOE



**WASP OWN IT!**

OWN YOUR CAREER. OWN PART OF A GROWING COMPANY THAT MAKES PRODUCTS USED AROUND THE WORLD. OWN A LAKES-COUNTRY QUALITY OF LIFE.

AND OWN AN EXTRA **\$2,000!** WHEN YOU SIGN ON WITH WASP.

Check out our open career-launching positions, and apply at [WWW.WASPINC.COM](http://WWW.WASPINC.COM)

ENGINEERING MANAGER // MAINTENANCE MECHANIC // PRODUCTION SCHEDULING MANAGER  
WELDER // LEAD WELDER // MATERIAL HANDLER // PAINTER & PREP

20631 State Highway 55 // Glenwood, MN // 320-634-7398  
EEO Employer/AA/M/F/Vet/Disabled // 100% Employee Owned // ISO 9001:2008

## Classified Advertising

Must be placed by noon on Tuesday for Wednesday publication. Call 320-963-3813-ONLY \$2 per line (Minimum-\$6) Free private party classifieds for Messenger subscribers! Maple Lake Messenger - (320) 963-3813

### COMPANY DRIVERS

Drivers pull Tankers, Flatbeds, and Vans

- Twin Cities
- Sauk Centre, MN
- Marshall, MN
- Fargo, ND
- Rockford, IL
- Des Moines, IA
- Chippewa Falls, WI
- Duluth, MN
- Mankato, MN

\$500 Sign On Bonus After 90 Days! Company Drivers can make up to \$75,000 a year!

### OWNER OPERATORS

- Fargo, ND
- Marshall, MN
- Twin Cities
- Mankato, MN
- Iowa and Illinois

\$1,500 Sign On Bonus Payable on First Settlement! Owner Operators can make up to \$275,000 a year!

APPLY ONLINE!  
[www.kanetransport.com](http://www.kanetransport.com)  
CALL TODAY!  
877-714-5263 ext. 5224

**KANE**  
TRANSPORT INC

Kane Offers A Generous Benefit Package & Monthly Incentives!



MCAN

Minnesota Classified Advertising Network



### HELP WANTED - DRIVERS

#### NOW HIRING

Company OTR drivers. \$2,000 sign on bonus, flexible home time, extensive benefits. Call now! Hibb's & Co. 763/389-0610

#### LINSMEIER TRUCKING

A MN based company is now hiring Company Drivers & Owner/Operators to pull hopper bottom in the upper Midwest. Home weekends. Call 320/382-6644

#### CDL TRUCK DRIVERS

Join our 5/2 fleet! Weekly home time. \$1,100 per week average. Call 800/867-8172 for details. EEOE/AAP [www.drive4marten.com](http://www.drive4marten.com)

### HELP WANTED

**CRIMINAL CONVICTIONS**  
and Arrest records expunged or sealed. Free one hour Consultation to discuss recent changes to the Expungement Laws and how they may affect your future. Duggins Law Firm 651/490-0222

**BRINKS BEER JOINT/104 CLUB:**  
Kitchen manager needed at West Central Minnesota restaurants. Top pay, gratuities, possible employee benefits! Also need night/weekend line cooks. Contact Ben: 320/761-4276; email: bahonny@yahoo.com

### EMPLOYMENT

#### RAILROAD VEGETATION CONTROL:

Full-time traveling opportunity, 60-80 hours/week, \$11-\$15/hour, meal allowance, paid lodging & benefit package. RAW, Inc. in Cooperstown, ND - 888/700-0292 | [www.rawapplicators.com](http://www.rawapplicators.com) | [info@rawapplicators.com](mailto:info@rawapplicators.com)

#### SOFTWARE ENGINEERS

Programmers with C++, .NET or C# experience or training. High pay scale. Aatrix Software, Inc. A rapidly growing eFile provider [bruces@aatrix.com](mailto:bruces@aatrix.com)

#### ECONOMIC DEVELOPMENT MANAGER

The city of Browns Valley, MN is in search of a highly motivated, community minded person to manage its economic development program. Job description and/or application can be picked up at City Hall or from the City's website at: [www.brownsvalleymn.com](http://www.brownsvalleymn.com) EOE

### BUSINESS OPPORTUNITY

#### ATTN: COMPUTER WORK

Work from anywhere 24/7. Up to \$1,500 part time to \$7,500/mo. full time. Training provided [www.WorkServices6.com](http://www.WorkServices6.com)  
**ONLY \$279** to reach a statewide audience of 3 million readers!!! **1-800-279-2979**

### MISCELLANEOUS

#### SAWMILLS

from only \$4,397.00 Make & save money with your own bandmill. Cut lumber any dimension. In stock, ready to ship. Free Info/DVD: 800/578-1363 Ext.300N [www.NorwoodSawmills.com](http://www.NorwoodSawmills.com)

#### STOP OVERPAYING

**FOR YOUR PRESCRIPTIONS!**  
Save up to 93%! Call our licensed Canadian and International pharmacy service to compare prices and get \$15.00 off your first prescription and free Shipping. Call 800/259-1096

#### DISH NETWORK

Get more for less! Starting \$19.99/month (for 12 months), plus Bundle & save (Fast Internet for \$15 more/month.) Call Now 800/297-8706

#### DONATE YOUR CAR

truck or boat to Heritage For The Blind. Free 3 day vacation, tax deductible, free towing, all paperwork taken care of 800/439-1735

#### DO YOU OWE

over \$10,000 to the IRS or State in back taxes? You could get a settlement for as low as 25% of previous IRS settlements. Call now! 800/558-0486

## CLAIM YOUR CASH!

with help from the



One in twenty Minnesotans has more than **\$100** in unclaimed property waiting to be claimed.

You may be the one!

go to  
[mn.gov/commerce/find-ucp](http://mn.gov/commerce/find-ucp)  
or  
[missingmoney.com](http://missingmoney.com)



**SUBSCRIBE FOR  
24/7 ACCESS TO  
THE MAPLE LAKE  
MESSENGER  
E-EDITION!**

[www.MapleLakeMessenger.com](http://www.MapleLakeMessenger.com)  
Call 320-963-3813

## Sudoku

### ANSWER:

7	2	4	8	9	5	1	3	6
8	5	3	1	2	6	9	7	4
1	9	6	3	4	7	2	5	8
4	6	2	5	7	8	3	9	1
3	8	9	4	1	2	7	6	5
5	1	7	6	3	9	4	8	2
2	7	5	9	6	4	8	1	3
6	4	1	7	8	3	5	2	9
9	3	8	2	5	1	6	4	7

# Building-Home Improvement DIRECTORY

## HOWARD'S PLUMBING HEATING & AIR CONDITIONING

Marv & Buck Howard, Owners

Master Plumber license: Marv 058229-PM • Buck 063048-PM

- TempStar Heating & Cooling Products
- High Efficiency Boilers
- Water Heaters
- Water Softeners



3 Generations • Since 1961  
Licensed • Bonded • Insured

320-274-8913  
After Business Hours: 320-236-2102  
715 Norway Drive • Annandale  
[www.howardsplumbinginc.com](http://www.howardsplumbinginc.com)



3-D Concrete & Masonry Inc.  
**Bruce Dalbec**

Foundation • Floating Slabs  
Brick • Stone • Driveways  
Patios • Sidewalks • Steps  
Concrete Stamping • Floors  
Garages • Free Estimates  
Residential & Commercial

Cell: 612-366-0909

Office: 763-682-2358

Fax: 763-682-2858

[threedconcrete@hotmail.com](mailto:threedconcrete@hotmail.com)

P.O. Box 85 • Buffalo, MN



- SEAMLESS GUTTERS
- NO JOB TOO BIG OR SMALL
- 20 YRS OF EXPERIENCE
- FREE ESTIMATES
- LIFE TIME WARRANTY
- FULLY INSURED
- CREDIT CARD ACCEPTED
- GUTTER COVER OPTIONS AVAILABLE
- COLOR MATCHING TO EXISTING COLORS
- FREE GUTTER CLEANING (WITH GUTTER COVER PURCHASE)

**763-568-2445**

## DeZiel Heating & Air Conditioning, Inc.

Heating • Cooling • Sales • Service

**Buffalo 763-684-3965**  
[dezielhvac.com](http://dezielhvac.com)

## BRUCE DALBEC CONTRACTING INC JOE HOGAN

"EVERYTHING IN CONCRETE & MASONRY"  
NEW CONSTRUCTION & ADDITIONS  
**FREE ESTIMATES**

- Foundations • Floors • Floating Slabs
- Garages • Driveways • Steps • Sidewalks
- Patios • Brick & Stone • Veneer

Email: [joehogan.concrete@gmail.com](mailto:joehogan.concrete@gmail.com)

**OFFICE: 320-963-3667**  
**CELLULAR: 763-286-4011**

## FOBBE'S

Well Drilling  
Complete Well Service

Pump & Tanks  
Well Abandonments

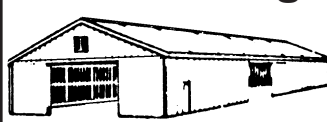
320-274-5957  
320-274-3634

Annandale, MN • 55302

Truck  
Phones



## Pole Buildings



We will construct your pole building or sell you the necessary material. Come in and talk over your building needs. We're here to serve you.

**Maple Lake Lumber Co.**  
**320-963-3612**



**Hegle**  
Door Sales, Inc.

Garage Doors • Electric Openers  
Sales • Service • Repairs

[www.hegledoorsales.com](http://www.hegledoorsales.com)

Tim & Lorie Hegle  
375 Spruce Avenue N.  
Maple Lake, MN 55358



Toll Free: 1-800-273-4699

Call: (320) 963-3934

**Borrell Refrigeration,**  
Plumbing, Heating  
& Air Conditioning

Water Conditioning & Drinking Water Systems

**Dave Borrell • 320-963-3107**

**RUSS ORSON ELECTRIC, Inc.**

Commercial Maple Lake

320-963-7727

Industrial [www.orsonelectric.com](http://www.orsonelectric.com)

Residential

## FULLER CONCRETE & Masonry, Inc.

Block • ICF • Poured Foundation • Brick & Stone • Floors • Floating Slabs • Garages  
Concrete Staining/Stamping • Patios • Driveways • Steps • Sidewalks • Removal • Replacement

**FREE ESTIMATES • 40 YEARS EXPERIENCE**

**Stan Fuller • 612-366-0910**

Office: 320-963-5522

Fax: 320-963-5530 • [fuller@lakedalelink.net](mailto:fuller@lakedalelink.net)

[www.fullerconcrete.net](http://www.fullerconcrete.net)

References Available • Fully Insured

**LENGYEL LECTRIC**  
BRIAN LENGYEL  
**320-963-6640**  
Licensed & Bonded  
Master Electrician

## GET NOTICED!

To put an ad in a  
Messenger Directory  
Call 320-963-3813

[maplelakemessenger.com](http://maplelakemessenger.com)



Volunteer Week  
continued from page 1

**Maple Lake Library**  
Maple Lake Library is completely run by volunteers. Volunteers work a 3 hour shift. We ask that they commit to at least one shift a month. The library is open Monday and Friday from 12:00 p.m. to 6:00 p.m., Wednesday 12:00 p.m. to 8:00 p.m., and Saturday 10:00 to 1:00 p.m. Computer skills appreciated!  
Working at the Library is just one of the ways to volunteer. There are a variety of opportunities to share your skills, talents, or interests.

- Work with the Programs Committee: Suggest ideas for new programs or one-day events and help make them happen.
- Use your technology expertise to assist with computers, iPads, and other devices.
- Find new sources of revenue: Research/write grants; explore additional ways of funding the Library.
- Communicate Library information: Write articles for the Messenger and other publications, help with maintaining our website and Facebook posts, suggest additional ways to promote the Library.
- Get involved in the annual fundraiser, help with planning, contacting/thanking donors, assembling baskets, help with the set-up or decorating ,work at a ticket table, help with the live or silent auction or the wine pull.

Contact: Sue Sylvester, Volunteer Coordinator, 320-274-1498 or email jeffsylvester@hotmail.com

**Maple Lake Public Schools**  
Volunteer Opportunities include classroom volunteer, story-book reader, Santa’s Secret Shop helper, Career Day presenter, field trips, work in concessions, Box top & Campbell clippings, book fair, join PIE, dances.  
Contact: Celeste at (320) 963-6600

**Maple Manor Senior Dining Center**  
Volunteer opportunities:

- Delivering for Meals on Wheels
- Assisting with meal operations, table setting, serving meals, host/hostess, decorating, providing entertainment, guest speakers, card players, and serving on social planning committees.

Maple Manor DINING SITE  
555 2nd St. W  
Maple Lake, MN, 55358  
Contact: Dining Site Coordinator Ginger O’Loughlin (320) 963-5771 10:00-1:00 P.M. gingero@charter.net

**Pioneer Park**  
Volunteer opportunities:

- School field trip tour guides to educate children about Pioneer history.
- Handymen or women with carpentry skills to fix up buildings and landscape around the park.

Contact: Carol Weir at 320-274-8956

**Senior Connections**  
Volunteer Opportunities:

- Youth service projects: Assisting and entertaining Senior Citizens and the disabled.

Senior Citizens: Share crafts, information, and entertainment in a classroom setting.

- Veterans Day guest speakers,

County Board  
continued from page 3

\* Approved a pair of amendments to the personnel policy and procedures manual concerning the beginning salary range for employees and procedures for employees who work out of class to be consistent with administering salary ranges. The changes to the amendments were approved by the personnel committee at its March 11 meeting.

\* Referred to the building committee discussion of conference room guidelines. The matter will be added to the April 22 agenda.

\* Approved the appointment of Lori Hartley to the Wright County Extension Committee. Hartley was appointed to a three-year term that will run through Dec. 31, 2017.

presentations, and entertainers.

- Journalism: writing for the Maple Lake Messenger through the Pencil Pride and Teen Spotlight columns.
- Schoolseum: Design showcases illustrating outstanding achievements, arts, academics, and/or the promotion of organizations.

Contact: Senior Connections Coordinator Ginger O’Loughlin at 763-301-4717. gingero@charter.net

**St. Timothy’s School**  
Volunteer Opportunites: (all volunteers are required to attend Virtus training and complete a background check)

- Work outside on the flower gardens, shrub areas, upkeep and repair of playground areas and the ball diamond.
- During the school year we have many volunteers that help facilitate learning for students in grades Pre-K through 8. Many volunteers read with students, help with math facts, spelling and art projects. Volunteers also help in the classroom with grades K-2

center time.

Contact: Questions about volunteering for the school may be directed to schooloffice@churchofsttimothy.org. We welcome all volunteers and try to find the right fit for each volunteer.

**True Friends**  
Volunteer Opportunities:

- Family Volunteers at Camp Courage

Date: One week commitment. Weeks available throughout July and the week of August 2 and August 16.

Details: Families up to 7 members (ages 5+, adults provide supervision for youths) will assist during camp depending on skill sets (including, but not limited to: cabin support, kitchen support, housekeeping, or program design). Onsite housing and meals provided at no cost.

- Camp Courage Therapeutic Horsemanship Volunteers

Dates: Monday-Thursdays June 8-August 16

Details: Whether you have horse experience or just a passion, the True Strides program at Camp

Courage has positions for volunteers who are interested in assisting our staff (both 2 and 4 legged) and riders in providing therapeutic benefits experienced by individuals with disabilities through our horsemanship program.

- Youth Volunteers at Camp Friendship : Saturday 5PM-Friday 5PM June-August. Youths ages 14+ engage in leadership development programming while assisting staff and campers with disabilities in a variety of camp based activities, including: hayrides, fishing, tubing, music, arts & crafts, high & low ropes climbing, water carnivals, and MORE! Onsite housing and meals provided for the week at no cost.

Contact: Volunteer Services, 952-852-0101 x399, volunteer services@truefriends.org

**Wright County 4-H**  
Looking for volunteers to be club leaders and to help with various 4-H activities

Contact: Brittant Eich at eich020@umn.edu or Kelly Strei at strei016@umn.edu

Sentencing  
continued from page 3

Lies, Mark Reinhold, age 29, of Annandale, sentenced on 04/08/15 for Probation Violations for Felony Controlled Substance Crime in the Fifth Degree to one year and one day prison. Sentenced by Judge Davis.

Martin, Matthew Barrett, age 38, of Buffalo, sentenced on 04/09/15 for Probation Violations for Gross Misdemeanor Second Degree DWI to 365 days jail. Sentenced by Judge Strand.

Odegard, Michael Robert, age 26, of Rockford, sentenced on 04/03/15 for Probation Violations for Felony Assault in the Third Degree to 90 days jail. Sentenced by Judge Mottl.

Stuntebeck, Cade Joshua, age 30, of Montrose, sentenced on 03/30/15 for Misdemeanor Domestic Assault to 90 days jail, \$200 fine; 76 days stayed for two years on conditions of probation, serve 14 days, pay \$200 fine plus surcharges, remain medically compliant, complete Wright County Domestic Abuse Batterer’s Intervention Program and follow all recommendations, have no use or possession of firearms or dangerous weapons, have no same or similar violations. Sentenced by Judge McPherson.

Welliver, David Blaine, age 54, of Buffalo, sentenced on 04/06/15 for Misdemeanor Issuance of Worthless Checks to 10 days jail, \$150 fine; 10 days stayed for one year on conditions of probation, pay \$150 fine plus surcharges, pay restitution, have no same or similar violations. Sentenced by Judge McPherson.

# Richard “Rick” Thomas

Cell: 612-242-0785  
Home: 320-963-3063  
Office: 763-682-3434

RickThomas@EdinaRealty.com

311-10th Ave. South, Buffalo, MN 55313



# EdinaRealty®



## Maple Lake WINE & SPIRITS

www.mlwine-spirits.com

Monday-Wednesday: 9 a.m.-9 p.m. • Thursday-Saturday: 9 a.m.-10 p.m. • Sunday: Closed  
Next to Cenex • 901 State Hwy. 55 East, Maple Lake • 320.963.3715



### April's Wine of the Month

## FETZER

VINEYARDS

### All Varieties

750ml • reg. \$9.99

## \$7.99



### Mail-In Rebate!

**\$4 Off 4 Bottles**  
**\$13 Off 8 Bottles**  
**\$24 Off 12 Bottles**



### NEW!

## CHATEAU LA PAWS

Red Wine Blend Chardonnay

## \$12.99



### NEW!

## CHLOE

WINE COLLECTION

## \$14.99

Pinot Noir • Pinot Grigio

Join Today & Experience Maple Lake's

## Wine Club



## CRAFT BEERS of the Month

### \$6.99 6-packs

Samuel Adams Lager  
Seasonal Summer Ale  
Blue Moon Belgian White  
Rider IPA • White IPA

## STRONGBOW

Hard Apple Cider

## \$14.99

12 bottles - Variety Pack



## BUSCH LIGHT

24-12 oz. bottles

## \$16.99

reg. \$18.99



## BREW FEST

Buy your tickets here! On sale now!

Join the party at Maple Lake's first ever Brewfest, **June 6, 2015** in conjunction with our **125th Anniversary Celebration!**



Maple Lake Brewfest  
Saturday, June 6, 2015  
Sponsoring from 12:00-10:00 PM  
Location: Pioneer Park  
With GrubHub and the National Beer




Maple Lake Brewfest  
Saturday, June 6, 2015  
Sponsoring from 12:00-10:00 PM  
Location: Pioneer Park  
With GrubHub and the National Beer

## Quasquicentennial Essay Contest

Help celebrate the 125th birthday of Maple Lake!

### “What I Like Most About Maple Lake”



Cash prizes for each level!  
\$50 for 1st place • \$25 for 2nd place

### 3 Writing Levels:


K-6th grade - 50 to 300 words  
7-12th grade - 150 to 500 words  
Adults - 300 to 1000 words

Entries judged on:  
Creativity • Content • Grammar

Do NOT put your name on the essay. Include a cover letter with your:  
Name • Phone Number • Writing Level

Winner notified by May 29th.

Drop Off At These Locations:  
Maple Lake City Hall • Maple Lake Library • Maple Lake Messenger  
OR Email - essaymaplelake@yahoo.com



# WANTED

## JUNK CARS/TRUCKS OLD FARM MACHINERY

wire fencing, barbed wire, chain link fencing,  
hog panel & more! car or pick-up truck tires - rim  
mounted only. no semi or tractor tires.



**\$\$ PAYING TOP DOLLAR \$\$**  
**CALL US! 320-274-8497**

# FRENCH LAKE

## AUTO PARTS

OVER 50 YEARS IN THE AUTO RECYCLING BUSINESS



Privileged to see the love in a father's eyes.

CentraCare Health – Monticello is privileged to care for you.

From cuddling a newborn to seeing love in a parent's eyes, the nurses and doctors at CentraCare Health – Monticello's Birth Center cherish the moments, big and small, they share with each patient.

With updated patient suites, thoughtful amenities, comprehensive education, and a team of highly-skilled professionals, moms treasure the personalized care that CentraCare Health – Monticello delivers.

Learn more at [centracare.com/montibirthcenter](http://centracare.com/montibirthcenter).

## CENTRACARE Health Monticello