



Art  
Elevates  
Life

# art&air

*Webster Groves' 11th annual outdoor art fair*

**June 6<sup>6p</sup><sub>10p</sub> 7<sup>11a</sup><sub>10p</sub> 8<sup>noon</sup><sub>5p</sub> | 2014**

**Webster Groves @ Lockwood & Bompart**

**[facebook.com/artandair](https://facebook.com/artandair)**

**[twitter.com/artandair](https://twitter.com/artandair)**

**[wcfa.org](http://wcfa.org)**

*Eden*  
THEOLOGICAL  
SEMINARY

**Webster**  
UNIVERSITY

Original artwork image provided by Russell Vanecek. Graphic Design by Laura Puricelli.



## BMW i3. ELECTRIC AND ELECTRIFYING.

Meet the BMW i3.

The 2014 World Green Car Of The Year!

Now Available!

- 100% Electric
- Available Tax Credits
- Fun & Efficient



# *Autohaus* BMW

3015 SOUTH HANLEY ROAD • 314-727-8870  
autohausbmw.com

## THE NEW MINI. THE NEW ORIGINAL.

The new MINI Hardtop, more efficient, more powerful, and even more fun to drive! Every new MINI hardtop is now powered by BMW twin power turbocharged engines. Available with features that are typically reserved for luxury cars, the new MINI is better in every way while still retaining its legendary feistiness.



**MINI OF ST LOUIS**  
40 Sunnen Drive  
St Louis, Mo 63143  
(314)644-6464

[www.MINIOFSTLOUIS.com](http://www.MINIOFSTLOUIS.com)

## Schedule of Events

*All performances subject to change*

**FRIDAY, JUNE 6** FAIR HOURS 6 - 10 P.M.

### MAIN STAGE

- 6-10 p.m. Sip&Stroll Wine Tasting with Robust  
6-6:55 p.m. WGHS Jazz Combos  
7:05-8 p.m. Rosewood  
8:10-10 p.m. North of the Quarter

**SATURDAY, JUNE 7** FAIR HOURS 11 A.M. - 10 P.M.

### MAIN STAGE

- Noon-12:45 p.m. St. Louis Teen Talent Competition Finalists  
12:55-1:50 p.m. Autumn's Child  
2-2:55 p.m. Bobby Norfolk  
3:05-4:05 p.m. Babaloo  
4:15-5:45 p.m. Dang  
6-10 p.m. The Old Webster Jazz & Blues Festival presents "Webster's Got Talent" Showcase  
David Gomez Quartet  
Dead Flowers

### BIG TOP

- Noon-12:30 p.m. WGHS Orchestra Quartet  
12:35-1:20 p.m. North Webster Gospel Choir  
1:25-2:15 p.m. Freedom Winds  
2:20-3:10 p.m. Vesta Johnson & Son  
3:15-4:10 p.m. Kristen Wright's Strum Girls  
6-10 p.m. Juniper Substrate, The Stuntmen, Steve Franklin, and JFK and Three Finger Charlie will entertain during our **Artful Pairings** event

**SUNDAY, JUNE 8** FAIR HOURS 12 - 5 P.M.

### MAIN STAGE

- Noon- 12:50 p.m. Bobby Norfolk  
1-3 p.m. Ralph Butler Band  
3:10-4 p.m. TnT Duo  
4:10-5 p.m. Bella and Lily

### BIG TOP

- Noon- 12:50 p.m. Gallica  
12:55-1:25 p.m. WGHS Orchestra Quartet  
1:30-2:10 p.m. Corky, Pete and Steve (CPS)  
2:15-3:10 p.m. Poets Out Loud with Dwight Bitikofer, Katy Miller, Travis Mossotti, Tess Thompson  
3:15-4:05 p.m. Deadly Neddy  
4:10-5:00 p.m. The U-Turns



Work of 25 Local Artists Available

21 N. Gore | Webster Groves | 314.402.1959

[www.GreenDoorartgallery.com](http://www.GreenDoorartgallery.com)



*insight*  
theatre company

Heagney Theatre at Nerinx Hall  
530 East Lockwood Ave.  
Webster Groves, MO 63119  
Phone: (314) 556-1293

INDIVIDUAL AND SEASON TICKETS  
ON SALE NOW!

[insighttheatrecompany.com](http://insighttheatrecompany.com)

**OLIVER!**

JUNE 5-22

Over the River  
and Through  
the Woods  
JULY 10-20



AUGUST 21-31

DEATH  
OF A  
SALESMAN

SEPTEMBER 11-21

*Fashion  
and Style*

CLOTHING • SHOES • ACCESSORIES



*A Fashion  
Boutique*

102 W. Lockwood Ave. • 314.918.1008  
Webster Groves



**Serendipity  
Gallery**

uncommon objects  
for everyday life

6161 DELMAR, #101  
ST. LOUIS, MO 63112  
[SERENDIPITY-GALLERY.COM](http://SERENDIPITY-GALLERY.COM)  
314-449-6400



## Webster Community Arts Foundation Board of Directors



**From left:** John Castagno, Kathie Cahoon, Gene Dobbs Bradford, Holly Smith, Patrick Murphy, Kelly Weber, Paul Reuter, Davis Allen, J.R. Walters, Marilynne Bradley, Peter Love, K. Wentzien, Jeane Vogel, Janice Seele, Dave Sanders, Rick Peterson.

**Not pictured:** Debbie Meyer, Pam Niehaus, Glenn Sheffield, Beth Strobe, Kedra Tolson, Gerry Welch.

## Art&Air Steering Committee



**From left:** Dave Sanders, Steve Sorkin, Julie Moyer, Rick Kuhn, Vicki Sanford, Brian Ward, Christine Bertolino, Lisa Ward, Rick Peterson, Kathie Cahoon, Amanda Vader, Janice Seele, Jeane Vogel, Mike Blaes.

**Not pictured:** Dave Buck, Lane Endicott, Tp, Ferrara, Meg Nash, Lindsay Sihilling, Holly Smith, Erin Sullivan, J.R. Walters.

## Support the Arts

All proceeds of Art&Air benefit the mission of the Webster Community Arts Foundation - To enrich the community by encouraging and promoting the Arts. WCAF is a non-profit 501(c)3 charitable foundation.

## Thank You

Thank you to all Art&Air volunteers! Art&Air would not be possible without your dedicated support! Special thanks to the following organizations for providing significant volunteer hours throughout the fair weekend:

Boy Scouts of America, Girl Scouts of Eastern Missouri, Emmanuel Episcopal Church, Hixson Middle School Students and Staff, Rotary Club of Webster Groves, Steger Sixth Grade Center Students and Staff, Webster Groves Arts Commission, Webster Groves/Shrewsbury Area Chamber of Commerce, Webster Groves City Council, Webster Groves Presbyterian Church, Webster Groves School District, Webster Groves High School Students and Staff, Webster University, St. Louis Synergy, Holy Cross Academy

**Relish**  
St. Louis' Best Gift Store

Come say Hi to Mable!

**The Great Frame Up**  
Where Picture Framing is an Art™

**40% OFF**  
**ENTIRE**  
**CUSTOM**  
**FRAMING**  
**ORDER**

Offer good through 7/15/14.

31 Allen Avenue | Webster Groves | 314.892.8333 | [stlouis.thegreatframeup.com](http://stlouis.thegreatframeup.com) [relishcardsandgifts.com](http://relishcardsandgifts.com)



# See You at the Fair



PROUD SUPPORTER  
OF ART & AIR  
SINCE 2003!

314.966.KUHN | KUHNCONSTRUCTION@SBCGLOBAL.NET



**YUCANDU** LLC  
ART STUDIO

## ART CAMP 2014

FOR CLEVER, CREATIVE, ECLECTIC, EXPRESSIVE, INSPIRED, ARTISTIC FUN!

20 Allen Ave. Webster Groves • 314.963.4400 • yucandu.com

OPERA  
THEATRE  
OF SAINT  
LOUIS

# THE MAGIC FLUTE

Mozart. Mizrahi. Magic.  
MAY 24, 28, 30  
JUNE 5, 11, 15, 18, 21, 24, 28



## THE ELIXIR OF LOVE

True love comes quietly... sometimes with sprinkles.  
MAY 31  
JUNE 4, 6, 8, 12, 21, 25

### TWO GREAT OPPORTUNITIES TO INTRODUCE YOUR FAMILY TO OPERA!

**Family Four Packs Available  
for Only \$100**

**The Magic Flute:** June 5, 11, 24

**The Elixir of Love:** June 6, 12, 21

The Magic Flute Family Nights Include a Pre-Show Party

ExperienceOpera.org | (314) 961-0644

*All operas are sung in English and performed with  
members of the famed St. Louis Symphony.*

Opera Theatre gratefully  
acknowledges 2014 season  
presenting sponsor

**WELLS  
FARGO**

**ADVISORS**

## The Artists

booth # Name – Home State



Tim Frye



Diane Tessman



Kaeko Maehata

### CLAY/CERAMICS

- 509 Steve Ayers, Hannibal, MO
- 108 Daniel Bennett, Rushville, MO
- 602 Willow Block, Pettigrew, AR
- 223 Tammy Clark, Dexter, MO
- 209 Louis Colombarini, Dowelltown, TN
- 113 John Devin, Le Grand, IA
- 608 Tim Frye, Shumway, IL
- 415 David Hoover, Ozark, MO
- 323 James Howe, Troy, IL
- 317 David Johnson, Hernando, MS
- 312 Jimmy Liu, Ballwin, MO
- 610 Rebecca Livingston, Huntsville, AR
- 504 Eileen McDaniel, Wautoma, WI
- 403 Amy Millspaugh, Princeton, KY
- 617 Stephanie Pierson-Hutson, Fishers, IN
- 315 Gint Sabaliauskas, Evergreen, CO

### FIBER

- 601 Avril Clindinin, Irvington, NJ
- 613 JD Dehne, St. Louis, MO
- 204 Sandy Duffy, Georgetown, IN

- 616 Teresa Hays, Franklin, TN
- 325 Diane Lawrence, Berryton, KS
- 605 Greg Luttrell, Granite City, IL
- 413 Lisa Mergen, Nashville, TN
- 405 Rose Monzyk, Washington, MO
- 414 Diane Tessman, St. Louis, MO
- 318 Vickie Vipperman, Kingston Springs, TN
- 214 Diann Wensing, Waterloo, IL

### GLASS

- 205 Dylan Engler, Granville, OH
- 102 Leslie Friedman, Arlington, TX
- 215 Barbara Lillis, Lake St. Louis, MO
- 103 Kaeko Maehata, Augusta, MO
- 508 Faith Wickey, Centreville, MI

### JEWELRY

- 107 Diane Balber, University City, MO
- 201 Patricia Bergman, Yellville, AR
- 111 Michelene Berkey, Evergreen, CO
- 202 Amy Buettner, Portland, OR
- 218 Jill Bush, Champaign, IL

**PROUD TO BE  
A SPONSOR  
OF ART & AIR**  
TIMESNEWSPAPERS.COM

Proud to Sponsor  
Art & Air  
**WEBSTER GROVES**  
webstergroves.org

Since 1991.

**robust**  
WINE SHOPPE CAFÉ

**ARTful Pairings  
under the  
Art & Air  
Big Top Tent**

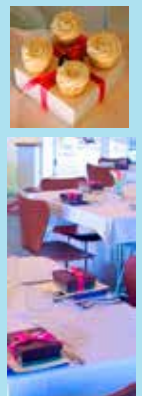
www.robustwinebar.com

The five  
W's of  
successful  
event  
planning.



Who.What.When.Where. **WOW**

Events Made Simple  
314 961 4433  
theoldorchardgallery.com





## The Artists

booth # Name – Home State

- 104 Jaime Jo Fischer, Austin, TX
- 212 Jeff Goodwin, Huntsville, AR
- 314 Linda Hobdy, Nashville, TN
- 308 Mindy Johnson, Springfield, MO
- 416 Bernadette Mahfood, Winona, MN
- 505 Phyllis & Jerry Minnery, Louisville, KY
- 306 Carolyn Phillips, Brazil, IN
- 412 Roger Rimel, St. Louis, MO
- 407 Leigh Roberts, Creve Coeur, MO
- 321 Sandra Russe, Kirkwood, MO
- 606 Taylor Saleem, St. Louis, MO
- 310 Jerry Scavezze, Salida, CO
- 506 John Strobel, Middleton, WI
- 320 Jennifer Walker, St. Louis, MO

### MIXED MEDIA

- 417 Jan Byron, Dallas, TX
- 224 Jeremy Floarke, Columbia, IL
- 303 Chad Forbis, Des Peres, MO
- 226 Bob Hartzell, St. Louis, MO
- 501 Heather Haymart, Ballwin, MO
- 322 John Hernandez, Lawton, OK
- 319 Susan Kline, Peru, IN

- 302 Bill Lachance, Webster Groves, MO
- 503 Christopher Lynch, St. Louis, MO
- 507 Bob Mahon, St. Louis, MO
- 216 Ed Martin, Springfield, IL
- 329 Ralph Parker, Salida, CO
- 221 Susan Rogers, Belleville, IL
- 106 Sarah Shoot, Makanda, IL

### PAINTING

- 203 Nancy Beard, O'Fallon, IL
- 316 Marilynne Bradley, Webster Groves, MO
- 116 Sergey Cherep, Acworth, GA
- 307 Michael Cornell, St. Louis, MO
- 411 Robert Dreyer, Webster Groves, MO
- 207 Jacob Duchane, Littleton, CO
- 419 Thomas Eckert, Pleasant Hill, TN
- 105 Charlie Greenholdt, Cape Coral, FL
- 604 Edmund Kowalski, High Ridge, MO
- 324 Jimmy Lange, Colorado Springs, CO
- 227 Charlene Marsh, Nashville, IN
- 220 Vic Mastis, St. Louis, MO
- 112 Robert McClelland, Grover, MO

more artists on page 8



Amy Buettner



Christopher Lynch



Thomas Eckert



Grand Arts Camp  
for Grades 9-12

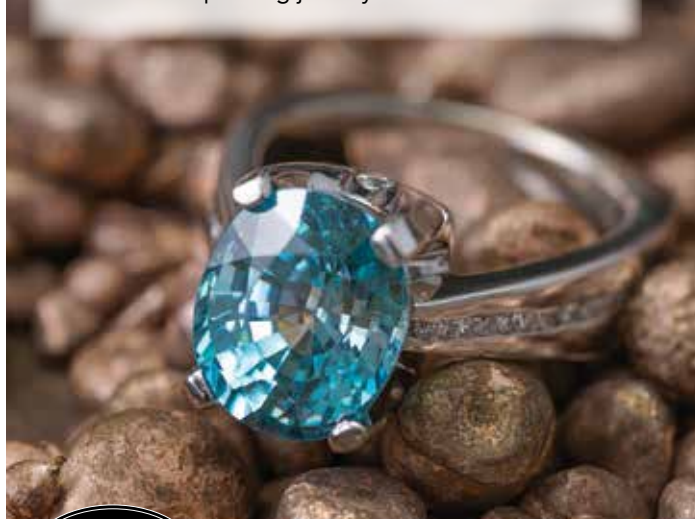


Craft Alliance Center of Art + Design and  
Saint Louis University offer a high school  
immersion camp with a metropolitan theme.

Two weeks: July 21-August 1  
(314) 534-7528 | [www.craftalliance.org](http://www.craftalliance.org)

SUMMIT JEWELERS offers you the most amazing jewelry available in metropolitan St. Louis. We have award-winning custom designs, a spectacular selection of colored gemstones and diamonds for every occasion – engagement rings, earrings, pendants and bracelets.

We invite you to visit our showroom to view our brilliant and sparkling jewelry.



7821 BIG BEND BLVD. | WEBSTER GROVES  
314-962-1400  
[WWW.SUMMITJEWELERSSTL.COM](http://WWW.SUMMITJEWELERSSTL.COM)

## The Artists

booth # Name – Home State



Sam Abatgis



Douglas Edmondson



Holly Foss

### PAINTING *continued*

- 326 Terri Myer, Fenton, MO
- 410 Lee Reams, Tulsa, OK
- 406 Stan Squires, Springfield, IL
- 418 Russell Vanecek, St. Louis, MO

### PHOTOGRAPHY

- 206 Sam Abatgis, St. Louis, MO
- 110 Neil Brown, St. Louis, MO
- 328 Tom Casey, Trenton, IL
- 313 Cheryl Dorris, St. Louis, MO
- 408 Rob Gilmore, St. Louis, MO
- 211 Stanley Goldberg, Louisville, KY
- 228 Ryan Hollis, Nashville, TN
- 217 Mark Hurd, St. Louis, MO
- 401 Robert Jones, Waleska, GA
- 420 Bill Manginelli, Lee's Summit, MO
- 309 Brian Miller, Baton Rouge, LA
- 404 Dennis Minner, St. Peters, MO
- 607 Stewart Rein, Goodyear, AZ
- 510 Clark Willett, St. Louis, MO

### WOOD/METAL/STONE

- 402 Paul Bayer, St. Louis, MO
- 609 Mary Boesdorfer, Rochester, IL
- 114 Dan Burleson, Troy, MO
- 208 David Calvin, St. Louis, MO
- 101 Douglas Edmondson, Pacific, MO
- 225 Michael Flood, St. Louis, MO
- 219 Jon Hecker, Bloomington, IN
- 502 Holt Lewis, Maumelle, AR
- 615 Steven Martin, Carterville, IL
- 301 Josh Merrell, Loveland, CO
- 304 Steve Phillips, Brazil, IN
- 409 Craig Riches, Silverhill, AL

### WORKS ON PAPER

- 109 Gary Bachers, New Boston, TX
- 311 Jerry Brown, Lee's Summit, MO
- 210 Lisa Crisman, Maryland Heights, MO
- 115 Holly Foss, Minneapolis, MN
- 305 Gary Gackstatter, Kirkwood, MO
- 327 Gillian Kemper, Oklahoma City, OK
- 213 Jean Lopez, St. Louis, MO
- 222 Michelle Wells, St. Louis, MO

## The Jurors

**Louis Carosello** worked as a Senior Art Director for companies including NBC and Anheuser-Busch. He has won several awards including a local Emmy. He has taught photography, drawing and graphic illustration in Florence, Italy. In 2011 he received his MA in Digital Arts from the London School of the Arts.

**Michael Swoboda** has spent his career in education, commercial digital imaging and graphic design. He has taught classes, delivered lectures and created workshops at five colleges and universities and across the Midwest.

**Christine Schmiz** is the co-founder of Brand Creative, an insight driven branding consultancy. Throughout her career in advertising, Chris' creative work has garnered numerous awards and recognition on both a local and national scale.



[WWW.THEHUBBICYCLECOMPANY.COM](http://WWW.THEHUBBICYCLECOMPANY.COM)

Full Service Bike Shop



40 WEST LOCKWOOD, WEBSTER GROVES, 314.963.0300





20 Allen Ave. Suite 130  
Webster Groves, MO 63119  
314-962-4300

*Milagro Modern Mexican,  
where Mexican food  
is a work of art!*

Locally owned by Webster Groves'  
Jason & Adam Tilford

[www.milagromodernmexican.com](http://www.milagromodernmexican.com)

# Time to Clay



Kids Summer Camps  
Check out our schedules online



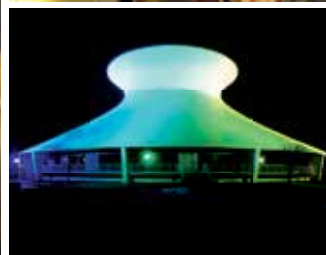
**krueger**  
Pottery Supply

314.963.0180

[www.kruegerpottery.com](http://www.kruegerpottery.com)

8153 Big Bend  
Webster Groves . MO 63119

## SAINT LOUIS SCIENCE CENTER



**We specialize  
in making  
science fun!**

Investigate and explore over 700 interactive exhibits and take in a film on one of the world's largest domed screens in our OMNIMAX® Theater. Come, play and exercise your brain! General admission is always free. Visit [slsc.org/art&air](http://slsc.org/art&air).



## Camp Creativity



*Slap on your sunblock and fill up your water bottle! You're going to Camp Creativity.*



All the joys of summer camp tied into one special section of Art&Air, Camp Creativity (formerly Studios) is a wonderland of arts and crafts, pottery, music and so much more. Venture through Camp Creativity to try out our fun booths which will offer arts-centered activities.

All kids will receive a Camp Creativity Card. When they participate to collect "creativity badges,"

they'll be awarded a special prize.

It's everything you love about summer camp without the trumpet call at 6 a.m.

Camp Creativity celebrates and unleashes the awesome creativity in kids. Kids now have their own destination for creative expression and fun at Art&Air.

### FREE ACTIVITIES

- **Art After Dark** light bulb art project (Friday evening only)
- Chinese brush painting with Ping Yan (1-4 p.m. Saturday only)
- Camp tree hanging art
- **St. Louis 250 Year** birthday cake decoration
- **Be a Famous Artist** – DaVinci, Michelangelo, Monet, Picasso and Pollack
- Go fishing in our magic pond
- **Squirt Fun** – paint-filled squirt bottles
- Archery – using soft-felt painted pads
- Sidewalk chalk creativity
- Chinese calligraphy with **Missouri Falun Dafa Association**
- **St. Louis Chess Club & World Chess Hall of Fame**
- Musical instrument **Petting Zoo** with **MusicFolk**
- **St. Louis Gymnastics Centre** demonstration & kid play
- Chain Reaction hanging paper chain, inspired by courageous 17 year-old Rachel Scott, the first student killed at Columbine High School in 1999. **Rachel's Challenge** is a collaborative project centered on kindness where our young artists will be invited to write a few kinds words or wishes on paper loops attached to a giant chain, sending off a "chain reaction" of compassion and justice in the community.
- Open creative painting on our famous two-sided white mural


### PAID OR DONATION-REQUESTED ACTIVITIES

- **Yucandu Art Studio** – delightful and creative hands-on arts & crafts including Gelli Mono-Printing, Painted Paper Maché Animals and Sparkling Glitter Projects
- **Krueger Pottery** - FREE lessons on the potter's wheel for kids and FREE clay to pinch, roll and sculpt all weekend. Small fee only if you decide to get your piece fired.
- The art and fun of face painting by master **Carol Brooks**
- Henna body art with **Mary Mac Creations** and **Rose McClinton**
- Magic as art with master magician **Jason Stack**

*Our Valued Partners*







*Creating  
Fine Art  
Since 1946*

**Paramount  
Jewelers**

7348 Manchester Ave.  
~ Maplewood ~  
314-645-1122  
paramountjewelers.com



# BRIGHTEN THE HEART OF YOUR HOME

WE'RE LEADING LED LIGHTING INTO THE FUTURE

(Pictured above)

**HALO™**  
Undercabinet  
HJ20 LED



**IRIS™**  
LED Downlight  
P3LED09



Cooper Lighting is at the forefront of the lighting industry, setting an unmatched standard for innovation and reliability.

Learn how these innovations will transform spaces into dynamic environments by contacting **Lighting Associates** at (314) 531-3500 or by email at [ddrake@laiweb.net](mailto:ddrake@laiweb.net) or [jfrey@laiweb.net](mailto:jfrey@laiweb.net).

CONNECT WITH US ON FACEBOOK, TWITTER + INSTAGRAM ::



f :: LIGHTING ASSOCIATES, INC.

twitter :: LAI\_STL

instagram :: LAI\_STL



**COOPER** Lighting  
Innovation you can rely on™

**GRAFICA**

7884 Big Bend Blvd  
(314) 961-4020  
[www.graficafinearts.com](http://www.graficafinearts.com)

presents "*Opera Visions*" by Marilynne Bradley  
Friday, May 30, thru Sunday, June 29



**The Magic Flute**

Purchase originals and prints of each of this season's 4 operas at GRAFICA and at the Opera Theatre of St. Louis boutique  
see Marilynne at Art & Air booth #316

## Special Events

### Art After Dark

Art&Air is again collaborating with Image Technologies Corporation to create *Art After Dark*, an atmosphere of light and motion that complements the art, food and drink of the fair after hours. By day you'll notice festive sculptures among the trees and artists' booths. Come nightfall, the grove awakens with vibrant light, adding to the fun of the fair.

**So much fun,  
you'll want  
to stay the night.**



Starting at 6 p.m. Friday, enjoy *Sip & Stroll*, and come back for Artful Pairings (wine & chocolate) on Saturday starting at 6 p.m. You can explore the fine art, mingle with the artists, acquire the artwork that inspires you, then watch as the fairgrounds light up during *Art After Dark*.



**4 Continents • 8 Countries • 60 Cities • 1 University**

Webster University, founded in 1915 with its home campus based in St. Louis, Missouri, USA, is the only Tier 1, private, nonprofit university with campus locations around the world including metropolitan, military, online and corporate, as well as American-style traditional campuses in North America, Europe, Asia and Africa.

United States • Switzerland • Austria • the Netherlands • United Kingdom • China • Thailand • Ghana

**Webster**  
**UNIVERSITY**  
Be a part of what's next.

### Art on a Napkin

Put your creativity on display with Art&Air's returning *Art on a Napkin* event. We're celebrating the culinary arts with fine selections from local eateries, food trucks and ice cream shops.

Release your inner artist and create a mini masterpiece with your napkin as your canvas. Your small work will help us create one big display of artistic expression. Pin up your art at the Volunteer Check-In booth to compete for prizes awarded across several categories. Sponsored by Feast Magazine.

**FEAST**

Inspired Food Culture | Saint Louis

### A special thanks to our community partners

Emmanuel Episcopal Church, Webster Groves School District, City Of Webster Groves, Holy Redeemer Church, Webster University, Nerinx Hall and all the generous neighbors and supporters of WCAF and Art&Air.



**More than 40% of students participate in the theater program at Crossroads.**

Be an actor. Be a scholar athlete.  
Be a research scientist. Be a chess master.  
Be an artist. Be a success in college.  
Be someone who makes a difference in the world.

**BE IT ALL. BE YOURSELF!**

To schedule a visit,  
call 314-367-8101 or visit  
[crossroadscollegeprep.org](http://crossroadscollegeprep.org)



**CROSSROADS**  
**COLLEGE PREP**



## Message from the Executive Director

Welcome to Art&Air!

We are all about the art! Some of the nation's best artists have come to Webster Groves to offer their unique talents to you. Art&Air is a juried fair. That means knowledgeable judges look at the work of nearly 300 applicants and invite only the best artists. It takes a weekend to decide!



Talk to our artists. Find out what inspires them. Find something special for your home or office. When you invest in art, you invest in joy and creativity. What other purchase lets you do that?

There's great music and food here, too, all brought to you by the Webster Community Arts Foundation. More than 350 volunteers work all year to craft this wonderful fair. We are so glad you are here.

"THANK YOU" to the artists who come to inspire us, to the sponsors and donors who support us, and to volunteers who keep it running, and the art patrons who see the value in original art.

And don't forget: Great art should match your soul. It doesn't have to match your sofa!

Enjoy the fair!

**Jeane Vogel**  
Executive Director

## Message from the Mayor

Welcome to Webster Groves, recognized as a Creative Community of Missouri by the Missouri Arts Council in 2013. Art&Air is celebrating its 11th year as one of the region's best arts festivals with juried artists from around the country, fabulous music, great food, art studio activities for the family and more.



While you are here, explore and enjoy the amenities of our wonderful, graceful and creative community. Take a walk and see the lovely neighborhoods, homes and gardens. Visit our unique and friendly stores and restaurants. Relax under a park tree. Take in the ambiance of our wonderful new sculpture park.

See you at Art&Air as we celebrate its 11th year!

**Gerry Welch - Mayor**

**Weber's**  
Front Row  
**NEIGHBORHOOD GRILL & PUB**

**JUST A SHORT STROLL FROM ART & AIR**

LOCKWOOD ——— BIG BEND

**8169 Big Bend Blvd.**  
**Webster Groves**  
314.961.4500  
www.webersfrontrow.com

**Blaes Architects**

Michael Blaes, AIA at Tuxedo Park Station  
www.blaesdesign.com 314-968-9202

**CONSOLIDATED**  
Design & Construction Group  
2721 Sutton Boulevard  
St. Louis, MO 63143  
ItsWhereLifeHappens.com  
314.647.9077

*"Quality and design second to none! When friends still rave years later about all the unique details – from rounded corners to a tray ceiling – and beg to have all the parties at our house, you know it's something special... it isn't a finished lower level... it's the heart of our home! Thanks for bringing it to life!!!" ~ Jerry and Doreen Brueckmann*

**25**

Life is a **FEAST**  
Inspired Food Culture | Saint Louis

Pick up **FEAST** every month in over 700 locations throughout the St. Louis region.

**feastSTL.com**

PHOTOGRAPHY BY CARMEN TROESSER

## Parking at Art&Air

*Look for the Art&Air parking signs!*

**On-Street Parking will be available on Lockwood and Bompert along the fairgrounds with some spaces for disabled parking.**



Our community partners are happy to provide free parking for the weekend of the Fair... All within a few blocks walking distance to Art&Air.

Please be respectful of our community partners and neighbors by not parking on any grassy areas, in lots not marked as open to fair-goers or on any street posted as resident parking only.

**Parking available also at:**

- Garage at Webster University (Garden Avenue)

Need help getting your larger art to your car? We can help with that! Ask any volunteer for assistance.

## Guest Artist

Art&Air is honored to host nationally recognized artist Cbabi Bayoc in the Community Tent on Sunday from 1-4 p.m. Cbabi is known for his “365 Days with Dad” project that honors “black fathers who are present for their children.” He will be demonstrating his painting.

## Community Artists Exhibit

Be sure to check out local artists who will be exhibiting in the Community Artists tent.

## Emerging Artists Exhibit

### Avery Elementary

Brooklyn Hoskins-Button, Eva Henry, Lauren Kelley, Olivia King, Savannah Haney, Lily Petersen, Amelia Dorsey, Bridget Moehlman, Justice Fitzgerald, Sarah Sammon

### Bristol Elementary

McKenna Williams, Sarah Veldhuizen, Emma Forsee, Francesca Westendorf, Emmett Barrett, Carissa Castro, Patrick Brennan, Audrey Barker, Adelia Lewis, Alex Beckerle, Greta Schoon, Alison Merriman, Theo Melton, Ella Brenner

### Clark Elementary

Olivia Nennert, Eva Vognild, Michael Harleman, Lulu Thies, Eliza Drayton

### Webster Groves Computer School

Lanie Boyle, Keith Corpuz-Fisher, Gretchen Daves, Jerid Enyard, Li Hodson, Solia Simpson, Mia Simon

### Edgar Road Elementary

Tanner Davis, Ellie McAvin, Keegan Irish, Kelsey Lehmann, Emily Suchanek, Tigi Tetley

### Hixson Middle School

Ben Ortinau, Gavin Kendrick, Allyson Peters, Abby Eaton, Evelyn Wilke-Grimm, David Buckley, Lydia Martin, Jessica Powell, Marie Bardelmeier, Leor Shomroni, Nicolette Schnettgoecke, Hannah Barnes, Chloe Darst, Emily Kemp

### Hudson Elementary

Adrianna Williams, Citlali Escamilla, Annemarie Sweeney, Chrystal Nguyen, Kristyn Morgenthaller

### Steger 6th Grade Center

Gwen Acar, Chloe Bischoff, Elise Bruns, Emme Carpenter, Cecelia Eldridge, Cloe Ewing, Preston Haney, Elise Keller, Claire Kellick, Rosie Lopolito, Katka Trachtova, Alex Smith, Morgan Spencer, Alex Wiedemann



## Working with Electricity is an ART...

LIGHTING DESIGN  
COST EFFECTIVE  
DECORATIVE LED LIGHTING

— **Fielder** —  
**Electrical Services, Inc.**

314-966-3388

fielderelectricalservices.com

*If it can be wired, we can wire it.*



- In-house paintless dent removal
- Environmentally friendly
- Family owned and operated

### SHUR-WAY AUTO BODY

3540 Greenwood • Maplewood

314.645.5540 • www.shur-wayautobody.com





**Creatively**  
helping our clients  
**navigate** their  
real estate **dreams**

the **joel svoboda** team  
Experienced. Innovative. Personalized.

**314.537.1971**

601 E. Lockwood Avenue  
Webster Groves  
facebook.com/joelsvobodarealtor  
**joel svoboda** team leader  
**jenn brenner** buyer specialist



**circa PROPERTIES**  
THE ART OF PARTNERSHIP



## FAITH ACADEMY OF MONTESSORI

WHERE YOUR CHILD CAN GROW



Faith Academy provides a peaceful, nurturing Montessori environment, where children are respected as individuals and can learn at their own pace. Under the loving direction of our experienced educators, children develop a positive self image and a passion for learning that lasts a lifetime.

### SUMMER CAMP • FULL & PART TIME

Educating Children ages 2 1/2 – 6 since 1982

44 N. GORE IN WEBSTER GROVES • 314-961-1411  
faithacademyofmontessori.com

For residential  
or commercial  
hardwood flooring  
insist on the  
finest materials  
and installation.

♦♦♦♦

Missouri Floor Co.  
Since 1910

**CALL US FOR REFINISHING WORK TOO!**

*Providing Luxurious Floors  
for Over 100 Years*

SPECIALIST IN FLOORING SINCE 1910

**MISSOURI FLOOR COMPANY**

**(314) 432-2260**

www.missourifloor.com

## Sponsors & Donors

### GOLD

Missouri Arts Council

### SILVER

Eden Seminary  
Feast Magazine  
Union Pacific Foundation  
Webster University

### BRONZE

AnsaRing  
Blaes Architects  
City of Webster Groves  
Commerce Bank  
First Choice Courier  
Image Technologies  
Kuhn Construction  
Old Orchard Gallery  
Robust  
Switch  
Traube Tent Company  
Webster Groves Subaru  
Webster-Kirkwood Times  
Yucandu Art Studio

### COPPER

Ameren Missouri  
Ann Ibur  
Arts in Motion  
Chess Club and Scholastic Center  
Cyrano's  
Edge of Webster  
Embroider the Occasion  
Goddard School - Rock Hill  
Insight Theatre Company  
Krueger Pottery  
Mac Do-It-Best Hardware  
Mary Mac Creations/Rose  
McClinton  
MO Falun Dafa Association  
Music Folk  
Nerinx Hall High School  
St. Louis Chess Club & World  
Chess Hall of Fame  
The St. Louis Gymnastics Centre  
Waste Management  
Webster Groves School District

Many thanks to all of the generous individual donors who have supported Art&Air and WCAF for the past 11 years! We look forward to the future and are grateful for the continued community support. Join us and donate now at wcaf.org.

### DONOR

Cbabi Bayoc  
Breadsmith  
Cyrano's  
Dewey's Pizza  
Einstein's Kirkwood  
Einstein's Webster Groves  
Face painting by Carol Brooks  
Freddie's Market  
Nicholas Gates  
Eileen Kinsella  
Lubeley's  
Old Orchard Taxing District  
Lily Pappas  
Racanelli's  
Rolling Ridge  
St. Louis Public Radio  
SanSai  
Jason Stack  
Starbuck's  
The Grove Deli  
Trader Joe's  
Valenti's Catering

Weber's Front Row  
Ping Yan

### 2014 ARTS PARTNERS

COCA  
Community Music School  
Contemporary Art Museum  
Dance St. Louis  
Missouri Chamber Music Festival  
Mobile Attic  
Nine Network  
Opera Theatre St. Louis  
Pulitzer Foundation for the Arts  
Repertory Theater of St. Louis  
SanSai  
Scottish Partnership for Arts & Education  
Sheldon Concert Hall  
St. Louis Artists' Guild  
Starbucks  
The Black Rep  
Webster Groves Historical Society  
Webster Groves Public Library  
Webster Rock Hill Ministries



**Missouri Arts Council**  
The State of the Arts

*Eden*  
THEOLOGICAL  
SEMINARY

**FEAST**  
Inspired Food Culture | Saint Louis



BUILDING AMERICA®

**Webster UNIVERSITY**

**YUCANDU** LLC  
ART STUDIO

**KUHN CONSTRUCTION**  
www.kuhnconst.com

**switch** liberate your brand

**Webster-Kirkwood TIMES**

**robust**  
WINE SHOPPE CAFE

**WEBSTER GROVES**

**1st choice**  
courier and distribution

**Ameren MISSOURI**



**WEBSTER GROVES SUBARU**

**TRAUBE**  
TENTS AND STRUCTURES

**Commerce Bank**  
Member FDIC

**Blaes Architects**

**AnsaRing**

**The Goddard School**  
FOR EARLY CHILDHOOD DEVELOPMENT

**FALUN Dafa**  
Truthfulness • Benevolence • Forbearance

**WM**  
WASTE MANAGEMENT  
Think Green.

**MAC Best**

**music folk**  
The Area's Acoustic Shop for 30 Years

**ARTS in motion**  
SCHOOL OF DANCE & MOVEMENT

**WORLD CHESS HALL OF FAME**

**insight**  
theatre company



**WEBSTER GROVES SCHOOL DISTRICT FOUNDATION**

**Rolling Ridge Nursery**

**Cyrano's**  
Cafe • Coffee • Desserts



**THE Edge**  
of Webster

**CHESS CLUB**  
SCHOLASTIC CENTER

**Embroider the Occasion**

**ST. LOUIS Gym Centre**  
GYMNASTICS • MARTIAL ARTS

**NIH NERINX HALL**



**WEBSTER ROCK HILL MINISTRIES**

**LIVE THEATRE SO CLOSE YOU CAN FEEL IT**

**DANCEst.**

**nineNetwork**

**COCA**

The Pulitzer Foundation for the Arts





## Experience Summer with The College School



**Adventure Day Camps**  
for ages 4-11

A variety of multi-day  
**Expeditions** for ages 9-15

7825 Big Bend Blvd. • Webster Groves, MO 63119  
314-962-9355 • [www.thecollegeschool.org](http://www.thecollegeschool.org)  
[summercamp@thecollegeschool.org](mailto:summercamp@thecollegeschool.org)



NEW OFFICE  
LOCATION

— *Webster Groves* —

DESOTO BUILDING — 601 E. LOCKWOOD AVE. 63119

We know St. Louis real estate inside and out. The homes.  
The neighborhoods. The difference between a fair price and one  
that's far-fetched. We are skilled negotiators. And we'll represent  
your interests from the very first handshake on. Honestly and  
with integrity. It's an approach we call The Art of Partnership.  
And it's what makes Circa agents different.

**circa PROPERTIES**  
THE ART OF PARTNERSHIP

314-352-5200 | [CIRCASTL.COM](http://CIRCASTL.COM)

## Come Visit Our All New Showroom!

### Webster Groves 42 years as a Locally Owned Subaru Dealer



**NEW  
2014 OUTBACK  
2.5i**



Model EDB-01

**0.0%**  
APR AVAILABLE

**FROM \$23,865**



\*SPECIAL FINANCING AVAILABLE TO QUALIFIED BUYERS WITH APPROVED CREDIT.  
MUST FINANCE THROUGH SMFC. MPG BASED ON EPA EST. MILEAGE.  
SEE DEALER FOR DETAILS.



**Big Bend @ Murdoch**  
314-968-5167

[www.wgsis.com](http://www.wgsis.com)



## 2013 Art&Air Award Winners



**Best of Show:**  
Willow Block



**Glass:**  
Leslie Friedman



**Jewelry:**  
Jerry Scavezze



**Photography:**  
Mark Hurd



**Fiber:**  
Gwen Bennett



**Painting:**  
M. Shawn Cornell



**Works on Paper:**  
Gary Bachers



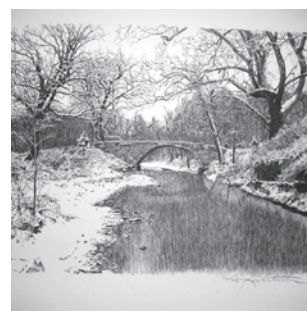
**Mixed Media:**  
Jan Byron



**Clay/Ceramics:**  
Jimmy Liu



**Wood/Metal/Stone**  
Mary Boesdorfer



**Best Local Artist:**  
Gary Gackstatter



LOCALLY OWNED IN OUR 2ND GENERATION

Senior care  
as individual as  
your loved one.

Our personalized care is as individual as your loved one, from 30-Minute Quickvisits™ to 24/7 dementia care, tailored to your schedule and budget. Visit our website to learn more.

CALL US TODAY  
To Schedule Your Free  
RN Assessment

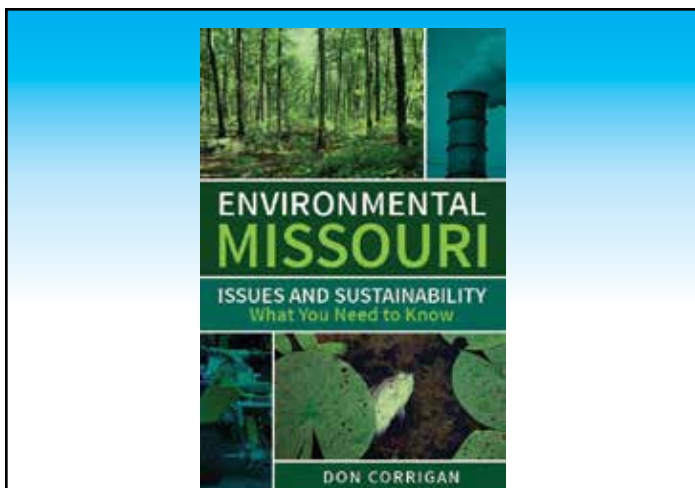
MID COUNTY  
CLAYTON/LADUE  
WEST COUNTY  
SOUTH COUNTY

SINCE 1987  
**SHC**  
SENIORS HOME CARE

314.962.2666  
314.863.2667  
636.225.2600  
314.894.2666

**SENIORSHOMECARE.COM**





by Don Corrigan

Webster University Professor and Editor-in-Chief

**Webster-Kirkwood**  
**TIMES**

For more information contact the author at  
corrigan@timesnewspapers.com or 314-968-2699

See Don talk about his book at Schlafly's in Maplewood  
at the Climate Reality - St. Louis Meetup, 7 p.m., June 22,  
in the Crown Room



430 W. SWON AVE.  
Webster Groves, Missouri

Once the country home for Ralston Purina, with  
additions designed by Randall Comfort, this  
5 bedroom 5 bath home is one to remember.

BEDROOMS ..... 5  
BATHS ..... 5  
CONTACT ..... Dorcas Dunlop  
PHONE ..... 314-304-3117  
WEB ..... www.dorcasdunlop.com  
EMAIL ... dorcas@dorcasdunlop.com

- There's a 4-season room, 3 fireplaces plus a wraparound deck.  
The kitchen is a culinary masterpiece with professional appliances.



420 OAKWOOD AVENUE  
Webster Groves, Missouri

This revered estate is a seamless blend of old world  
charm and modern amenities with timeless classic  
elegance including a salt water in-ground pool.

BEDROOMS ..... 5  
BATHS ..... 5  
CONTACT ..... Dorcas Dunlop  
PHONE ..... 314-304-3117  
WEB ..... www.dorcasdunlop.com  
EMAIL ... dorcas@dorcasdunlop.com

- Located in the historic Webster Park neighborhood with a complete  
renovation offering an enormous 6,000 sq.ft. of living space plus studio.



19 BERRY WOOD DR.  
Glendale, Missouri

Spectacular, completely renovated 1.5 story is ideally  
situated in a peaceful, family-friendly area of  
charming homes, gardens and quiet residential streets.

BEDROOMS ..... 3  
BATHS ..... 2  
CONTACT ..... Dorcas Dunlop  
PHONE ..... 314-304-3117  
WEB ..... www.dorcasdunlop.com  
EMAIL ... dorcas@dorcasdunlop.com

- Three levels of living space, with new kitchen/breakfast room, living  
room, family room, office/study, bath and bedroom on the main floor.



Advantage  
REALTORS®



Dorcas Dunlop  
314-304-3117  
www.dorcasdunlop.com  
dorcas@dorcasdunlop.com



## Food Vendors

# FEAST

Inspired Food Culture | Saint Louis

FEAST Magazine is the official Culinary Arts sponsor of Art&Air 2014!

The following hand-picked vendors are ready to 'wow us' with delicious food and drink offerings throughout the weekend.



**Completely Sauced**  
completelysauced.com  
314-221-9310



**Lulu's Local Eatery**  
luluslocaleatery.com  
314-357-7717



**Milagro Modern Mexican**  
milagromodernmexican.com  
314-962-4300



**Naked Bacon**  
nakedbaconco.com  
314-717-1176



**Russo's Catering**  
russosgourmet.com  
314-427-4955



**Serendipity**  
serendipity-icecream.com  
314-962-2700



**Straub's Smokehouse BBQ**  
straubs.com  
314-962-0169



**Zia's**  
zias.com  
314-776-0020

## Specialty Vendors



**Renewal by Andersen**  
renewalbyandersen.com  
800-585-1967



**LeafFilter**  
leaffilter.com  
(800) 290-6106



**Webster Groves Subaru**  
wgsis.com  
314-968-5167



**Bath Fitter**  
bathfitterstlouis.com  
877-851-0024



**True Home Value**  
truehomevalue.com



**Pinot's Palette**  
pinotpalette.com/chesterfield  
636-778-2111



**Welk Resorts**  
welkresorts.com/branson  
417-336-3575



**NY Times**  
nytimes.com



**Valenti Interiors**  
314-220-6887



**Total Access Urgent Care**  
totalaccessurgentcare.com  
314-961-2255



**Webster Groves Public Schools**  
webster.k12.mo.us  
314-961-1233





**Friends.  
Family.  
Community.**

**James J. Carlton,  
Agent**

34 N. Gore Ave., Ste 104  
Webster Groves  
314-961-4800  
james.carlton.uyl4@statefarm.com  
www.carltoninsurance.net

**We're all in this  
together.**

State Farm® has a long tradition of being there. That's one reason why I'm proud to support Webster Groves High School, Webster Groves Rotary Club, and the Webster Groves Chamber of Commerce.

**Get to a better State®.**



State Farm, Home Office, Bloomington, IL

**Here**



facebook.com/WebsterKirkwoodTimes



twitter.com/WKTimes

**There**

**Everywhere**



WebsterKirkwoodTimes.com/mobile



websterkirkwoodtimes.com



**Even for when  
you have time to  
relax.**

**Webster-Kirkwood  
TIMES**

314-968-2699



*"Join the Tribe & go with Streib"*

**SERVICE • DESIGN • INNOVATION • ENERGY SOLUTIONS**

**Complete electrical, home theater and security services.**

**314-487-7474 | STREIBCO.COM**



We live here, we work  
here, we raise our  
families here...

# Proud

...to be your neighbor  
and part of the  
Webster Groves  
community for

# 36 years



**Webster-Kirkwood**  
**TIMES**  
 Your Hometown Newspaper Since 1978  
 May 16 - 22, 2014 Locally Owned & Operated

TWO SECTIONS  
 Vol. 36, No. 45  
 A Home Makeover in Shreveport page 1B  
 Popularity Of St. Louis Bridge Center Is Among Tops In The Nation pages 16A-17A

## Sculpture GARDEN

Webster Groves welcomes opening of new, whimsical half-acre public park

Webster Groves artist Catharine Magel next to her mosaic flower and bird entitled, "Influences." Magel said at last week's Sculpture Garden opening that it was an honor to have been chosen to create a sculpture for her own community.

photo by Bill Burckhalter

**by Mary Shapiro**

Rain clouds parted long enough on Thursday evening, May 8, to allow a dry opening and dedication of the Webster Groves Sculpture Garden.

About 100 people turned out for the opening of the city's 18th park, located on two wedges of land at the intersection of Kirkham and Gore avenues.

Gore bisects the two tracts and the half-acre garden forms an entry point for those traveling into Old Webster.

Art displayed includes two works by the late Ernest Trova: "Abstract Variation No. 1" and "T-Gee #7." Both pieces are on long-term loan from Laureiser Sculpture Park.

Other pieces include a mosaic flower and bird sculpture called "Influences" by Catharine Magel; a metal sculpture called "Old School" by Ryan Lewis; and several sculpted eggs called "Beginnings" by Carol Fleming.

All works of art placed along cont. p. 8A

# Webster-Kirkwood TIMES

122 W. Lockwood Ave.  
Webster Groves

314.968.2699

www.websterkirkwoodtimes.com



## SHAKESPEARE FESTIVAL in Forest Park

Kirkwood alum  
James Hesse to  
take stage in pair  
of productions

**by Linda Jarrett**

Few events are so satisfying as watching a local performer reaching a goal. Kirkwood High School graduate James Hesse will be doing just that when he plays in Henry IV and Henry V at the Shakespeare Festival this

The son of Dave Hesse and Lisa Stojewski, James Hesse was born and raised in Kirkwood. He was bit by the acting bug when he took part in a play at Tiltman Elementary School.

"My parents told me I was the only person on stage that they could understand," he said. "I thought, 'Oh, this is fun! I want to do this.'"

He kept performing throughout his time at Nipkow Middle School and Kirkwood High School, but decided he wanted to be a math teacher.

At right, James Hesse will play multiple roles in productions of Henry IV and Henry V.



photo by Diana Lindsey





THE WEBSTER-KIRKWOOD TIMES PRESENTS

# THE 14TH ANNUAL OLD WEBSTER JAZZ & BLUES FESTIVAL

***Calling all  
Musicians!***

Compete for the chance  
to open the festival from  
the Allen Avenue Stage  
when you enter in the  
Webster's Got Talent  
competition.

*Save the Date*

**SATURDAY, SEPT. 20, 2014  
NOON TO 11 PM**

**[www.oldwebsterjazzfestival.com](http://www.oldwebsterjazzfestival.com)**